

Local Flu Levels Remain Elevated

Influenza activity in Los Angeles County (LAC) remains high with sentinel labs reporting 25% positive for flu, although this is comparable to this time last season (Figure 1). Four additional deaths were reported for week 2 bringing the total number of influenza-associated deaths to eleven (Table 1). All influenza-associated deaths reported this season have been in adults who also had underlying medical conditions. Influenza A H3 continues to be the dominant strain with lower levels of A H1 and B also circulating. Nationwide, the Centers for Disease Control and Prevention (CDC) reports high levels of flu across the country (Figure 3). During surveillance week 2, widespread activity was reported for California as well as the majority of states.

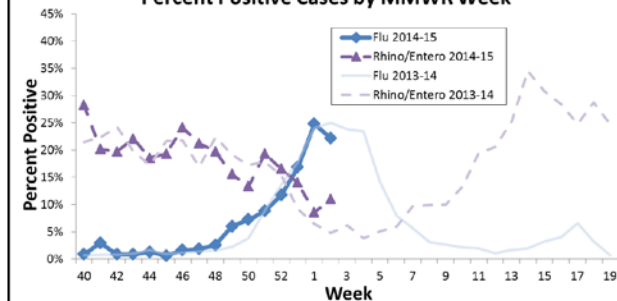
Table 1. LA County Surveillance Summary

	2014-2015		2013-2014	
	Week 2	YTD [†]	Week 2	YTD
Percent Positive Flu Tests	21.6%	8.5%	25.0%	10.1%
Percent Flu A/B	96/4	93/7	98/2	98/2
Community Respiratory Outbreaks	0	2	0	3
Pediatric Flu Deaths ^{††}	0	0	1	2
Adult Flu Deaths	4	11	9	21

[†]The influenza surveillance year starts September 1

^{††}Confirmed influenza death is defined by a positive lab test, ILI symptoms, and clear progression from illness to death

**Figure 1. Influenza and Rhino/Enteroviruses, LAC 2013-2015
Percent Positive Cases by MMWR Week**



Influenza Prevention and Control in LAC Skilled Nursing Facilities

The Los Angeles County Department of Public Health (LACDPH) Acute Communicable Disease Control Program (ACDC) now has a Skilled Nursing Facilities (SNF) Outreach Program. This program was developed to support and assist SNFs prevent infections, strengthen outbreak detection and response and address other acute communicable disease issues. The first goal of the program is to assist SNFs implement the Health Officer Order to vaccinate all healthcare workers against influenza. A toolkit for influenza vaccination programs in SNFs is available on the LACDPH ACDC website at www.ph.lacounty.gov/acd/SNFToolKit.htm. In addition, the California Department of Public Health recently notified long-term health care facilities to be aware of influenza outbreaks and remind them to take precautions to prevent and control influenza. The full notice can be found here: www.cdph.ca.gov/certlic/facilities/Documents/LNC-AFL-15-02.pdf.

Figure 2. Percent Positive Visits to Emergency Departments for ILI, LAC 2009-2015

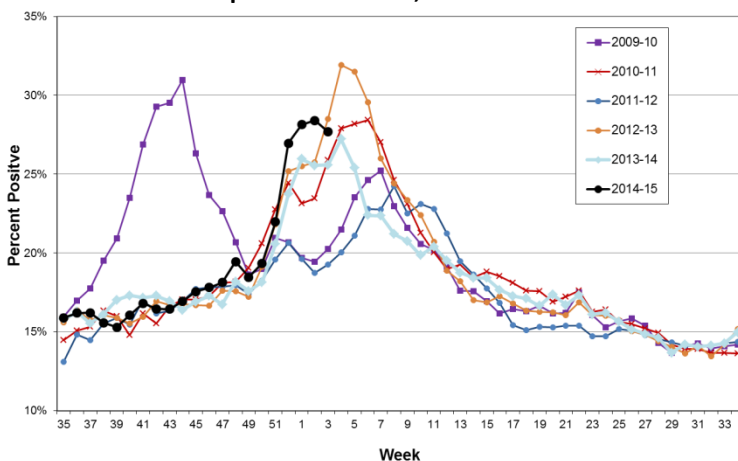
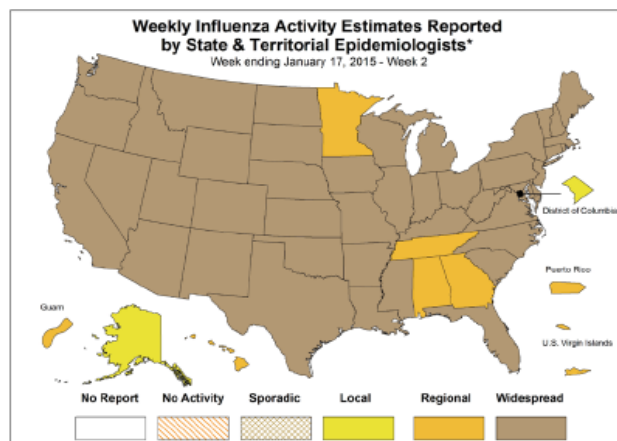


Figure 3. CDC Weekly US Map: Influenza Summary Update



* This map indicates geographic spread & does not measure the severity of influenza activity