

Influenza Activity Slowing Down

Multiple indicators show influenza activity in Los Angeles County (LAC) continues to decline as seen over the past few weeks (Figure 1). Compared to previous seasons, flu activity in LAC began earlier than usual and peaked earlier as well (Figure 2). To date, LAC has confirmed 72 influenza-associated deaths for the 2013-14 season which surpassed the total number of deaths for the entire 2012-13 influenza season (70 total) [2012-13 Season Summary](#). Type A 2009 H1N1 remains the dominant strain, however A H3 and B are also circulating. The CDC reports varying levels of geographic spread of influenza across the nation with decreasing activity in most areas, including CA which has been downgraded from widespread to regional.

Table 1. LA County Surveillance Summary 2013-2014

LA County Surveillance Summary	Week 8 2/16/14-2/22/14	2013-14 YTD (9/1/13-Present)
Positive Flu Tests/Total Tests† (Percent Positive Flu Tests)	98/1529 (6.4%)	3574/27,933 (12.8%)
Percent Flu A/B	85/15	97/3
Community Respiratory Outbreaks	0	6
Influenza confirmed outbreaks††	0	2
Adult Flu Deaths, confirmed†††	4	70
Pediatric Flu Deaths	0	2
Total	4	72

†Sentinel sites (9 participating) ††Associated with at least one positive influenza lab test
†††Confirmed influenza death is defined by a positive lab test, compatible symptoms, and clear progression from illness to death
Note: LA County tracks flu deaths of all ages, CA State reports on those <65 years only

**Figure 1. Respiratory Viruses, LA County 2013-2014
Percent Positive Cases by MMWR Week**

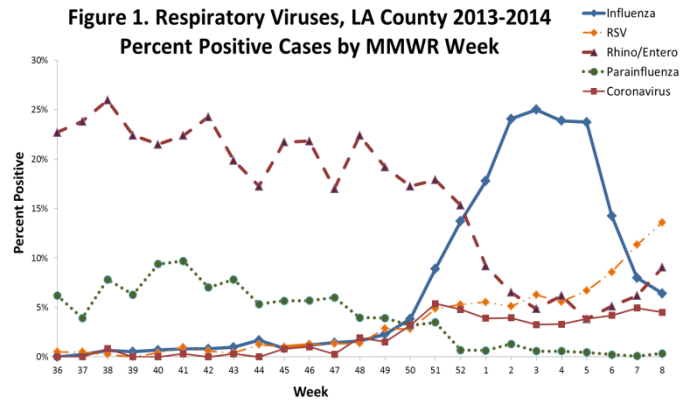
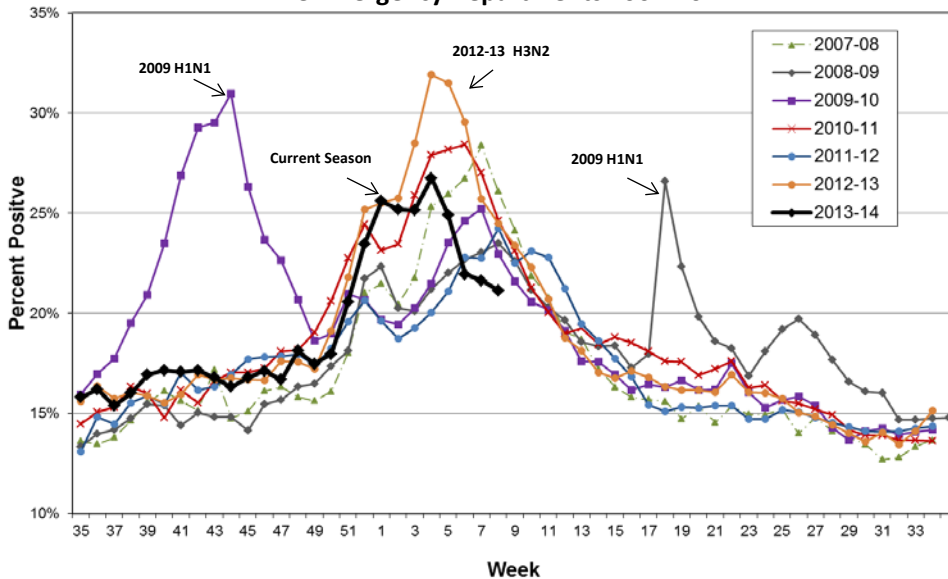


Figure 2. Percent Positive Influenza-Like-Illness in Participating LAC Emergency Departments 2007-2014



Influenza-associated death of a pregnant woman

Last week, LAC confirmed a flu death of a pregnant woman and her unborn baby (1). Pregnant and post partum women are at increased risk for severe illness and serious complications from flu infection. Although flu activity has been on the decline locally, it is still widespread and will continue at least through March. The flu vaccine is recommended for everyone, six months of age or older, including pregnant women at any stage of their pregnancy (2).

1. [Confirmed Flu Death of Pregnant Woman in LA County](#)
2. [CDC letter promoting flu vaccination of pregnant women](#)