



INFLUENZA WATCH LOS ANGELES COUNTY

Los Angeles County (LAC) The total number of positive flu tests and the percent of flu tests that tested positive have continued to decrease however they are still slightly elevated over levels normally expected during this time of year (Figure 1). One new ILI (influenza-like illness) outbreak in a nursing home was reported during weeks 51 and 52 (Table 1); due to the closure of schools during the holiday season we expected a decrease in outbreak reporting. Respiratory season is now beginning. Reports of influenza B and RSV are increasing (Figure 1) and we anticipate another increase in Pandemic H1N1 (pH1N1). Other respiratory diseases have begun to circulate as we have had reports of parainfluenza 1 and 3, human metapneumovirus, adenovirus and enterovirus.

Table 1: Surveillance System Overview

SURVEILLANCE SYSTEM*	Weeks 51 & 52	2009-2010 YTD
Percent Positive Influenza Tests [±]	3.8	16.2
Percent Positive RSV Tests [‡]	7.8	2.1
Percent Flu A / Flu B [±]	95 / 5	99.6 / 0.4
Severe Pediatric Influenza Cases [†]	0 (0)	95 (9)
Respiratory Outbreaks	1	353
Influenza Deaths	1	73

*See <http://apublichealth.org/acd/flu.htm> for a description of surveillance methods. 2009-2010 surveillance started on 8/30/09 (week 35) and ends May 22, 2010 (week 20)

± Sentinel sites (9 participating facilities in weeks 51 & 52)

‡ Sentinel sites (4 participating facilities in weeks 51 & 52)

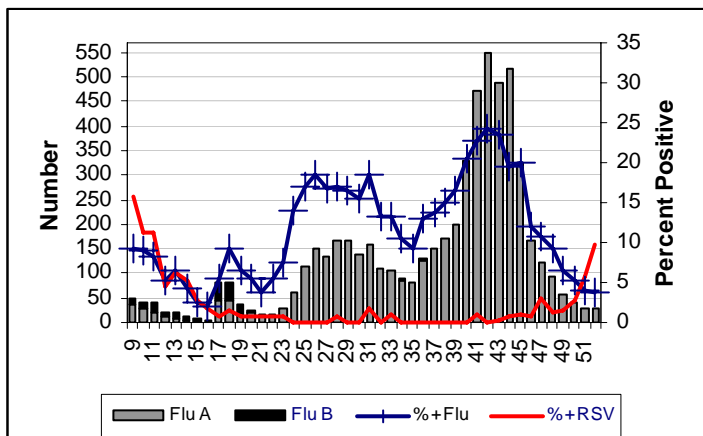
†The number of deaths is indicated by the parenthesis.

California During weeks 51 and 52 influenza activity in California was down-graded to **regional**, the first time since early September. <http://www.cdph.ca.gov/PROGRAMS/VRDL/Pages/CaliforniaInfluenzaSurveillanceProject.aspx>

United States Influenza activity decreased slightly in the US during weeks 51 and 52 (Dec 20-Jan 2). In week 52, only one state reported widespread activity, 12 states reported regional activity, 17 states reported local activity, and 19 states reported sporadic activity. All subtyped influenza A viruses reported to CDC in week 52 were pH1N1 viruses. www.cdc.gov/flu/weekly

In the News A December 31st article in *The New England Journal of Medicine* describes transmission pH1N1 within households. Transmission dynamics from 216 index patients within 216 households containing 600 household contacts were investigated. In 72% (156) of households, no household contacts developed respiratory illness and only 78 of 600 (13%) household contacts developed an acute respiratory illness. Household contacts aged 18 years or younger were twice as susceptible as those aged 19 to 50 years while contacts over 50 years were least susceptible. Transmission to contacts was observed to occur soon after onset of symptoms in the index case with a mean time between symptom onset in index case and contact of 2.6 days. The investigators concluded transmissibility of this virus is lower than seen in previous pandemics. <http://content.nejm.org/cgi/reprint/361/27/2619.pdf>

Figure 1: Total Positive Flu and % Positive Flu by Week



*Influenza data represent testing completed in 9 facilities except in weeks 39 and 44-49 in

Figure 2: Percent of ED Visits for ILI by Week, All Ages

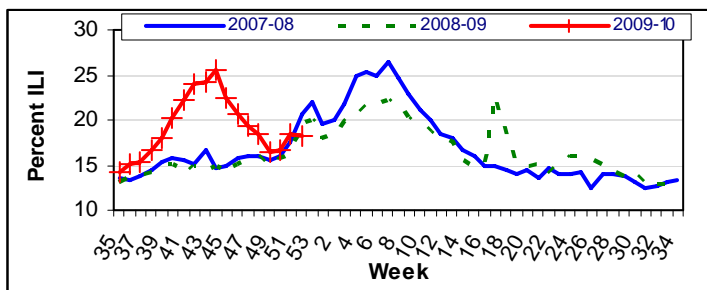


Figure 3: Percent of ED Visits for ILI by Week, 5-14 Years

