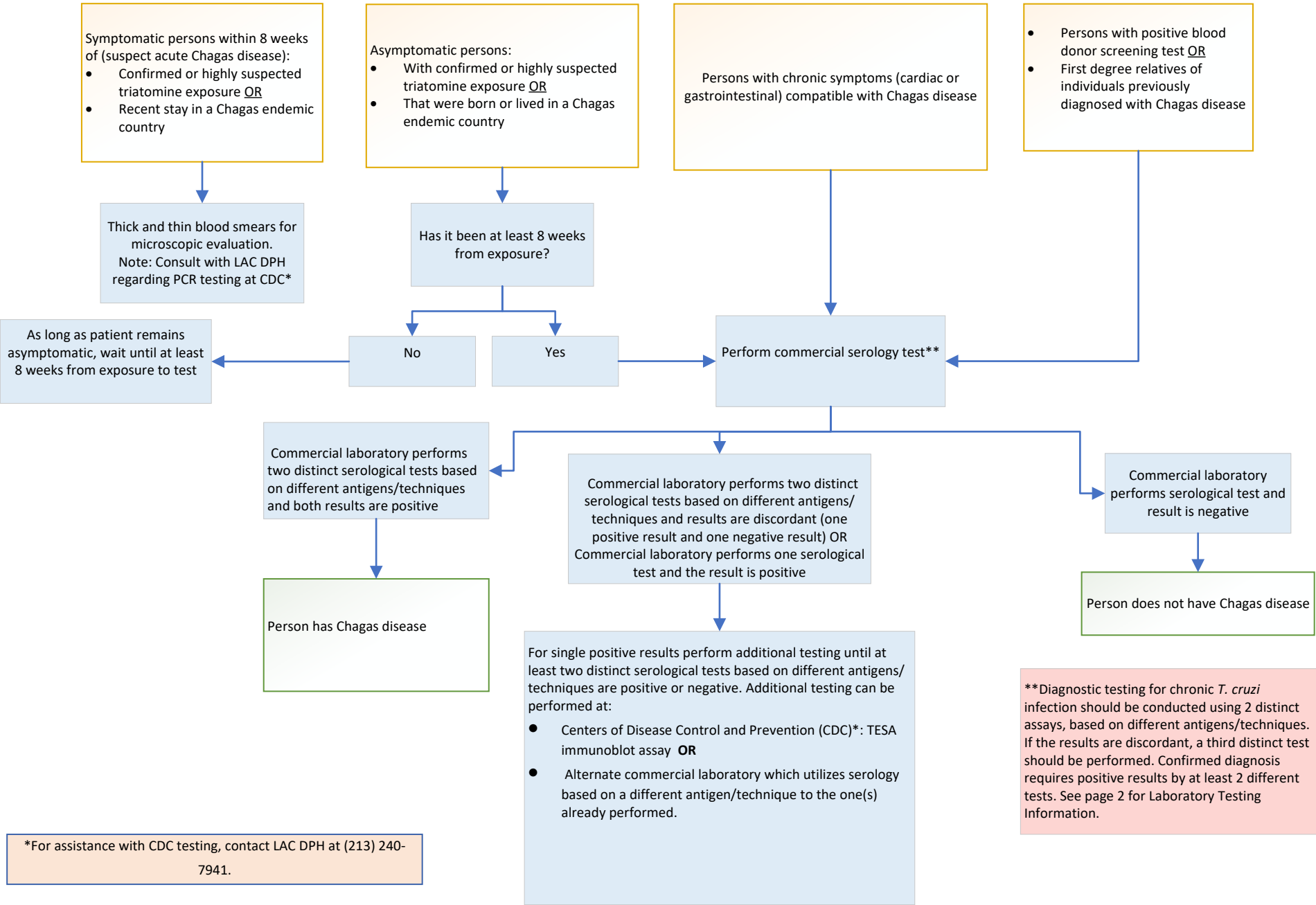
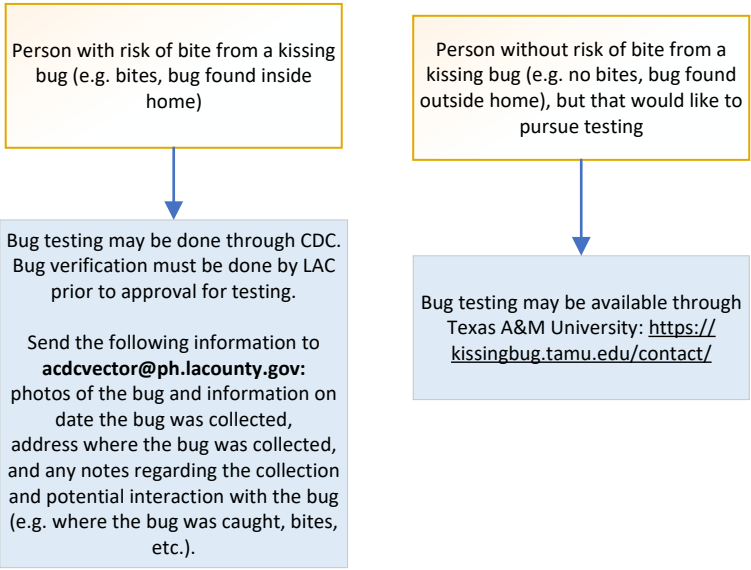


Chagas Testing Guidance in Los Angeles County

Human testing



Triatomine (kissing bug) testing



Laboratories that perform <i>Trypanosoma Cruzi</i> Testing		
Laboratory Name	Test type (s) offered	Link to test
ARUP Laboratories	Hemagen ELISA	<a href="https://ltd.aruplab.com/Tests/Pub/0051076">https://ltd.aruplab.com/Tests/Pub/0051076</a>
Centers for Disease Control	TESA IB, PCR	<a href="https://www.cdc.gov/laboratory/specimen-submission/detail.html?CDCTestCode=CDC-10458">https://www.cdc.gov/laboratory/specimen-submission/detail.html?CDCTestCode=CDC-10458</a> <a href="https://www.cdc.gov/laboratory/specimen-submission/detail.html?CDCTestCode=CDC-10475">https://www.cdc.gov/laboratory/specimen-submission/detail.html?CDCTestCode=CDC-10475</a>
Kephera Diagnostics	Wiener ELISA, TESA IB, MultiCruzi Multiplex IA	<a href="https://kephera.com/order-test/order-test-diseases/">https://kephera.com/order-test/order-test-diseases/</a>
Mayo Clinic Laboratories	Wiener ELISA, InBios RDT	<a href="https://www.mayocliniclabs.com/test-catalog/overview/615244#Clinical-and-Interpretive">https://www.mayocliniclabs.com/test-catalog/overview/615244#Clinical-and-Interpretive</a>
Quest Diagnostics	Wiener ELISA, InBios RDT	<a href="https://testdirectory.questdiagnostics.com/test/test-detail/13230/trypanosoma-cruzi-antibody-total-with-reflex-to-confirmation?cc=MASTER">https://testdirectory.questdiagnostics.com/test/test-detail/13230/trypanosoma-cruzi-antibody-total-with-reflex-to-confirmation?cc=MASTER</a>
<p>Disclaimer of Endorsement: Reference herein to any specific laboratory or test does not necessarily constitute or imply its endorsement, recommendation, or favoring by Los Angeles County Department of Public Health.</p> <p>Please check laboratory website for any updates to test changes.</p>		