

# Coronavirus Disease 2019 (COVID-19)

## Surveillance Data for Los Angeles County

Updated 5/3/2020

For additional Los Angeles County COVID-19 case data, view our COVID-19 [locations webpage](#) and our [COVID-19 surveillance dashboard](#).

### LAC DPH COVID-19 Case Characteristic Summary <sup>1,2,3</sup>

	Total Cases
<b>Laboratory Confirmed Cases in Los Angeles County*</b>	<b>24,500*</b>
<b>Median Age</b>	49
<b>Age Group</b>	
- 0 to 17	669
- 18 to 40	8,199
- 41 to 65	10,306
- over 65	5,254
- Under Investigation	72
<b>Sex</b>	
- Female	12,112
- Male	12,193
- Other	6
- Under Investigation	189
<b>Ever Hospitalized</b>	4,986
<b>Deaths</b>	1,138

<sup>1</sup> Cumulative since January 31, 2020. Data may be updated in in between reports on LAC website and/or press releases.

<sup>2</sup> Reflective of data up until 8:00 pm on 5/2/2020.

<sup>3</sup> Includes electronic laboratory reported (ELR) cases still under investigation and may be out of jurisdiction.

<sup>4</sup> Excludes cases still under investigation.

\* Excludes cases in Long Beach and Pasadena.

### COVID-19 Laboratory Test Results Submitted Electronically to LA County DPH <sup>1,2,3</sup>

	Person Positive	Person Negative	Persons Tested	% Positive Persons
<b>TOTAL</b>	22,466	133,641	163,965	14%

<sup>1</sup> Cumulative since January 31, 2020. Data may be updated in in between reports on LAC website and/or press releases.

<sup>2</sup> Reflective of data up until 8:00 pm on 5/2/2020.

<sup>3</sup> Note that the "Person Positive" number differs from the "Laboratory Confirmed Cases" at the top of this page because: (1) this laboratory test data only includes reports submitted to LA County via the electronic laboratory report (ELR) system, (2) it excludes tests that were performed early in the outbreak by the Centers for Disease Control and Prevention (CDC), and (3) ELR data may also include tests performed on patients residing in other jurisdictions. The ELR data is subject to change.

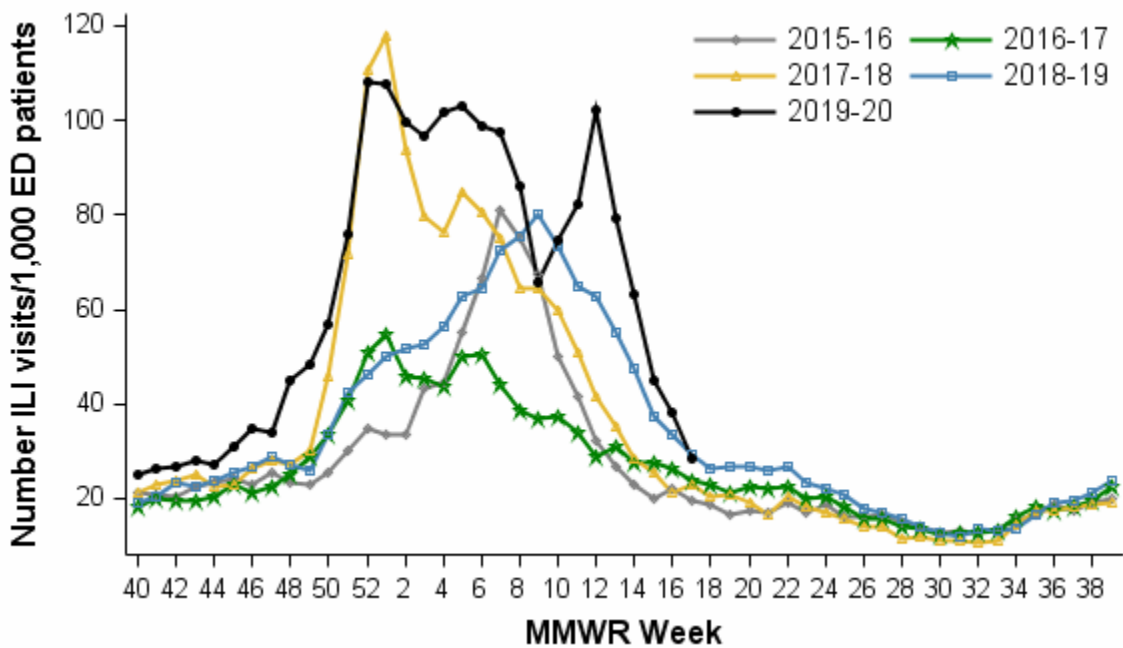
<sup>4</sup> Inconclusive or not tested results not shown but are included in total persons and specimens tested.

# Coronavirus Disease 2019 (COVID-19)

## Surveillance Data for Los Angeles County

### Los Angeles County Emergency Department Influenza-Like Illness (ILI)\* Chief Complaint Visits

Week Ending 4/27/2020 (MMWR Week 17)



\* The Los Angeles County Syndromic Surveillance Project monitors influenza-like illness (ILI) in patients presenting to a sample of emergency departments (EDs) throughout Los Angeles County. The project counts patients who mention flu, or who report having fever with sore throat and/or cough, when they first arrive in the ED.