

Ask an IP

Learning and Communication Series

Week 6 – Microbiology Office Hours

Wednesday, April 13, 2022



Acute Communicable Disease Control Program
Los Angeles County Department of Public Health





Disclosures

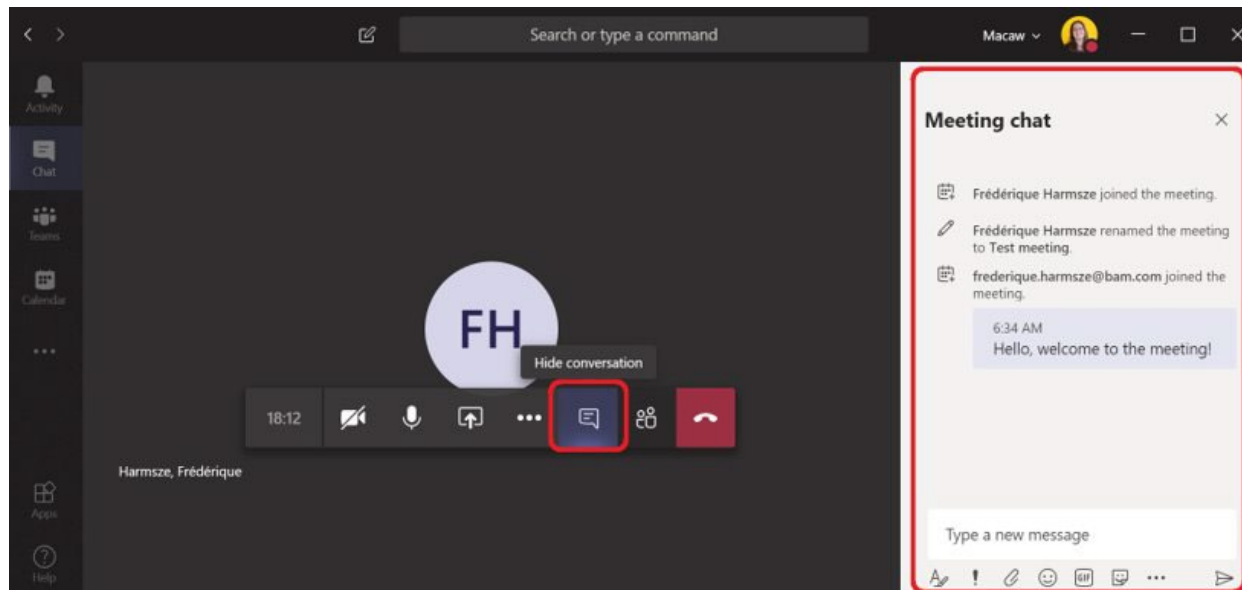
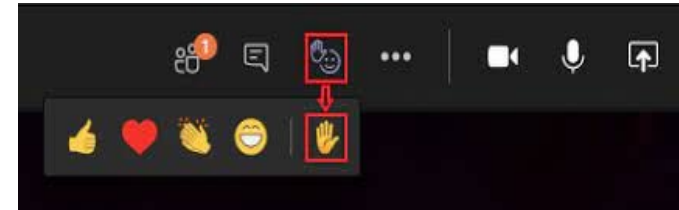
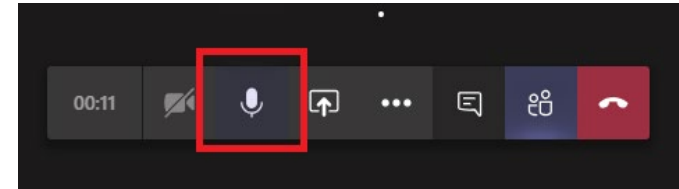
There is no commercial support for today's call

Neither the speakers nor planners for today's call have disclosed any financial interests related to the content of the meeting

This call is meant for healthcare facilities and is off the record and reporters should log off now

Housekeeping

- How to Mute/Unmute (Ctrl+ Shift+ M):
 - Press the Mute button on your phone if dialing in
- How to Raise Hand:
- How to use Chat:





Reminder

The purpose of this Learning and Communication Series is to **review core infection prevention practices** (beyond COVID-19) that must be used in all care settings, and to **foster discussion** among LA County Skilled Nursing Facilities about infection control practices.

We would like to remind everyone that the LAC DPH SNF COVID-19 Guidance has been updated as of 03-31-2022. Please take time to review this updated information. We will not be reviewing COVID-19 guidelines (including CDPH AFLs) during these sessions.

Link to Guidelines:

<http://publichealth.lacounty.gov/acd/ncorona2019/healthfacilities/snf/prevention/>



Infection Prevention Team

Jehan Mephors, RN, BSN

Walteena Brooks, LVN

Rachel Gibbs, RN, BSN

Marco Marquez, MPH, CIC

Krystal Smith, MSc, CIC

Praveena Mallam, PA

Contact Us: LACSNF@ph.lacounty.gov

Slides: <http://publichealth.lacounty.gov/acd/infectionpreventionseries.htm>



Objectives

- Describe **essential laboratory tests** for the identification of infectious pathogens
- Examine **common HAI** pathogens
- Foster discussion among LA County Skilled Nursing Facilities about infection control practices



Name the two vital functions of microbiology associated with infection prevention and control.



Name the two vital functions associated with infection prevention and control.

- **Clinical**
- **Epidemiological**



True or False

- The presence of an organism does not always mean that it is causing disease.



True or False

- The presence of an organism does not always mean that it is causing disease

- **TRUE**



Fill in the blank

- The lab order of CBC with (blank) will help us determine if an infection is bacterial or viral.

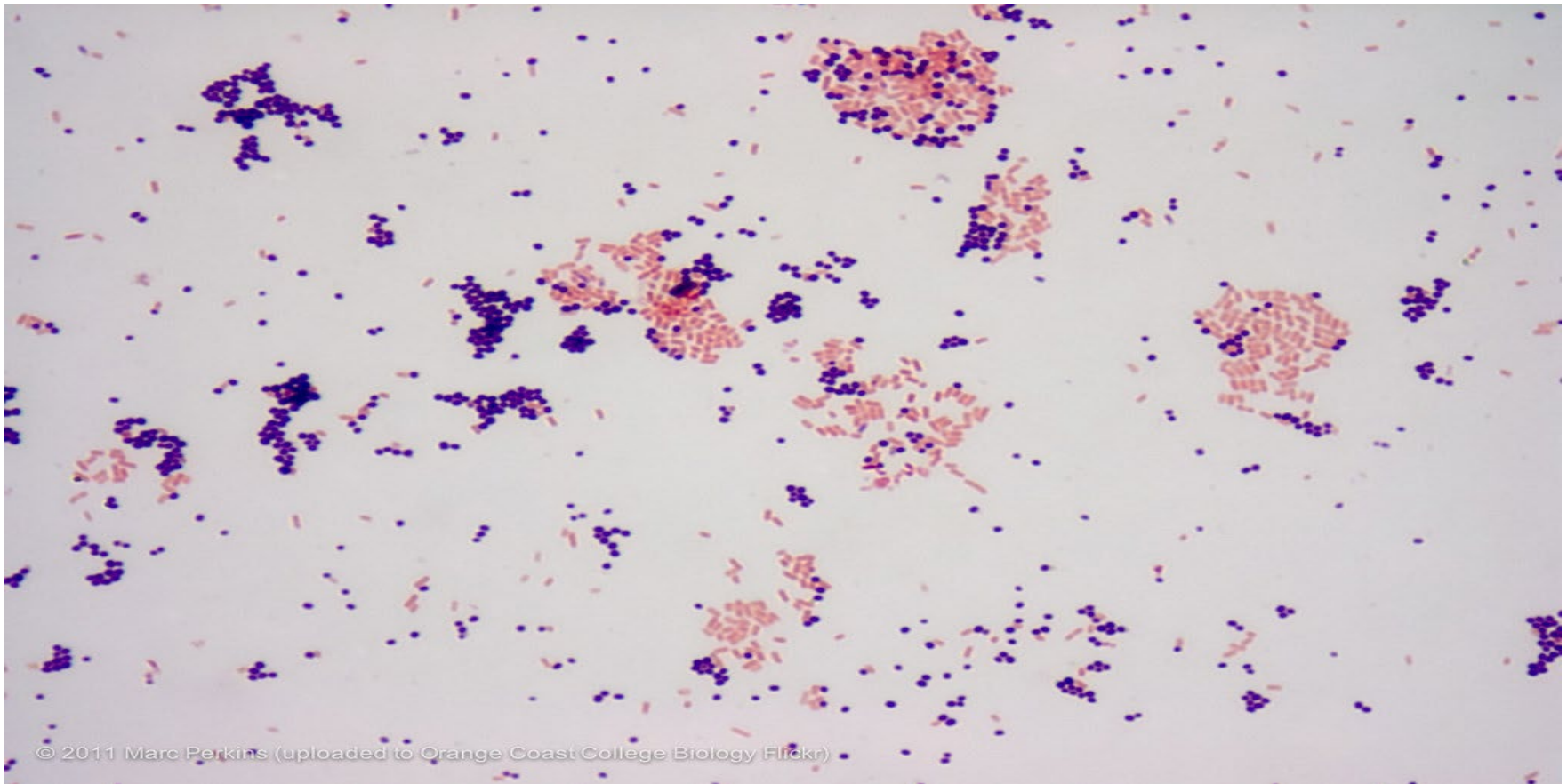


Fill in the blank

- The lab order of CBC with (blank) will help us determine if an infection is bacterial or viral.
- **A: differential**

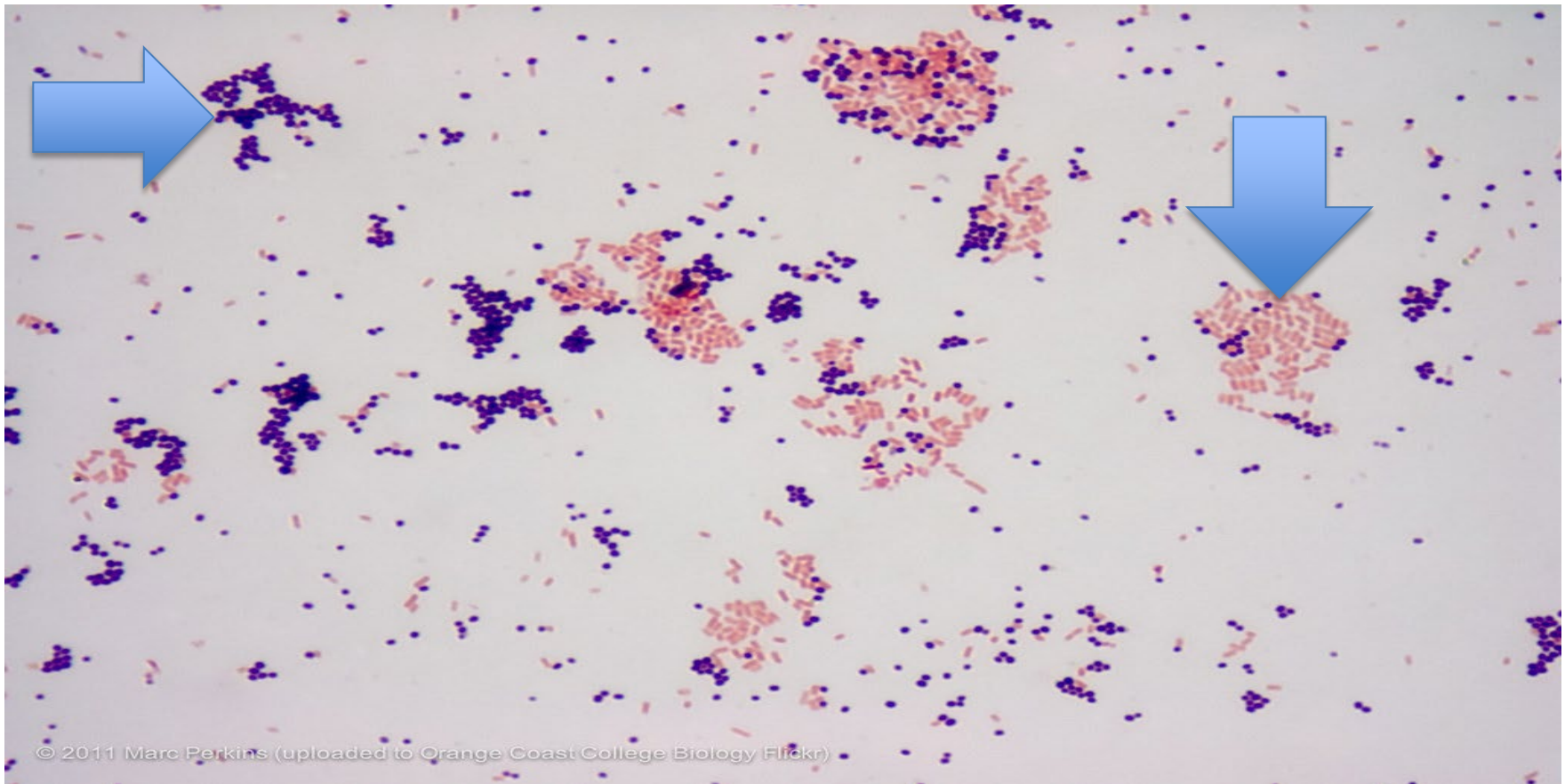
What do the purple stained organisms represent?

What do the red stained organisms represent?



1.chrome-
extension://efaidnbmnnnibpcajpcglclefindmkaj/viewer.html?pdfurl=https%3A%2F%2Fwww.cdph.ca.gov%2FPrograms%2FCHCQ%2FHAI%2FCDPH%2520D
ocument%2520Library%2F2019_11_Intro.Micro_Approved02.22.19.pdf

What do the purple stained organisms represent? What do the red stained organisms represent?



© 2011 Marc Perkins (uploaded to Orange Coast College Biology Flickr)

1.chrome-
extension://efaidnbmnnnibpcajpcglclefindmkaj/viewer.html?pdfurl=https%3A%2F%2Fwww.cdph.ca.gov%2FPrograms%2FCHCQ%2FHAI%2FCDPH%2520D
ocument%2520Library%2F2019_11_Intro.Micro_Approved02.22.19.pdf



What are examples of gram-positive UTI pathogens?



What are examples of gram-positive UTI pathogens?

- Enterococcus
- Staphylococcus saprophyticus



How does an antibiogram help a clinician?



How does an antibiogram help a clinician?

- Help guide the clinician and pharmacist in selecting the best empiric antimicrobial treatment
- Detect and monitor trends in antimicrobial resistance



What microbiology topics would you like to discuss in the future?



Programming

Session	Date (2022)	Topic
Week 1	March 9 th , 2022	Personal Protective Equipment (PPE)
Week 2	March 16 th , 2022	Office Hours
Week 3	March 23 rd , 2022	Introduction to QAPI in SNFs
Week 4	March 30 th , 2022	Office Hours
Week 5 (today!)	April 6 th , 2022	Introduction to Microbiology
Week 6	April 13 th , 2022	Office Hours
Week 7	April 20th, 2022	Environmental Services (EVS)
Week 8	April 27 th , 2022	Office Hours
Week 9	May 4 th , 2022	Multi-Drug Resistant Organisms (MDRO)
Week 10	May 11 th , 2022	Office Hours



Reminder

The purpose of this Learning and Communication Series is to **review core infection prevention practices** (beyond COVID-19) that must be used in all care settings, and to **foster discussion** among LA County Skilled Nursing Facilities about infection control practices.

We would like to remind everyone that the LAC DPH SNF COVID-19 Guidance has been updated as of 03-31-2022. Please take time to review this updated information. We will not be reviewing COVID-19 guidelines (including CDPH AFLs) during these sessions.

Link to Guidelines:

<http://publichealth.lacounty.gov/acd/ncorona2019/healthfacilities/snf/prevention/>



Questions

