



## Disclosures

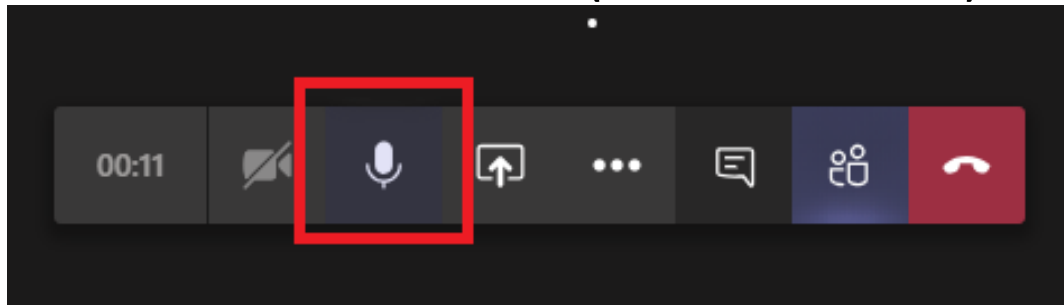
There is no commercial support for today's call

Neither the speakers nor planners for today's call have disclosed any financial interests related to the content of the meeting

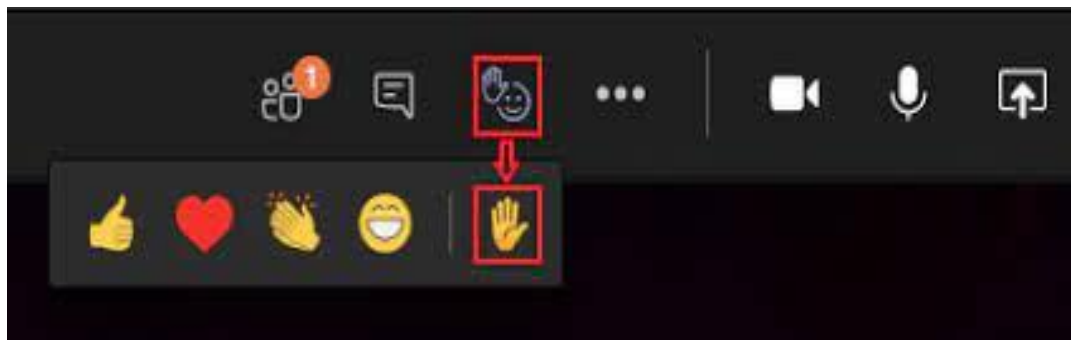
This call is meant for healthcare facilities and is off the record and reporters should log off now

# Housekeeping

- How to Mute/Unmute (Ctrl+ Shift+ M):

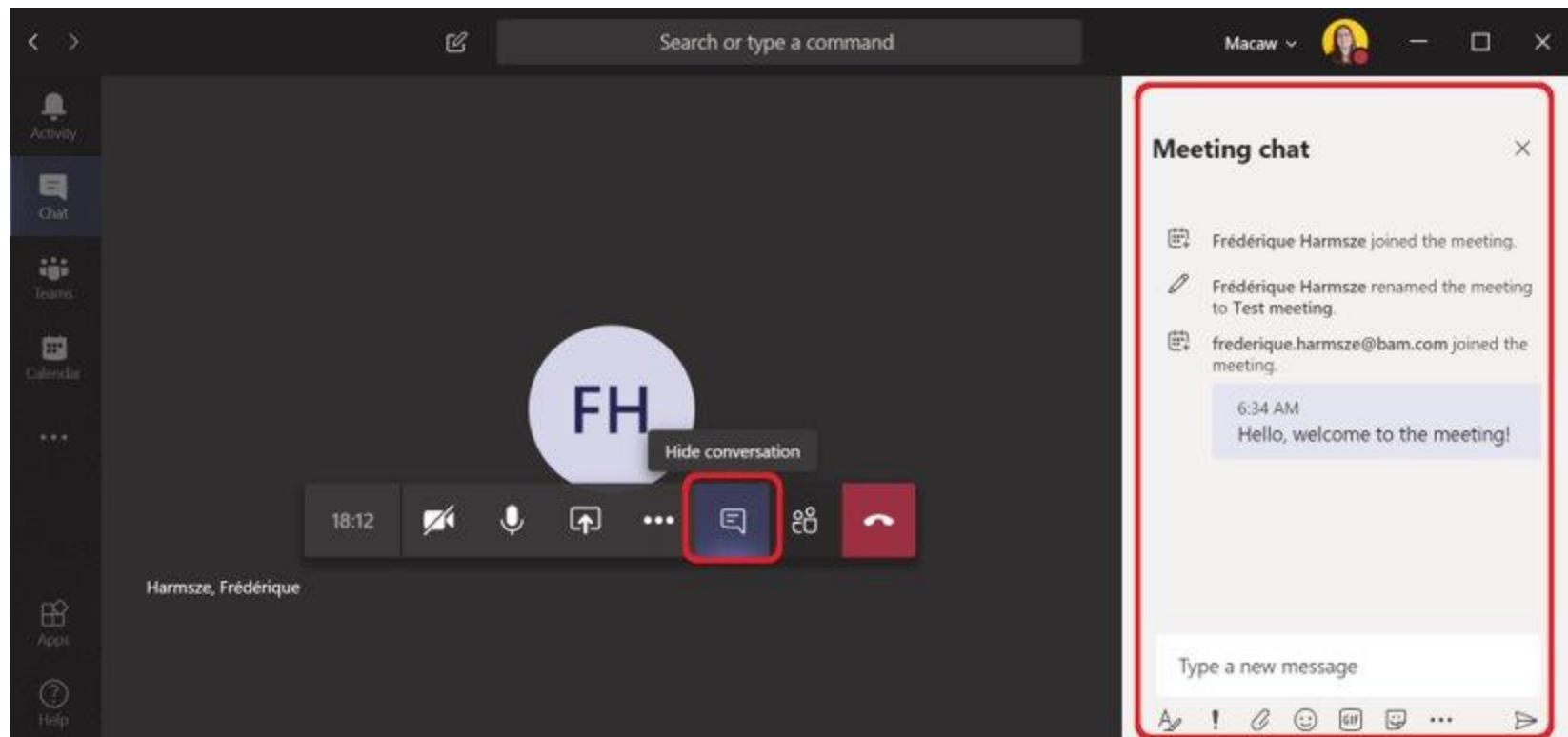


- How to Raise Hand:



# Housekeeping

- How to use chat:





# Reminder

We want to thank you all for your wonderful questions these last few weeks, during our Ask the IP Sessions. The focus of these sessions is core infection prevention practices (beyond COVID-19) that must be used in all care settings and to foster discussion among LA County Skilled Nursing Facilities about infection control practices.

We would like to remind everyone that the LACDPH COVID-19 Guidance has been updated as of 10-01-2021, please take time to review the updates and the current guidance from the County. We will not be reviewing guidelines during these sessions.

## **Link to Guidelines:**

<http://publichealth.lacounty.gov/acd/ncorona2019/healthfacilities/snf/prevention/>



## DPH Infection Prevention Team

Walteena Brooks, LVN

Rachel Gibbs, RN, BSN

Marco Marquez, MPH, CIC

Harriett Pitt, MS, RN

Krystal Smith, MSc, CIC

Contact Us: [LACSNF@ph.lacounty.gov](mailto:LACSNF@ph.lacounty.gov)

Slides: <http://publichealth.lacounty.gov/acd/infectionpreventionseries.htm>



Icebreaker:

## Why Do IPs Matter?





# Objectives

- Review IP **professional development pathways**, including certification and organization membership
- Learn **how to find resources** and the **variety of IP settings**
- Foster discussion among LA County Skilled Nursing Facilities about infection control practices

# Professional Development

## Novice

- Limited knowledge
- Limited skills
- Limited experience
- Relies on rules & concepts to guide their practice
- Starting to develop their knowledge & skills in the core competencies

## Becoming Proficient

- Continuing to build on the core competencies
- Developing into an independent practitioner
- Briefly move beyond rule-based thinking
- Varies based on prior training, setting, role, team size

## Proficient

- Demonstrates proficient knowledge of core competencies
- Holds the CIC credential
- Applies core competencies independently
- Deepens knowledge of future-oriented domains
- Uses past experiences to shape future thinking

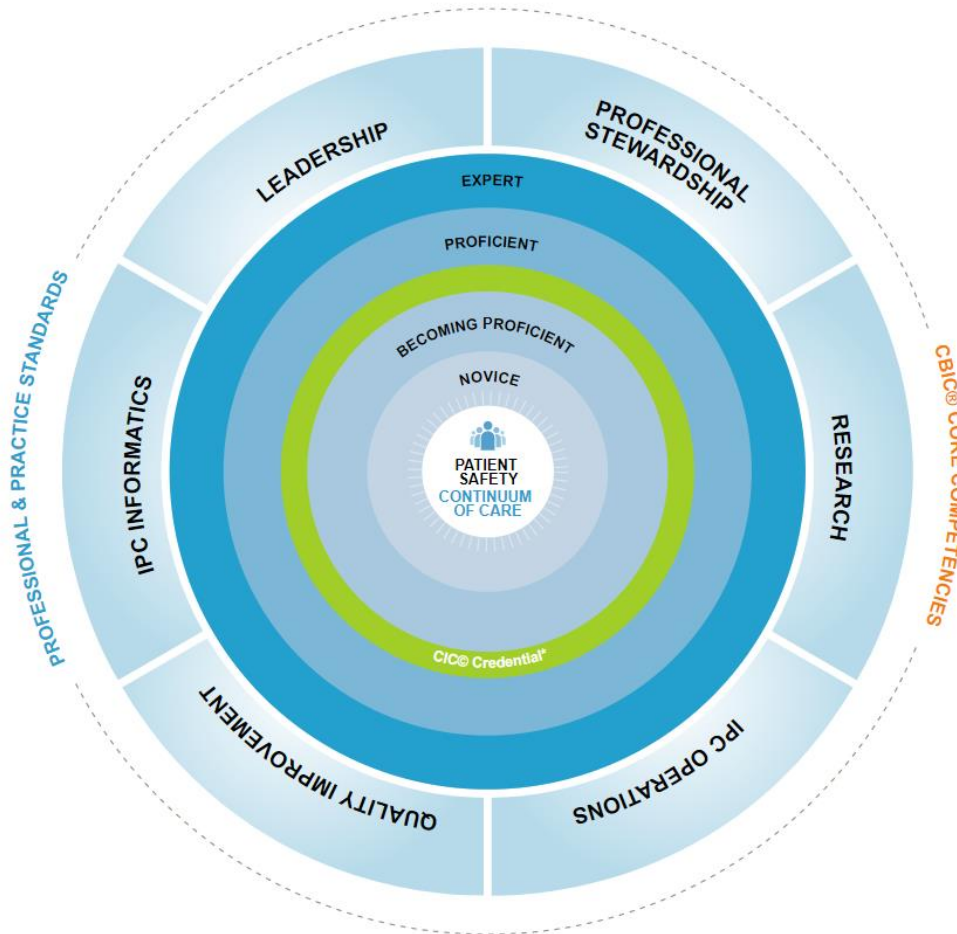
## Expert

- Consistently and reliably demonstrates professional expertise & mastery in core competencies
- Shares their knowledge & skills via mentoring, research, leadership
- Can analyze & guide future decisions based on experience

1. <https://apic.org/professional-practice/roadmap/>



# Professional Development



Experience

Time

Role

Membership

Continuing Education

- Certification
- Degree programs
- Webinars
- Conferences

Networking & Mentorship

1. <https://apic.org/professional-practice/infection-preventionist-ip-competency-model/>

# Professional Development



Name: \_\_\_\_\_

Date: \_\_\_\_\_

## Competency Self-Assessment Activity for Novice or Becoming Proficient IPs

CBIC Core Competencies – APIC Competency Model Future-Oriented Competency Domains

Self-Assessed Rating Scale and Comfort Level (Knowledge/Skills/Experience/Confidence):

1. No idea   2. Unsure   3. Some knowledge   4. Know it

Competency categories, CBIC domains	IP practice areas as identified in CBIC practice analysis	Assessment of personal competency in each practice area	For each category list one specific question you have and/or learning goal (something you would like to learn more about!)
For more details on the CBIC exam content categories visit <a href="https://www.cbic.org/CBIC/Exam-Prep-Resources.htm">https://www.cbic.org/CBIC/Exam-Prep-Resources.htm</a>			
Identification of infectious disease processes (CBIC)	a. Interpret the relevance of diagnostic and laboratory reports	1   2   3   4	<ul style="list-style-type: none"> <li>Specific IPC question you have (could be related to your own facility) and/or learning goal (area you want to learn more about).</li> </ul>
	b. Identify appropriate practices for specimen collection, transportation, handling, and storage	1   2   3   4	
	c. Correlate clinical signs and symptoms with infectious disease process	1   2   3   4	

1. [https://apic.org/wp-content/uploads/2019/05/IP\\_Comp\\_Self\\_Assessment-2019-Activity\\_5-24-19.pdf](https://apic.org/wp-content/uploads/2019/05/IP_Comp_Self_Assessment-2019-Activity_5-24-19.pdf)

# Infection Prevention Certification

## CIC

### Certification in Infection Prevention & Control

- Standardized examination measure of basic knowledge, skills and abilities expected of professionals working in the field of IPC
- Multiple choice & exam content
- Application process & eligibility requirements
- Recertification via exam or continuing education

## CBIC

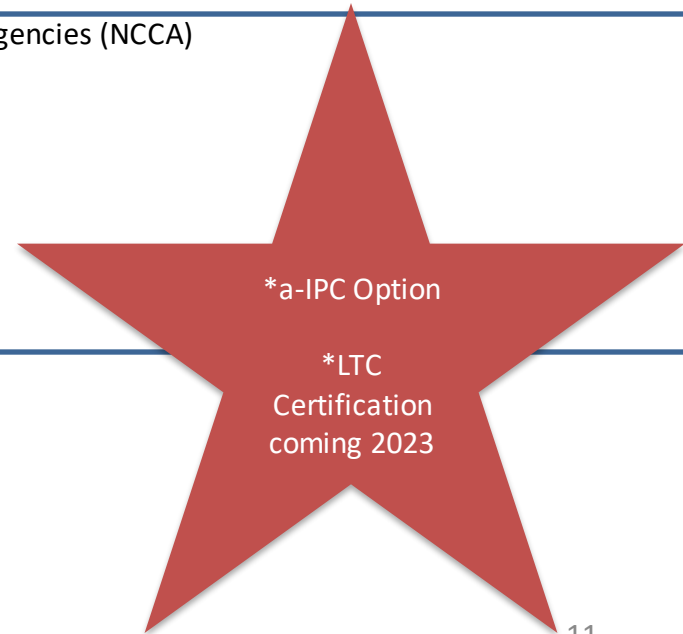
### Certification Board of Infection Control & Epidemiology

- Established by APIC in 1981 & Accredited by the National Commission for Certifying Agencies (NCCA)
- Maintain & improve the accredited certification program
- Increase the # of certified IPs
- Establish & maintain partnerships with organizations

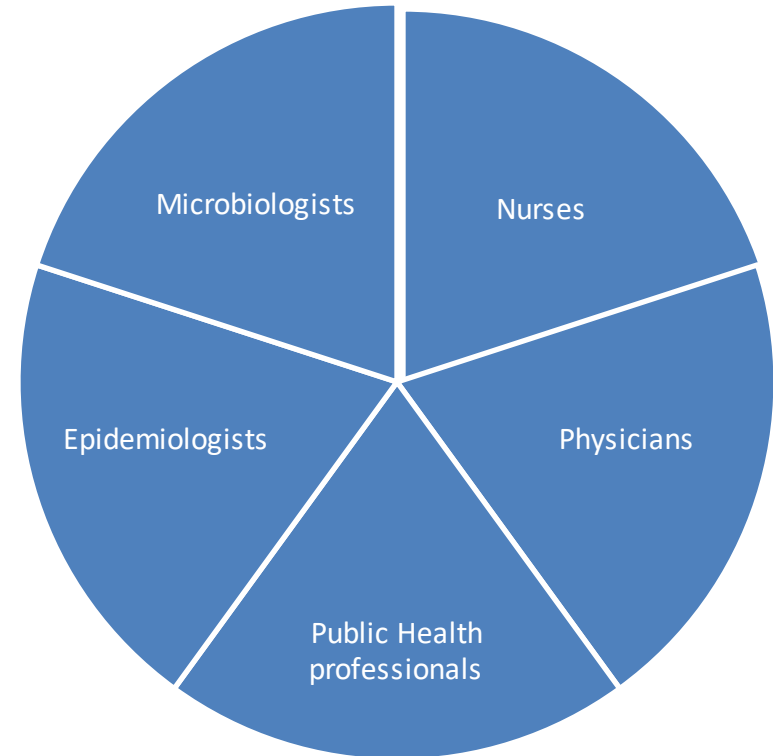
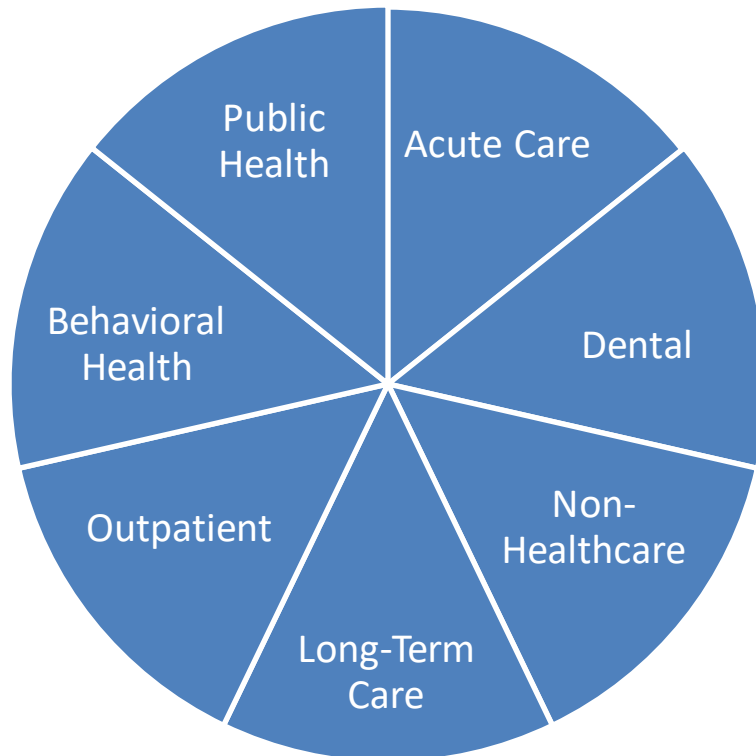
## Why Certify?

- Earn internationally recognized level of competency in IPC
- Professional credibility & prestige
- Personal satisfaction

1. <https://www.cbic.org/>



# Practice Settings and Professions



1. <https://apic.org/wp-content/uploads/2021/01/FINAL-SPannualreport.pdf>

# Where to Find Resources

## Regulatory Bodies

- CDPH
- LAC DPH
- CMS
- OSHA
- EPA
- FDA

## Guidance Organizations

- CDC
- CDPH
- LAC DPH
- APIC
- SHEA
- QIO/HSAG
- ACIP

## Other IPs

- Mentors
- SNF IP  
Community
- CA APIC
- GLA APIC
- LAC DPH



# Where to Find Resources

Resource	Link
LAC DPH	<a href="http://www.publichealth.lacounty.gov/acd/SNF.htm">http://www.publichealth.lacounty.gov/acd/SNF.htm</a> <a href="http://publichealth.lacounty.gov/acd/TransmissionBasedPrecautions.htm">http://publichealth.lacounty.gov/acd/TransmissionBasedPrecautions.htm</a>
CDPH	<a href="https://www.cdph.ca.gov/Programs/CHCQ/HAI/Pages/HAIProgramHome.aspx">https://www.cdph.ca.gov/Programs/CHCQ/HAI/Pages/HAIProgramHome.aspx</a> <a href="https://www.cdph.ca.gov/Programs/CHCQ/HAI/Pages/IP_TrainingForSNFs_OnlineCourse.aspx">https://www.cdph.ca.gov/Programs/CHCQ/HAI/Pages/IP_TrainingForSNFs_OnlineCourse.aspx</a>
OSHA	<a href="https://www.osha.gov/healthcare">https://www.osha.gov/healthcare</a>
EPA	<a href="https://www.epa.gov/regulatory-information-sector/healthcare-and-social-assistance-sector-naics-62">https://www.epa.gov/regulatory-information-sector/healthcare-and-social-assistance-sector-naics-62</a>
FDA	<a href="https://www.fda.gov/medical-devices/general-hospital-devices-and-supplies/personal-protective-equipment-infection-control">https://www.fda.gov/medical-devices/general-hospital-devices-and-supplies/personal-protective-equipment-infection-control</a>
CDC	<a href="https://www.cdc.gov/infectioncontrol/index.html">https://www.cdc.gov/infectioncontrol/index.html</a>
APIC	<a href="https://apic.org/">https://apic.org/</a>
SHEA	<a href="https://www.shea-online.org/">https://www.shea-online.org/</a>
HSAG	<a href="https://www.hsag.com/">https://www.hsag.com/</a>
ACIP	<a href="https://www.cdc.gov/vaccines/acip/index.html">https://www.cdc.gov/vaccines/acip/index.html</a>



# Programming

Session	Date (2021)	Covered Topics
Week 1	Wednesday, Sept 22nd	Antimicrobial Stewardship
Week 2	Wednesday, Sept 29th	Office Hours
Week 3	Wednesday, Oct 6th	Disease Surveillance
Week 4	Wednesday, Oct 13th	Office Hours
Week 5	Wednesday, Oct 20th	Outbreak Investigation
Week 6	Wednesday, Oct 27th	Office Hours
Week 7	Wednesday, Nov 3rd	Regulatory Bodies
Week 8	Wednesday, Nov 10th	Office Hours
Week 9	Wednesday, Nov 17th	Communication, Education and Advocacy
<del>Week 10</del>	<del>Wednesday, Nov 24th</del>	Week of Thanksgiving (off)
Week 11	Wednesday, Dec 1st	Water Management Programs, Legionella
Week 12 (Today!)	Wednesday, Dec 8th	Professional Development, Resources and Other IP Settings
<b>Week 13</b>	<b>Wednesday, Dec 15th</b>	<b>Office Hours</b>



## Reminder

We want to thank you all for your wonderful questions these last few weeks, during our Ask the IP Sessions. The focus of these sessions is core infection prevention practices (beyond COVID-19) that must be used in all care settings and to foster discussion among LA County Skilled Nursing Facilities about infection control practices.

We would like to remind everyone that the LACDPH COVID-19 Guidance has been updated as of 10-01-2021, please take time to review the updates and the current guidance from the County. We will not be reviewing guidelines during these sessions.

### **Link to Guidelines:**

<http://publichealth.lacounty.gov/acd/ncorona2019/healthfacilities/snf/prevention/>





# Questions

