

L. A. HOPE



What is LA HOPE?

Los Angeles Health Overview of a Pregnancy Event (L. A. HOPE) is a survey sponsored by the Los Angeles County Department of Public Health. We ask women who have suffered a fetal or infant loss about their experiences before, during, and after the pregnancy to understand why these tragic events happen.

Why is this project important?

There are many parents and families in Los Angeles County that have had an infant or fetal loss. Sadly, we don't know why some of these deaths happen. The L. A. HOPE Project will help us learn why these deaths occur so that we can provide information and services to reduce the risks of fetal and infant deaths and help mothers have healthy babies. In addition, we want to know how we can better support parents and families through the grieving process and subsequent pregnancies.

Frequently Asked Questions

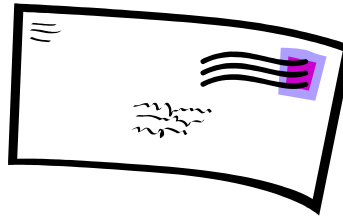


Will survey answers be kept private?

Yes—all answers are kept completely private to the extent permitted by law.

Is the survey available in multiple languages?

The survey is available in English and Spanish. Interviews in these and other languages can be done over the telephone.



How do we thank women for participating?

Women who are sent the survey also receive a gift certificate from a local grocery store as our way of saying thank you and to express our sympathy.

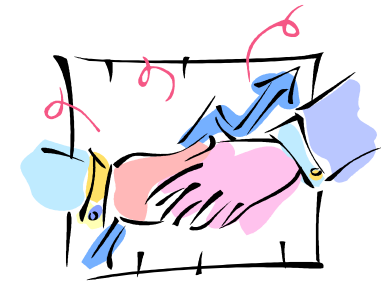
What if families need help, have questions, or need grief and bereavement resources?

Families may call us at (213) 639-6470. We also have a list of grief and bereavement resources on our website at <http://publichealth.lacounty.gov/mch/LAHOPE/LAHOPE.htm>

Recommendations from the LAHOPE

Findings

- ❖ Poor pregnancy outcomes such as infant and fetal deaths are a major public health concern affecting Los Angeles County.
- ❖ Focus on health before and between pregnancies, so women can prepare for healthy births before becoming pregnant.
- ❖ Create a system to identify high-risk women, both to themselves and their doctors, so that additional prenatal care services can be provided.
- ❖ Focus on assessing the mental health of pregnant women and providing support to those in need of services.
- ❖ Expand grief and bereavement resources; increase awareness of these resources through community referral systems.



From Data to Action

- ❖ LA HOPE has changed the way MCAH Programs collect and review information on fetal and infant deaths to focus on and improve services affecting mothers and babies. This method is being adopted by other local MCAH Programs such as San Diego and Sonoma County.



- ❖ In response to the large numbers of infant and fetal deaths, high LA HOPE response rates and requests for bereavement support, MCAH established a peer parent grief support group led by a Public Health Nurse. Families receive grief & bereavement materials, information on health between pregnancies and safe infant sleep education. But more importantly, they establish a special bond with other families in the group that will last a lifetime. To date, the parent grief support group has supported over 83 families. More than 380 parents, friends and family members have attended and over 20 families have reported subsequent healthy babies.

L. A. HOPE Project
Los Angeles County Department of Public Health
Maternal, Child & Adolescent Health Programs

600 S. Commonwealth Ave, Suite 800
Los Angeles, CA 90005

(213) 639-6470

publichealth.lacounty.gov/mch/LAHOPE/LAHOPE.html



Los Angeles
Health Overview of
a Pregnancy Event



Maternal, Child & Adolescent Health Programs
(MCAH)

Funding for the printing of this brochure was made possible by the State of California Department of Public Health, Maternal Child and Adolescent Health Branch through the Los Angeles County Department of Public Health.