



Implementing Syphilis Screening at the County Jail

Satvinder K. Dhaliwal, MPH

County of Fresno

Department of Public Health

Screening Guidelines

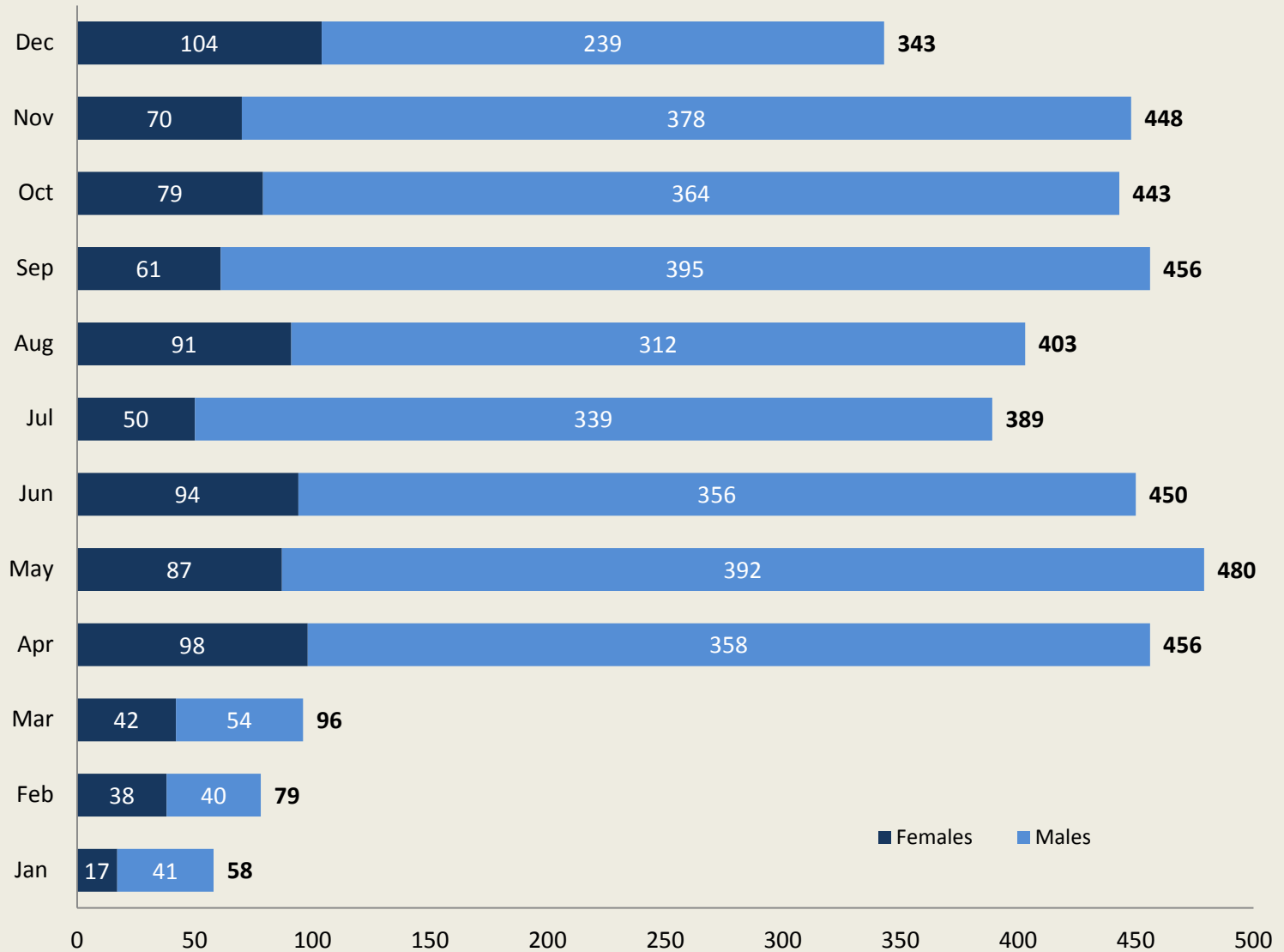
Target population:

- All booked females ≤ 35 years
- All booked males ≤ 30 years

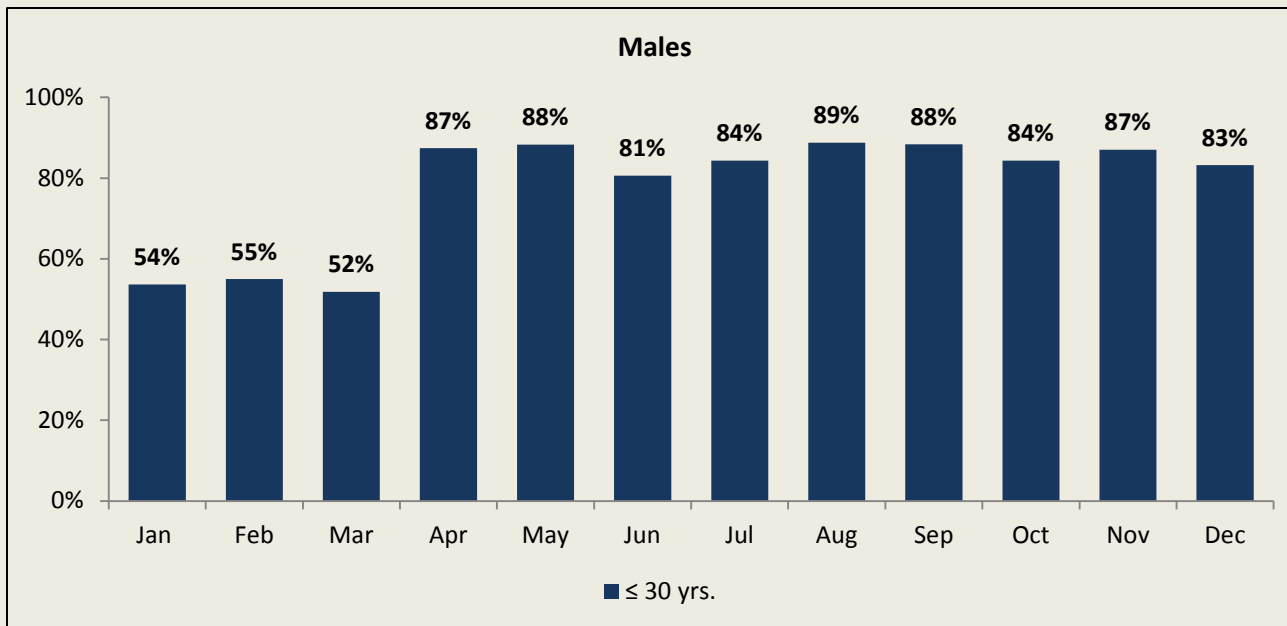
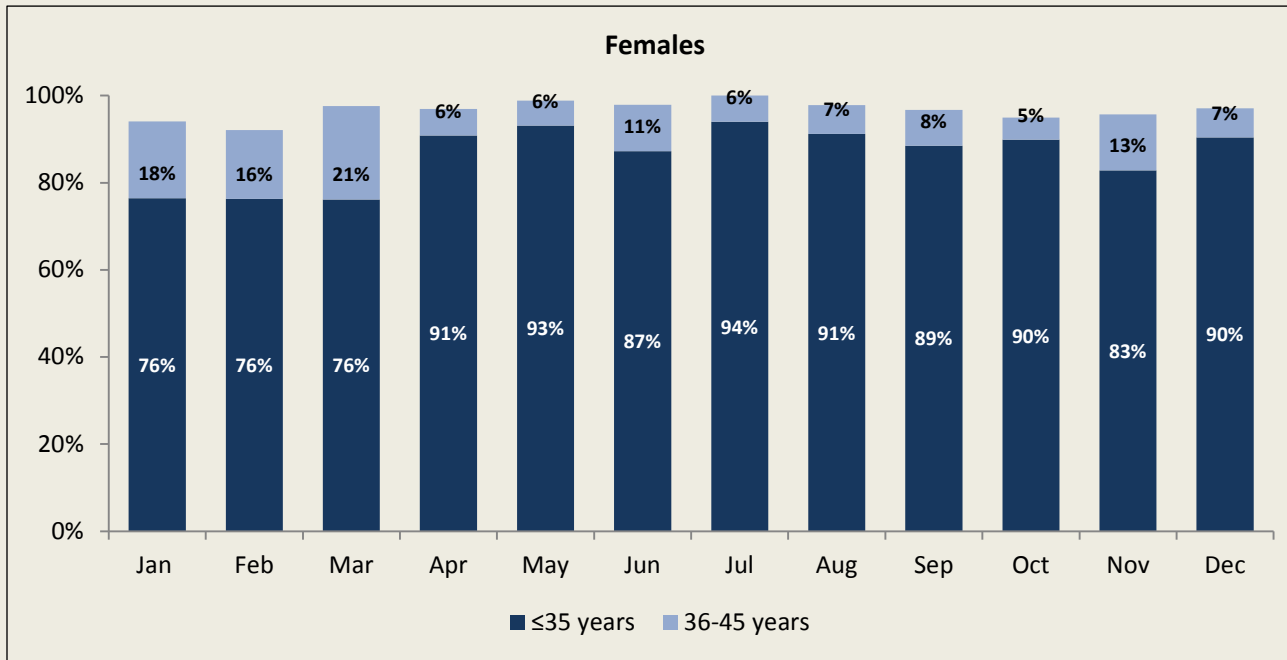
Implementation:

- Syphilis screening question is included in the initial intake questionnaire for all inmates beginning April 1, 2016.
- Lab is drawn within 12-24 hours at the inmate's physical location.
- Inmates can refuse syphilis testing.

Inmates Tested by Gender and Month, 2016

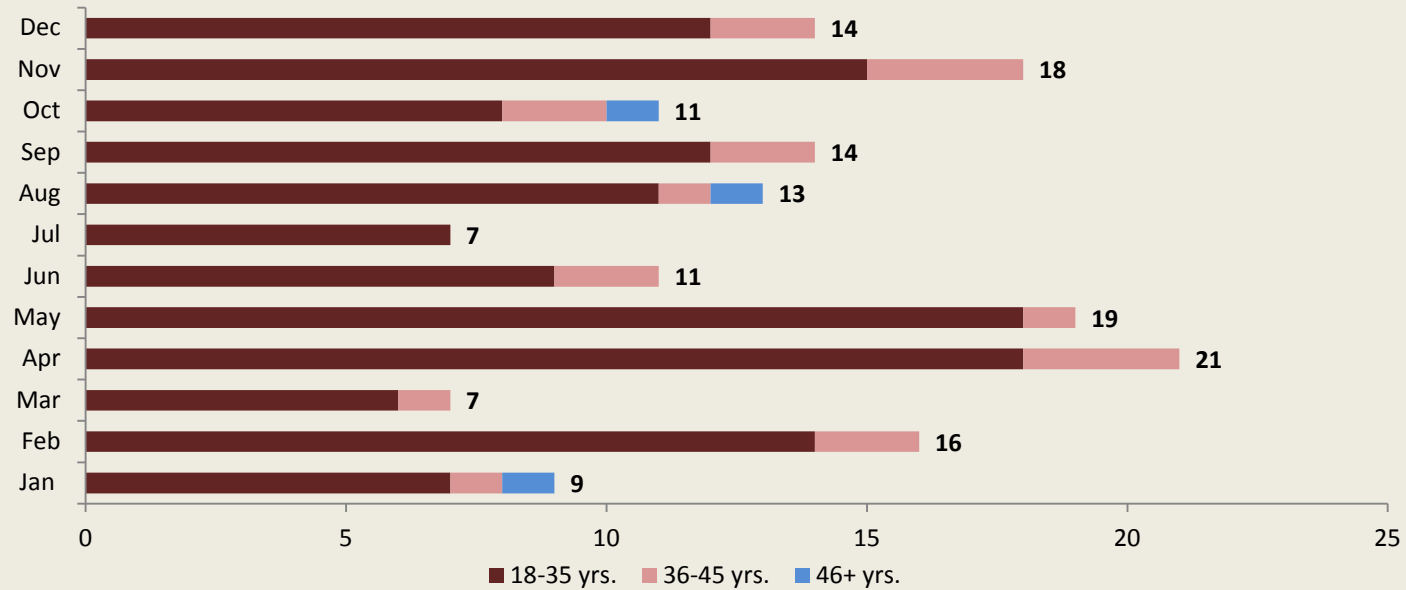


Proportion of Tested Inmates Within Target Population



Females Tested

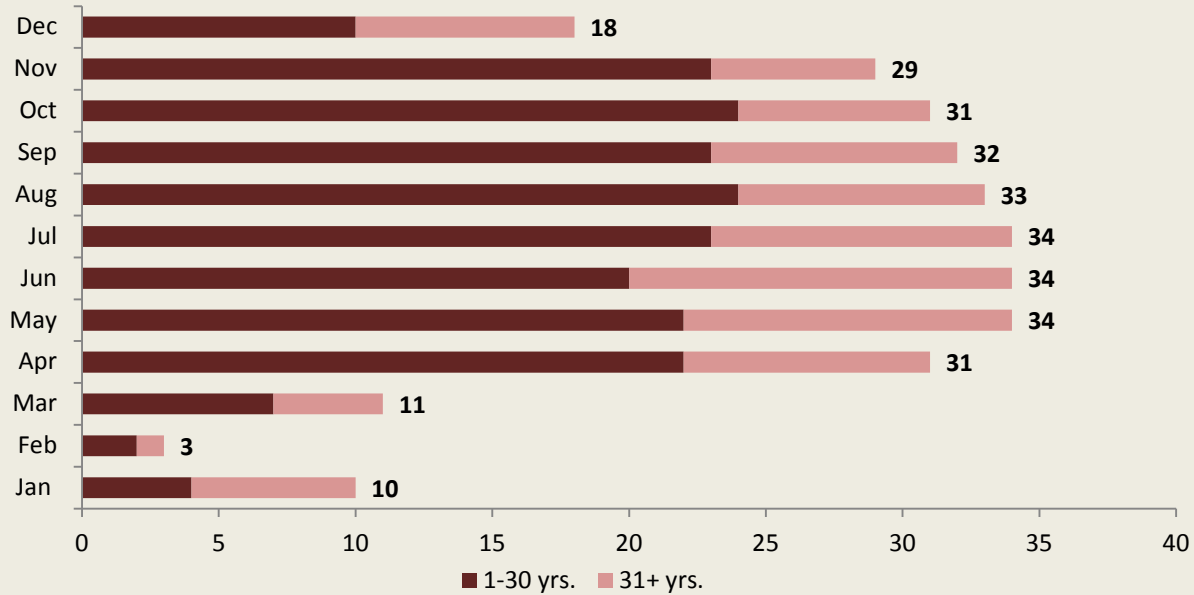
Abnormal RPR Result by Month and Age Group



	18-35 yrs	36-45 yrs.	46+ yrs.	Total Positive	% positive	Total Tested
Jan	7 (78%)	1 (11%)	1 (11%)	9	53%	17
Feb	14 (88%)	2 (13%)	0	16	42%	38
Mar	6 (86%)	1 (14%)	0	7	17%	42
Apr	18 (86%)	3 (14%)	0	21	21%	98
May	18 (95%)	1 (5%)	0	19	22%	87
Jun	9 (82%)	2 (18%)	0	11	12%	94
Jul	7 (100%)	0	0	7	14%	50
Aug	11 (85%)	1 (8%)	1 (8%)	13	14%	91
Sep	12 (86%)	2 (14%)	0	14	23%	61
Oct	8 (73%)	2 (18%)	1 (9%)	11	14%	79
Nov	15 (83%)	3 (17%)	0	18	26%	70
Dec	12 (86%)	2 (14%)	0	14	13%	104

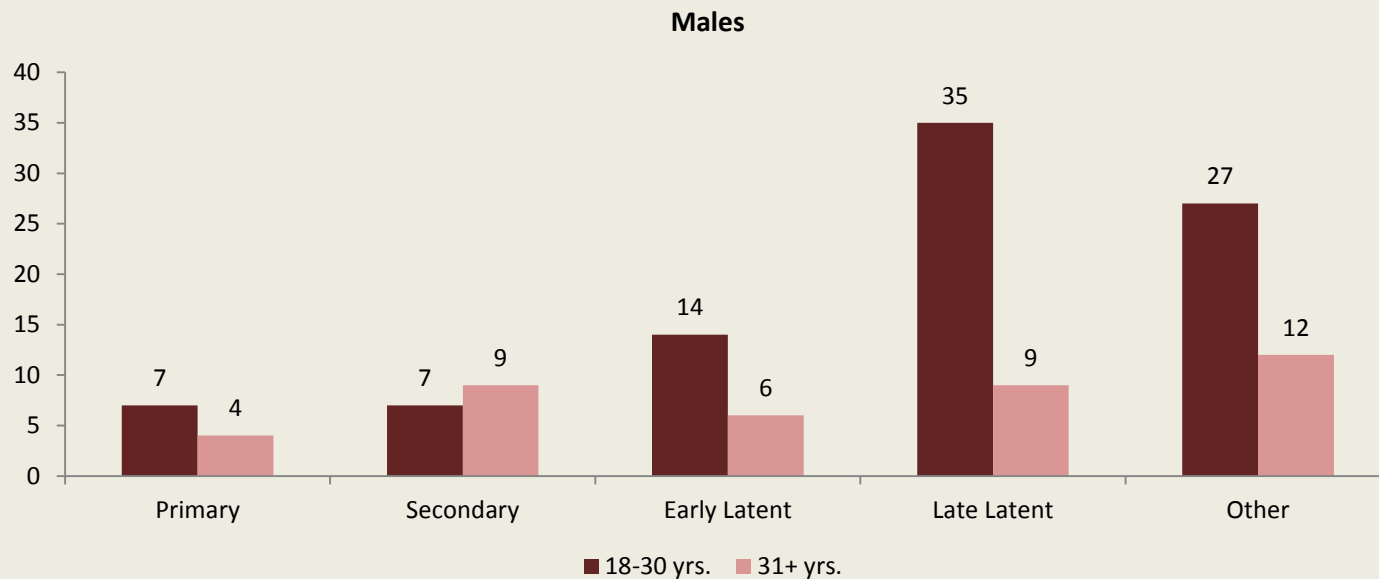
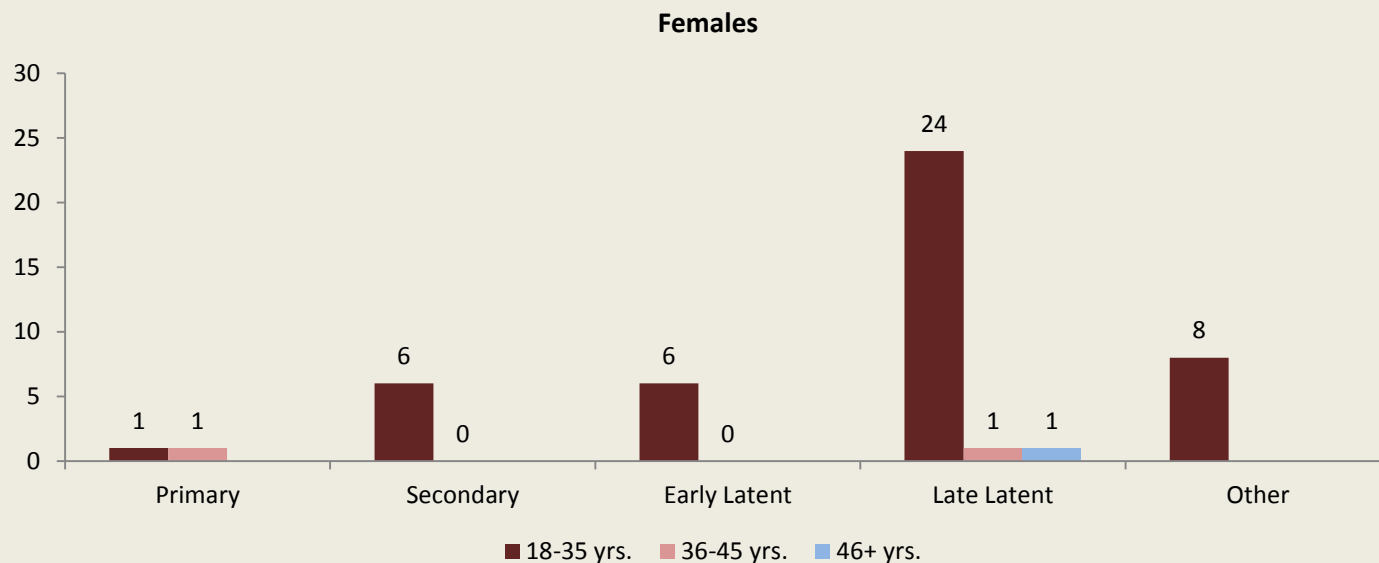
Males Tested

Abnormal RPR Result by Month and Age Group



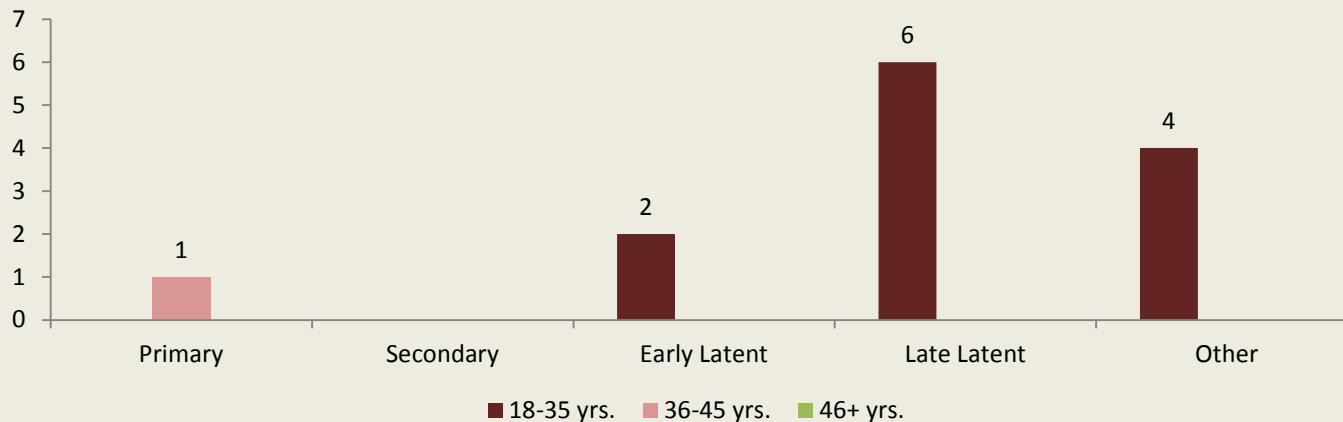
	18-30 yrs.	31+ yrs.	Total Positive	% Positive	Total Tested
Jan	4 (40%)	6 (60%)	10	24%	41
Feb	2 (67%)	1 (33%)	3	8%	40
Mar	7 (64%)	4 (36%)	11	20%	54
Apr	22 (71%)	9 (29%)	31	9%	358
May	22 (65%)	12 (35%)	34	9%	392
Jun	20 (59%)	14 (41%)	34	10%	356
Jul	23 (68%)	11 (32%)	34	10%	339
Aug	24 (73%)	9 (27%)	33	11%	312
Sep	23 (72%)	9 (28%)	32	8%	395
Oct	24 (77%)	7 (23%)	31	9%	364
Nov	23 (79%)	6 (21%)	29	8%	378
Dec	10 (56%)	8 (44%)	18	8%	239

Disease Stage of Detected Cases, 2016

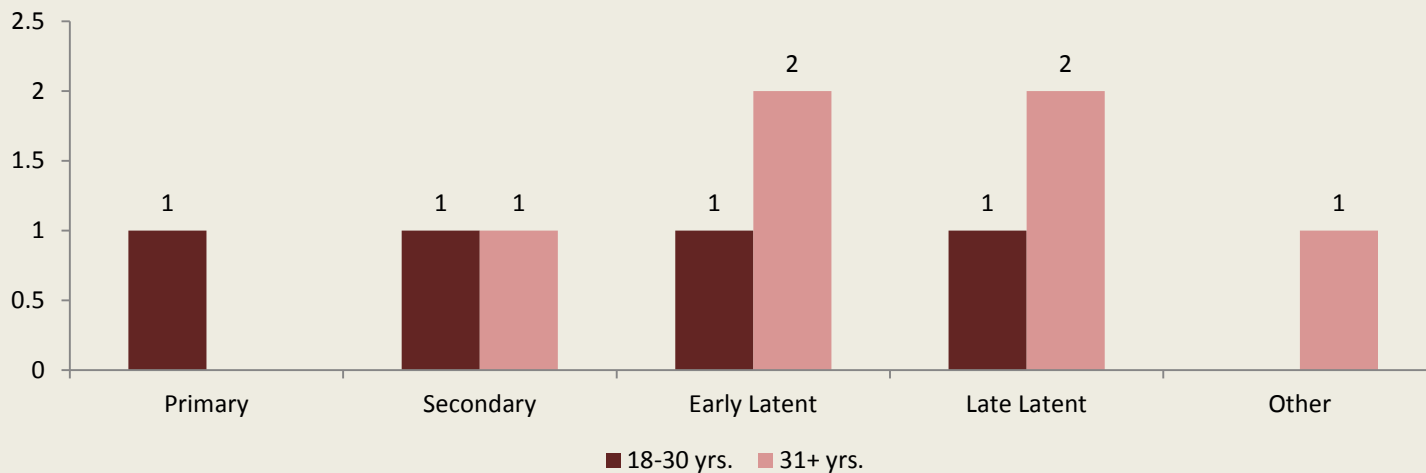


Disease Stage of Detected Cases, January-March 2016

Female

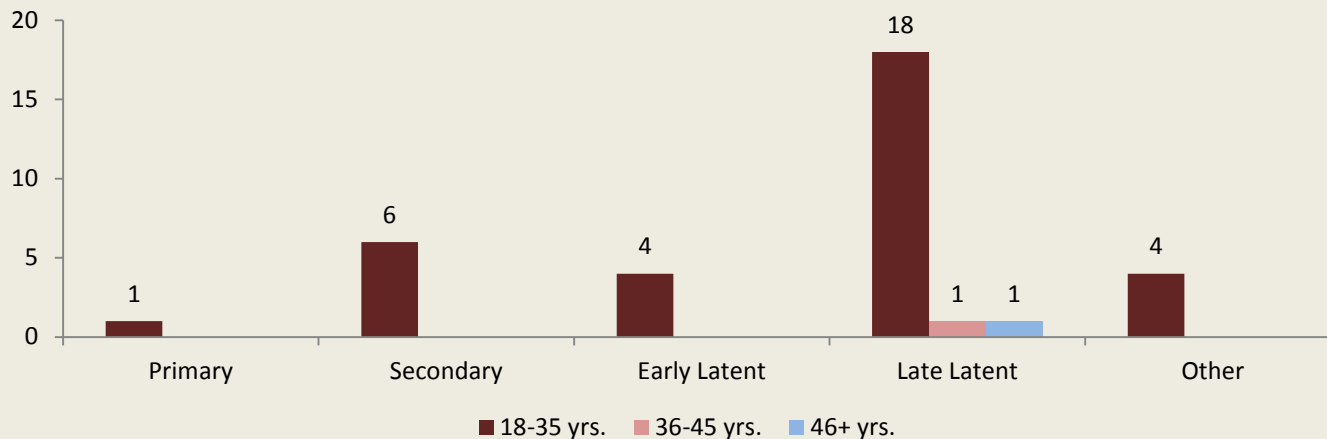


Male

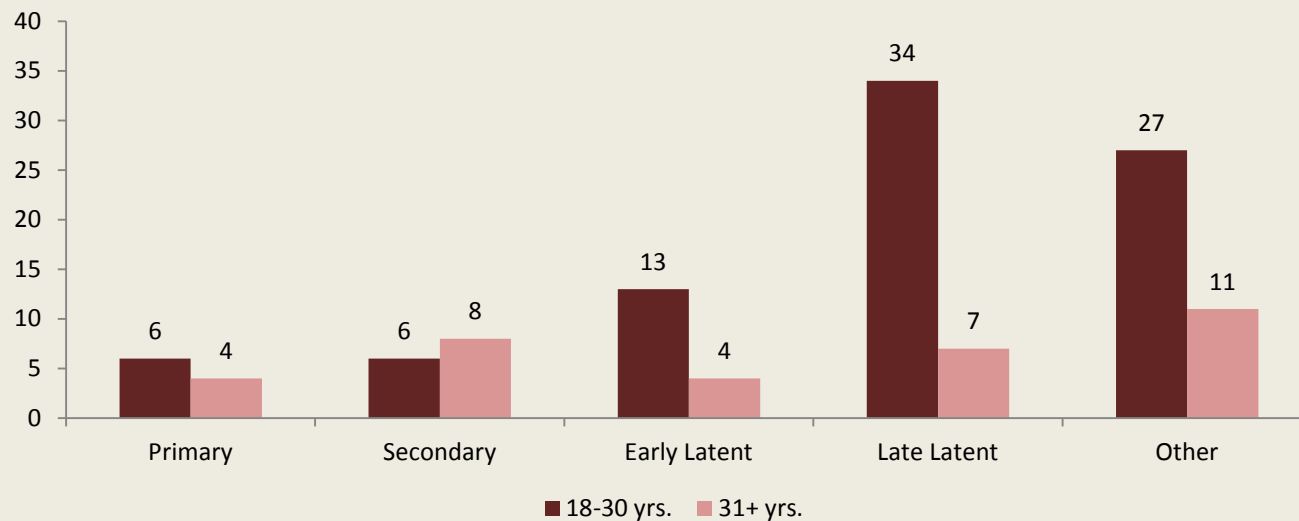


Disease Stage of Detected Cases, April-December 2016

Females



Males



Limitations

- Access to corrections data
- Inmates released prior to treatment
- Changes in leadership