



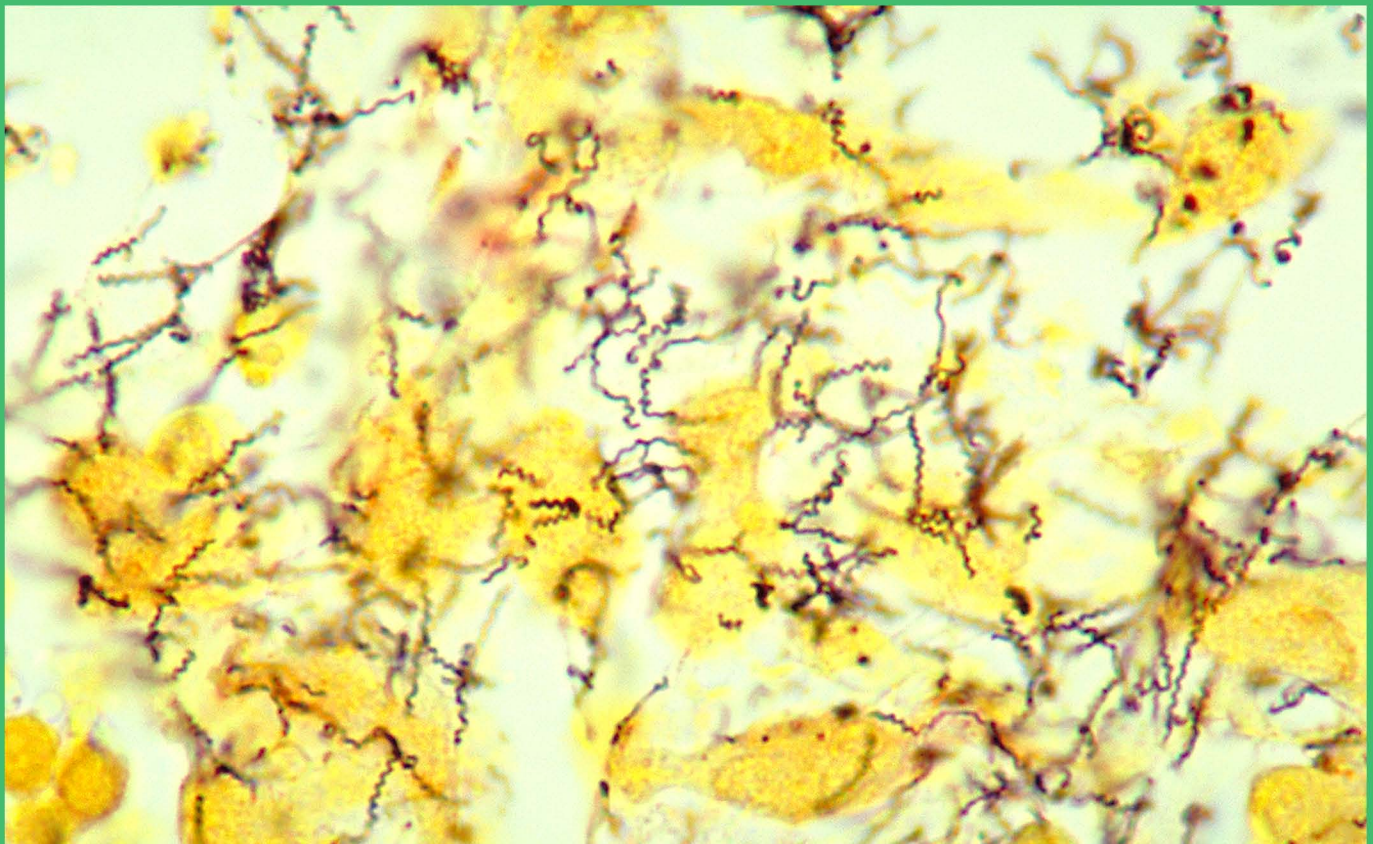
COUNTY OF LOS ANGELES
Public Health

Sexually Transmitted Disease Program

Early Syphilis Surveillance Summary

Cases Reported as of May 31, 2010

Issued August 10, 2010



2615 South Grand Avenue, Room 500
Los Angeles, CA 90007
Tel: (213) 744-3070 Fax: (213) 749-9606

<http://publichealth.lacounty.gov/std>



JONATHAN E. FIELDING, M.D., M.P.H.
Director and Health Officer

JONATHAN E. FREEDMAN
Chief Deputy Director

SEXUALLY TRANSMITTED DISEASE PROGRAM

PETER R. KERNDT, M.D., M.P.H., Director

2615 S. Grand Avenue, Room 500
Los Angeles, California 90007
TEL (213) 744-3070 • FAX (213) 749-9606

www.lapublichealth.lacounty.gov

BOARD OF SUPERVISORS

Gloria Molina
First District

Mark Ridley-Thomas
Second District

Zev Yaroslavsky
Third District

Don Knabe
Fourth District

Michael D. Antonovich
Fifth District

August 10, 2010

Dear Colleague:

We are pleased to release the *Early Syphilis Annual Surveillance Report, 2010* for Los Angeles County. This report summarizes early syphilis cases reported as of May 31, 2010. Between January 1 and May 31, 2010, 537 early syphilis cases were reported. Of these, 76% of syphilis cases were reported among men who had sex with men/women (MSM and MSM/W), 6% among females, 17% among African-Americans, and 50% among Latinos. Of those 516 cases with known HIV status, 58% of the cases reported being HIV infected. The highest proportion of early syphilis cases continues to be concentrated in Metro (Service Planning Area 4) [40%], and San Fernando Valley (Service Planning Area 2) [14%].

If you would like to view or download the *Early Syphilis Surveillance Summary*, please visit the STD Program website at <http://publichealth.lacounty.gov/std>. You may also request to receive future reports via e-mail by calling the STD Program at (213) 744-3070.

We hope this report is a useful tool for your STD prevention and intervention programs.

Sincerely,

A handwritten signature in black ink that reads "Peter R. Kerndt".

Peter R. Kerndt, M.D., M.P.H.
Director, Sexually Transmitted Disease Program

The *Early Syphilis Surveillance Summary* is published on a monthly basis by the Sexually Transmitted Disease (STD) Program of the Los Angeles County Department of Public Health. This report is also available in PDF format at <http://publichealth.lacounty.gov/std/>.

If you would like to receive surveillance reports and other information from the Sexually Transmitted Disease Program, register for STDInfo online at <http://ladhs.org/listserv>.

SUGGESTED CITATION

Sexually Transmitted Disease Program, Los Angeles County Department of Public Health. *Early Syphilis Surveillance Summary, May 31, 2010; pp 1-45.*

Department of Public Health

Jonathan E. Fielding, M.D., M.P.H.
Director and Health Officer

Jonathan E. Freedman, M.S.P.H.
Chief Deputy Director

Robert Kim-Farley, M.D., M.P.H.
Director, Communicable Disease Control and Prevention



Sexually Transmitted Disease Program

Peter R. Kerndt, M.D., M.P.H.
Director, Sexually Transmitted Disease Program
Jacqueline Battle, Honor Drake, Julie Lo, Stacey Morita, Janet Paul, LaShawnda Royal, Addie Simon

Sarah Guerry, M.D.
Medical/Clinical Services Unit
Melina Boudov, Monica Munoz, Ali Stirland, Susan Walker, Christine Wigen, M.D., M.P.H.

Melina Boudov, M.A.
Clinical Unit: Infertility Prevention Project
Sara Alvarez, Kimberly Coffee, Kimberly Givan, Marisol Mejia, Kirsten Wilson

Monica Munoz, R.N., B.S.N., M.P.H.
Clinical Unit: Nursing Services
Jeanette Brown, Raquel Fernandez, Lenita Johnson, Aineeh Montano Lee, Ramon Mendoza, Terry Miller, Audrey Miyahira, Franklin Villacres, Jennifer Vonghack

Jorge A. Montoya, Ph.D.
Outreach, Communications, Research, and Assessment

John Copeland, Aaron Plant, Harlan Rotblatt

Getahun Aynalem, M.D., M.P.H.
Epidemiology and Surveillance
Michael Chien, Binh Goldstein, Ellen Rudy

Frank Ramirez
Field Services

Felipe Arevalo, John Cabeso, Guillermo Campos, Yee Chan, Johnny Cross, Yvonne Curtis, Patricia Dominguez, Katrin Eskandary, Janae Kingcade, Thelma McClinton, Gabriel Montano, Anna Orujyan, Sevana Pirjan, Nancy Ramos, Roberto Rocha, Sandra Rogers, Monireh Seino, Funmi Thomas, Eleanor Tupas, Jessica Utley, Elizabeth Valencia, Tasha Wagner, Akia Wilburn, Jolene Yoneoka, Leslie Zuniga

Jane Steinberg, Ph.D., M.P.H.
Policy, Programs and Health Education
Ana Hernandez, Phoebe Macon, Philip Phan, Araceli (Sally) Villanueva

Kai-Jen Cheng, M.S.
Information Systems and Data Management
Rosa Babalian, Mark Banks, Yetimwork Campbell, Debra Campos, Cynthia Carr, Susanna Chalikian, Teo Cruz, Patryck de Ynchausti, Yolanda Galvan, Seda Garibyan, Mildred Gonzales, Alice Gonzalez, Nawal Habashi, Peter He, Lan Lam, Julius Lim, Albert Lin, Debra Liscano, Jackie Moore, Shakeh Novagian, Issa Ortuno, Marites Renales, Ramon Reyes, Harry Rollins, Valerie Rosiles, Terrie Ross, Joselene Samson, Michael Saucedo, Lillian Tom, Vanessa Tran, Xiaomei Tong, Adeline Umboh, Chi-Ngai (David) Yu, Courtney Williams, Zhiwei (Waley) Zeng

Yolanda Cavalier
Quality Assurance, Custody, and Mobile Testing Unit
Maria Arevalo, Patricia Barnett, Mario Campana, Yolanda Cavalier, Sandra Chacon, Cynthia Davison, Oscar Dimas, Michael Granado, Zakiya Hill, Natalie Kelly, Lori Laubacher, Vince Lewis, Carol Magee, Judith Melendez, Margarita Melgoza, Kenneth Myers, Leanne Olea, Philip Powers, Irene Robles, Willie Sledge, Tracy Smith, Consuelo Vieyra, Sarah Verdugo

FRONT COVER: *Treponema pallidum* (syphilis spirochete)

CONTENTS

Table 1:	Early Syphilis – All Cases	1
Table 2:	Early Syphilis – SPA and Health District of Residence	7
Table 3:	MSM General Demographics	10
Table 4:	General Demographics – Female	13
Table 5:	General Demographics – Heterosexual Men	16
Table 6:	Behavioral Risk Factors by Sexual Orientation	19
Table 7:	Venue Risk by Sexual Orientation	25
Table 8:	HIV and Early Syphilis Co-infection	29
Figure 1:	Early Syphilis by Sexual Orientation and Month of Diagnosis	33
Figure 2:	Primary and Secondary Syphilis by Sexual Orientation and Month of Diagnosis	33
Figure 3:	Primary and Secondary Syphilis by SPA	34
Figure 4:	Early Latent Syphilis by SPA	34
Figure 5:	Primary and Secondary Syphilis by Age Group and Sexual Orientation, Los Angeles County	35
Figure 6:	Early Latent Syphilis by Age Group and Sexual Orientation, Los Angeles County	35
Figure 7:	Primary and Secondary Syphilis by Race/Ethnicity and Sexual Orientation, Los Angeles County	36
Figure 8:	Early latent Syphilis by Race/Ethnicity and Sexual Orientation, Los Angeles County	36
Figure 9:	Early Syphilis by HIV Status and Sexual Orientation, Los Angeles County	37
Figure 10:	Early Syphilis by HIV Status and Sexual Orientation, Los Angeles County	37
Figure 11:	Race/Ethnicity of Early Syphilis Cases Who Frequented Bathhouses or Sex Clubs during the Critical Period, Los Angeles County	38
Figure 12:	Race/Ethnicity of Early Syphilis Cases Who Met Their partners through the Internet during the Critical Period, Los Angeles County	38

Appendix

Appendix A:	Surveillance Notes	39
Appendix B:	Early Syphilis Case Definition for Infectious Conditions under Public Health Surveillance	40
Appendix C:	Where to Report Communicable Diseases in Los Angeles County	42
Appendix D:	Los Angeles County STD Screening Guidelines for Sexually Active HIV Positive Persons	43
Appendix E:	Recommendations to Enhance STD Detection and Improved STD Surveillance	44

Table 1. Early Syphilis - All Cases ¹	2010				2009 (YTD)				2009				2008			
	P&S	Early Latent	Total ES		P&S	Early Latent	Total ES		P&S	Early Latent	Total ES		P&S	Early Latent	Total ES	
	N	N	N	%	N	N	N	%	N	N	N	%	N	N	N	%
Morbidity																
Total	220	317	537	(100.0)	291	381	672	(100.0)	709	962	1671	(100.0)	703	772	1475	(100.0)
Gender																
Male	212	292	504	(93.8)	280	345	625	(93.0)	681	867	1548	(92.6)	675	696	1371	(92.9)
Female	7	25	32	(5.9)	7	32	39	(5.8)	21	89	110	(6.5)	26	73	99	(6.7)
Transgender:F to M	.	.	.	(0.0)	.	.	.	(0.0)	.	.	.	(0.0)	.	.	.	(0.0)
Transgender:M to F	1	.	1	(0.1)	4	4	8	(1.1)	7	6	13	(0.7)	2	3	5	(0.3)
Sexual Orientation²																
MSM	163	210	373	(69.4)	228	262	490	(72.9)	544	666	1210	(72.4)	515	486	1001	(67.8)
MSM/W	15	19	34	(6.3)	9	12	21	(3.1)	32	25	57	(3.4)	34	28	62	(4.2)
MSW	17	27	44	(8.1)	22	32	54	(8.0)	58	86	144	(8.6)	75	82	157	(10.6)
WSM	6	20	26	(4.8)	5	28	33	(4.9)	16	80	96	(5.7)	25	65	90	(6.1)
WSW	.	.	.	(0.0)	1	1	2	(0.2)	1	1	2	(0.1)	.	1	1	(0.0)
WSW/M	1	.	1	(0.1)	.	.	.	(0.0)	1	3	4	(0.2)	.	1	1	(0.0)
TG/STG	1	.	1	(0.1)	5	4	9	(1.3)	8	7	15	(0.8)	2	3	5	(0.3)
Other	.	.	.	(0.0)	.	.	.	(0.0)	.	.	.	(0.0)	.	.	.	(0.0)
Refused	.	3	3	(0.5)	1	1	2	(0.2)	4	2	6	(0.3)	5	4	9	(0.6)
Unknown	17	38	55	(10.2)	20	41	61	(9.0)	45	92	137	(8.1)	47	102	149	(10.1)
HIV Positive³																
Yes	97	200	297	(55.3)	144	217	361	(53.7)	336	565	901	(53.9)	355	451	806	(54.6)
No	113	106	219	(40.7)	133	139	272	(40.4)	345	356	701	(41.9)	303	284	587	(39.7)
Unknown	10	11	21	(3.9)	14	25	39	(5.8)	28	41	69	(4.1)	45	37	82	(5.5)
Race/Ethnicity																
White	62	63	125	(23.2)	103	92	195	(29.0)	250	243	493	(29.5)	212	218	430	(29.1)
African-Amer.	35	54	89	(16.5)	40	58	98	(14.5)	100	164	264	(15.7)	104	124	228	(15.4)
Latina/o	99	171	270	(50.2)	116	185	301	(44.7)	277	466	743	(44.4)	309	372	681	(46.1)
Asian/Pac. Is.	6	10	16	(2.9)	8	14	22	(3.2)	28	33	61	(3.6)	26	14	40	(2.7)
Am.Ind/Alas.Nat.	1	.	1	(0.1)	.	2	2	(0.2)	2	3	5	(0.2)	.	4	4	(0.2)
Other/Mixed	.	2	2	(0.3)	2	4	6	(0.8)	2	6	8	(0.4)	6	2	8	(0.5)
Unknown	17	17	34	(6.3)	22	26	48	(7.1)	50	47	97	(5.8)	46	38	84	(5.6)
Age Group																
<15	.	.	.	(0.0)	.	.	.	(0.0)	1	1	2	(0.1)	.	1	1	(0.0)
15-19	12	9	21	(3.9)	4	10	14	(2.0)	17	22	39	(2.3)	29	22	51	(3.4)
20-24	37	27	64	(11.9)	47	42	89	(13.2)	110	109	219	(13.1)	111	86	197	(13.3)
25-29	37	61	98	(18.2)	61	57	118	(17.5)	139	147	286	(17.1)	118	135	253	(17.1)
30-34	33	52	85	(15.8)	39	55	94	(13.9)	97	136	233	(13.9)	109	85	194	(13.1)
35-39	36	34	70	(13.0)	35	58	93	(13.8)	80	141	221	(13.2)	118	132	250	(16.9)
40-44	33	58	91	(16.9)	46	77	123	(18.3)	111	167	278	(16.6)	103	140	243	(16.4)
45-49	11	35	46	(8.5)	29	41	70	(10.4)	83	111	194	(11.6)	69	88	157	(10.6)
50-54	12	22	34	(6.3)	13	24	37	(5.5)	32	71	103	(6.1)	31	45	76	(5.1)

(Continued)

¹ As of 05/03/04, this report includes syphilis cases with a documented seroconversion or fourfold or greater increase in titer of a nontreponemal test during the previous 12 months (See Appendix A).

² MSM refers to men who have sex with men; MSM/W is men who have sex with men and women; MSW is men who have sex with women; WSM refers to women who have sex with men; WSW is women who have sex with women; WSW/M is women who have sex with women and men. TG/STG refers to male-to-female (M to F) transgenders or to men or women who have sex with M to F transgenders.

³ Self-reported status; Information collected during field interview.

*Excludes Long Beach and Pasadena health jurisdictions.

Table 1. Early Syphilis - All Cases ¹	2007				2006				2005				2004				
	P&S	Early Latent	Total ES		P&S	Early Latent	Total ES		P&S	Early Latent	Total ES		P&S	Early Latent	Total ES		
	N	N	N	%	N	N	N	%	N	N	N	%	N	N	N	%	
Morbidity																	
Total	837	804	1641	(100.0)	785	757	1542	(100.0)	653	580	1233	(100.0)	465	394	859	(100.0)	
Gender																	
Male	784	680	1464	(89.2)	718	638	1356	(87.9)	590	502	1092	(88.5)	427	339	766	(89.1)	
Female	50	120	170	(10.3)	64	113	177	(11.4)	59	77	136	(11.0)	35	55	90	(10.4)	
Transgender:F to M	1	.	1	(0.0)	.	.	.	(0.0)	.	.	.	(0.0)	.	.	.	(0.0)	
Transgender:M to F	2	4	6	(0.3)	3	6	9	(0.5)	4	1	5	(0.4)	3	.	3	(0.3)	
Sexual Orientation²																	
MSM	557	486	1043	(63.5)	496	402	898	(58.2)	415	349	764	(61.9)	312	232	544	(63.3)	
MSM/W	55	20	75	(4.5)	37	18	55	(3.5)	25	23	48	(3.8)	23	16	39	(4.5)	
MSW	106	101	207	(12.6)	105	104	209	(13.5)	76	60	136	(11.0)	61	52	113	(13.1)	
WSM	42	111	153	(9.3)	46	85	131	(8.4)	49	56	105	(8.5)	26	46	72	(8.3)	
WSW	.	.	.	(0.0)	1	.	1	(0.0)	1	2	3	(0.2)	1	.	1	(0.1)	
WSW/M	.	2	2	(0.1)	1	3	4	(0.2)	1	2	3	(0.2)	1	2	3	(0.3)	
TG/STG	3	5	8	(0.4)	3	7	10	(0.6)	4	1	5	(0.4)	3	.	3	(0.3)	
Other	1	.	1	(0.0)	.	.	.	(0.0)	.	.	.	(0.0)	.	.	.	(0.0)	
Refused	2	3	5	(0.3)	7	3	10	(0.6)	3	5	8	(0.6)	1	2	3	(0.3)	
Unknown	71	76	147	(8.9)	89	135	224	(14.5)	79	82	161	(13.0)	37	44	81	(9.4)	
HIV Positive³																	
Yes	372	422	794	(48.3)	337	378	715	(46.3)	261	328	589	(47.7)	207	191	398	(46.3)	
No	355	267	622	(37.9)	265	215	480	(31.1)	256	164	420	(34.0)	168	123	291	(33.8)	
Unknown	110	115	225	(13.7)	183	164	347	(22.5)	136	88	224	(18.1)	90	80	170	(19.7)	
Race/Ethnicity																	
White	279	198	477	(29.0)	296	201	497	(32.2)	257	185	442	(35.8)	194	126	320	(37.2)	
African-Amer.	156	155	311	(18.9)	151	150	301	(19.5)	119	120	239	(19.3)	86	75	161	(18.7)	
Latina/o	339	398	737	(44.9)	277	355	632	(40.9)	226	226	452	(36.6)	152	171	323	(37.6)	
Asian/Pac. Is.	24	26	50	(3.0)	19	11	30	(1.9)	18	19	37	(3.0)	15	11	26	(3.0)	
Am.Ind/Alas.Nat.	.	1	1	(0.0)	1	6	7	(0.4)	1	.	1	(0.0)	2	1	3	(0.3)	
Other/Mixed	4	3	7	(0.4)	2	3	5	(0.3)	2	3	5	(0.4)	2	1	3	(0.3)	
Unknown	35	23	58	(3.5)	39	31	70	(4.5)	30	27	57	(4.6)	14	9	23	(2.6)	
Age Group																	
<15	.	.	.	(0.0)	.	1	1	(0.0)	.	.	.	(0.0)	1	.	1	(0.1)	
15-19	22	28	50	(3.0)	20	19	39	(2.5)	11	17	28	(2.2)	11	11	22	(2.5)	
20-24	114	103	217	(13.2)	69	59	128	(8.3)	66	57	123	(9.9)	48	46	94	(10.9)	
25-29	137	123	260	(15.8)	113	101	214	(13.8)	83	60	143	(11.5)	64	45	109	(12.6)	
30-34	119	126	245	(14.9)	92	95	187	(12.1)	113	86	199	(16.1)	70	59	129	(15.0)	
35-39	133	139	272	(16.5)	180	158	338	(21.9)	127	123	250	(20.2)	99	92	191	(22.2)	
40-44	138	127	265	(16.1)	144	142	286	(18.5)	120	129	249	(20.1)	95	77	172	(20.0)	
45-49	87	73	160	(9.7)	84	92	176	(11.4)	67	53	120	(9.7)	37	32	69	(8.0)	
50-54	48	48	96	(5.8)	47	48	95	(6.1)	32	26	58	(4.7)	21	20	41	(4.7)	

(Continued)

¹ As of 05/03/04, this report includes syphilis cases with a documented seroconversion or fourfold or greater increase in titer of a nontreponemal test during the previous 12 months (See Appendix A).

² MSM refers to men who have sex with men; MSM/W is men who have sex with men and women; MSW is men who have sex with women; WSM refers to women who have sex with men; WSW is women who have sex with women; WSW/M is women who have sex with women and men. TG/STG refers to male-to-female (M to F) transgenders or to men or women who have sex with M to F transgenders.

³ Self-reported status; Information collected during field interview.

*Excludes Long Beach and Pasadena health jurisdictions.

Table 1. Early Syphilis - All Cases ¹	2003				2002				2001			
	P&S	Early Latent	Total ES		P&S	Early Latent	Total ES		P&S	Early Latent	Total ES	
	N	N	N	%	N	N	N	%	N	N	N	%
Morbidity												
Total	458	382	840	(100.0)	368	355	723	(100.0)	199	224	423	(100.0)
Gender												
Male	432	325	757	(90.1)	350	309	659	(91.1)	185	166	351	(82.9)
Female	25	55	80	(9.5)	18	46	64	(8.8)	12	57	69	(16.3)
Transgender:F to M	.	.	.	(0.0)	.	.	.	(0.0)	.	.	.	(0.0)
Transgender:M to F	1	2	3	(0.3)	.	.	.	(0.0)	2	1	3	(0.7)
Sexual Orientation²												
MSM	322	213	535	(63.6)	269	214	483	(66.8)	125	85	210	(49.6)
MSM/W	28	13	41	(4.8)	25	13	38	(5.2)	10	5	15	(3.5)
MSW	42	40	82	(9.7)	30	40	70	(9.6)	30	43	73	(17.2)
WSM	21	45	66	(7.8)	17	39	56	(7.7)	8	47	55	(13.0)
WSW	1	1	2	(0.2)	.	.	.	(0.0)	.	2	2	(0.4)
WSW/M	.	.	.	(0.0)	.	.	.	(0.0)	.	1	1	(0.2)
TG/STG	1	2	3	(0.3)	.	.	.	(0.0)	2	1	3	(0.7)
Other	.	.	.	(0.0)	.	.	.	(0.0)	.	.	.	(0.0)
Refused	1	.	1	(0.1)	2	1	3	(0.4)	4	6	10	(2.3)
Unknown	42	68	110	(13.0)	25	48	73	(10.0)	20	34	54	(12.7)
HIV Positive³												
Yes	203	167	370	(44.0)	185	153	338	(46.7)	.	.	.	(0.0)
No	169	126	295	(35.1)	127	108	235	(32.5)	.	.	.	(0.0)
Unknown	86	89	175	(20.8)	56	94	150	(20.7)	199	224	423	(100.0)
Race/Ethnicity												
White	223	115	338	(40.2)	171	109	280	(38.7)	69	43	112	(26.4)
African-Amer.	60	60	120	(14.2)	53	51	104	(14.3)	41	31	72	(17.0)
Latina/o	144	179	323	(38.4)	117	170	287	(39.6)	77	136	213	(50.3)
Asian/Pac. Is.	13	14	27	(3.2)	13	11	24	(3.3)	8	5	13	(3.0)
Am.Ind/Alas.Nat.	1	1	2	(0.2)	1	3	4	(0.5)	.	1	1	(0.2)
Other/Mixed	.	.	.	(0.0)	.	.	.	(0.0)	1	.	1	(0.2)
Unknown	17	13	30	(3.5)	13	11	24	(3.3)	3	8	11	(2.6)
Age Group												
<15	.	.	.	(0.0)	1	.	1	(0.1)	.	3	3	(0.7)
15-19	6	12	18	(2.1)	6	14	20	(2.7)	7	9	16	(3.7)
20-24	37	36	73	(8.6)	31	43	74	(10.2)	19	18	37	(8.7)
25-29	48	48	96	(11.4)	42	43	85	(11.7)	28	33	61	(14.4)
30-34	77	64	141	(16.7)	71	65	136	(18.8)	43	52	95	(22.4)
35-39	121	92	213	(25.3)	87	71	158	(21.8)	48	54	102	(24.1)
40-44	84	61	145	(17.2)	62	60	122	(16.8)	27	27	54	(12.7)
45-49	45	35	80	(9.5)	39	31	70	(9.6)	17	13	30	(7.0)
50-54	25	21	46	(5.4)	19	17	36	(4.9)	6	6	12	(2.8)

(Continued)

¹ As of 05/03/04, this report includes syphilis cases with a documented seroconversion or fourfold or greater increase in titer of a nontreponemal test during the previous 12 months (See Appendix A).

² MSM refers to men who have sex with men; MSM/W is men who have sex with men and women; MSW is men who have sex with women; WSM refers to women who have sex with men; WSW is women who have sex with women; WSW/M is women who have sex with women and men. TG/STG refers to male-to-female (M to F) transgenders or to men or women who have sex with M to F transgenders.

³ Self-reported status; Information collected during field interview.

*Excludes Long Beach and Pasadena health jurisdictions.

Table 1. Early Syphilis - All Cases ¹	2010				2009 (YTD)				2009				2008			
	P&S		Early Latent		P&S		Early Latent		P&S		Early Latent		P&S		Early Latent	
	N		%		N		%		N		%		N		%	
	N	N	N	%	N	N	N	%	N	N	N	%	N	N	N	%
Age Group																
55-59	5	10	15	(2.7)	13	10	23	(3.4)	28	30	58	(3.4)	10	19	29	(1.9)
60+	4	9	13	(2.4)	4	7	11	(1.6)	11	27	38	(2.2)	5	19	24	(1.6)

¹ As of 05/03/04, this report includes syphilis cases with a documented seroconversion or fourfold or greater increase in titer of a nontreponemal test during the previous 12 months (See Appendix A).

² MSM refers to men who have sex with men; MSM/W is men who have sex with men and women; MSW is men who have sex with women; WSM refers to women who have sex with men; WSW is women who have sex with women; WSW/M is women who have sex with women and men. TG/STG refers to male-to-female (M to F) transgenders or to men or women who have sex with M to F transgenders.

³ Self-reported status; Information collected during field interview.

*Excludes Long Beach and Pasadena health jurisdictions.

Table 1. Early Syphilis - All Cases ¹	2007				2006				2005				2004			
	P&S		Early Latent		P&S		Early Latent		P&S		Early Latent		P&S		Early Latent	
	N		N		N		N		N		N		N		N	
	N		%		N		%		N		%		N		%	
Age Group																
55-59	26	19	45	(2.7)	16	22	38	(2.4)	19	14	33	(2.6)	12	3	15	(1.7)
60 +	13	18	31	(1.8)	20	20	40	(2.5)	15	15	30	(2.4)	7	9	16	(1.8)

¹ As of 05/03/04, this report includes syphilis cases with a documented seroconversion or fourfold or greater increase in titer of a nontreponemal test during the previous 12 months (See Appendix A).

² MSM refers to men who have sex with men; MSM/W is men who have sex with men and women; MSW is men who have sex with women; WSM refers to women who have sex with men; WSW is women who have sex with women; WSW/M is women who have sex with women and men. TG/STG refers to male-to-female (M to F) transgenders or to men or women who have sex with M to F transgenders.

³ Self-reported status; Information collected during field interview.

*Excludes Long Beach and Pasadena health jurisdictions.

Table 1. Early Syphilis - All Cases ¹	2003				2002				2001			
	P&S	Early Latent	Total ES		P&S	Early Latent	Total ES		P&S	Early Latent	Total ES	
	N	N	N	%	N	N	N	%	N	N	N	%
Age Group												
55-59	11	8	19	(2.2)	5	8	13	(1.7)	1	6	7	(1.6)
60 +	4	5	9	(1.0)	5	3	8	(1.1)	3	3	6	(1.4)

¹ As of 05/03/04, this report includes syphilis cases with a documented seroconversion or fourfold or greater increase in titer of a nontreponemal test during the previous 12 months (See Appendix A).

² MSM refers to men who have sex with men; MSM/W is men who have sex with men and women; MSW is men who have sex with women; WSM refers to women who have sex with men; WSW is women who have sex with women; WSW/M is women who have sex with women and men. TG/STG refers to male-to-female (M to F) transgenders or to men or women who have sex with M to F transgenders.

³ Self-reported status; Information collected during field interview.

*Excludes Long Beach and Pasadena health jurisdictions.

Table 2. Early Syphilis - SPA and Health District of Residence		2010				2009 (YTD)				2009				2008					
		P&S		Early Latent		Total ES		P&S		Early Latent		Total ES		P&S		Early Latent		Total ES	
		N	N	N	%	N	N	N	%	N	N	N	%	N	N	N	%		
SPA	District																		
SPA 1 - ANTELOPE VALLEY	Antelope Valley	1	2	3	(0.5)	3	.	3	(0.4)	5	5	10	(0.5)	.	7	7	(0.4)		
	SPA Total	1	2	3	(0.5)	3	.	3	(0.4)	5	5	10	(0.5)	.	7	7	(0.4)		
SPA 2 - SAN FERNANDO VALLEY	District																		
	East Valley	12	17	29	(5.4)	18	26	44	(6.5)	35	52	87	(5.2)	38	39	77	(5.2)		
	Glendale	10	5	15	(2.7)	10	5	15	(2.2)	16	19	35	(2.0)	21	19	40	(2.7)		
	San Fernando	6	5	11	(2.0)	2	4	6	(0.8)	11	14	25	(1.4)	22	9	31	(2.1)		
	West Valley	9	10	19	(3.5)	19	22	41	(6.1)	50	46	96	(5.7)	38	43	81	(5.4)		
	SPA Total	37	37	74	(13.7)	49	57	106	(15.7)	112	131	243	(14.5)	119	110	229	(15.5)		
SPA 3 - SAN GABRIEL	District																		
	Alhambra	1	8	9	(1.6)	4	3	7	(1.0)	14	5	19	(1.1)	8	4	12	(0.8)		
	El Monte	4	7	11	(2.0)	8	5	13	(1.9)	16	13	29	(1.7)	20	24	44	(2.9)		
	Foothill	2	3	5	(0.9)	2	5	7	(1.0)	8	12	20	(1.1)	13	6	19	(1.2)		
	Pomona	3	9	12	(2.2)	9	9	18	(2.6)	15	25	40	(2.3)	21	19	40	(2.7)		
	SPA Total	10	27	37	(6.8)	23	22	45	(6.6)	53	55	108	(6.4)	62	53	115	(7.7)		
SPA 4 - METRO	District																		
	Central	21	42	63	(11.7)	28	38	66	(9.8)	64	104	168	(10.0)	68	89	157	(10.6)		
	Northeast	11	14	25	(4.6)	7	12	19	(2.8)	28	36	64	(3.8)	20	34	54	(3.6)		
	Hollywood-Wilshire	54	72	126	(23.4)	80	108	188	(27.9)	198	277	475	(28.4)	192	211	403	(27.3)		
	SPA Total	86	128	214	(39.8)	115	158	273	(40.6)	290	417	707	(42.3)	280	334	614	(41.6)		
SPA 5 - WEST	District																		
	West	17	23	40	(7.4)	22	16	38	(5.6)	51	46	97	(5.8)	33	37	70	(4.7)		
	SPA Total	17	23	40	(7.4)	22	16	38	(5.6)	51	46	97	(5.8)	33	37	70	(4.7)		
SPA 6 - SOUTH	District																		
	Compton	4	6	10	(1.8)	3	12	15	(2.2)	13	25	38	(2.2)	21	15	36	(2.4)		
	South	4	9	13	(2.4)	3	12	15	(2.2)	12	22	34	(2.0)	12	11	23	(1.5)		
	Southeast	4	5	9	(1.6)	3	6	9	(1.3)	7	18	25	(1.4)	14	17	31	(2.1)		
	Southwest	12	22	34	(6.3)	12	17	29	(4.3)	28	57	85	(5.0)	43	41	84	(5.6)		
	SPA Total	24	42	66	(12.2)	21	47	68	(10.1)	60	122	182	(10.8)	90	84	174	(11.7)		
SPA 7 - EAST	District																		
	East Los Angeles	3	7	10	(1.8)	3	8	11	(1.6)	14	19	33	(1.9)	6	10	16	(1.0)		
	Whittier	5	5	10	(1.8)	9	10	19	(2.8)	17	19	36	(2.1)	18	18	36	(2.4)		
	Bellflower	4	1	5	(0.9)	10	13	23	(3.4)	18	25	43	(2.5)	21	11	32	(2.1)		
	San Antonio	11	14	25	(4.6)	5	10	15	(2.2)	17	24	41	(2.4)	18	25	43	(2.9)		
	SPA Total	23	27	50	(9.3)	27	41	68	(10.1)	66	87	153	(9.1)	63	64	127	(8.6)		
SPA 8 - SOUTH BAY	District																		
	Harbor	2	5	7	(1.3)	1	5	6	(0.8)	1	9	10	(0.5)	6	12	18	(1.2)		
	Inglewood	11	12	23	(4.2)	15	12	27	(4.0)	31	35	66	(3.9)	18	35	53	(3.5)		
	Torrance	.	7	7	(1.3)	5	3	8	(1.1)	12	14	26	(1.5)	10	10	20	(1.3)		
	SPA Total	13	24	37	(6.8)	21	20	41	(6.1)	44	58	102	(6.1)	34	57	91	(6.1)		
UNKNOWN SPA	District																		
	Other/Unknown	9	7	16	(2.9)	10	20	30	(4.4)	28	41	69	(4.1)	22	26	48	(3.2)		
	SPA Total	9	7	16	(2.9)	10	20	30	(4.4)	28	41	69	(4.1)	22	26	48	(3.2)		

*Excludes Long Beach and Pasadena health jurisdictions.

Table 2. Early Syphilis - SPA and Health District of Residence		2007				2006				2005				2004			
		P&S	Early Latent	Total ES		P&S	Early Latent	Total ES		P&S	Early Latent	Total ES		P&S	Early Latent	Total ES	
		N	N	N	%	N	N	N	%	N	N	N	%	N	N	N	%
SPA	District																
SPA 1 - ANTELOPE VALLEY	Antelope Valley	9	7	16	(0.9)	8	6	14	(0.9)	7	4	11	(0.8)	3	1	4	(0.4)
	SPA Total	9	7	16	(0.9)	8	6	14	(0.9)	7	4	11	(0.8)	3	1	4	(0.4)
SPA 2 - SAN FERNANDO VALLEY	District																
	East Valley	47	26	73	(4.4)	47	38	85	(5.5)	41	33	74	(6.0)	26	21	47	(5.4)
	Glendale	17	17	34	(2.0)	16	4	20	(1.2)	17	10	27	(2.1)	4	7	11	(1.2)
	San Fernando	19	14	33	(2.0)	7	12	19	(1.2)	5	6	11	(0.8)	5	9	14	(1.6)
	West Valley	45	44	89	(5.4)	47	41	88	(5.7)	33	35	68	(5.5)	21	24	45	(5.2)
	SPA Total	128	101	229	(13.9)	117	95	212	(13.7)	96	84	180	(14.5)	56	61	117	(13.6)
SPA 3 - SAN GABRIEL	District																
	Alhambra	7	6	13	(0.7)	8	4	12	(0.7)	9	4	13	(1.0)	4	2	6	(0.6)
	El Monte	10	16	26	(1.5)	14	12	26	(1.6)	6	13	19	(1.5)	9	6	15	(1.7)
	Foothill	7	3	10	(0.6)	7	11	18	(1.1)	5	3	8	(0.6)	3	9	12	(1.3)
	Pomona	17	17	34	(2.0)	13	12	25	(1.6)	8	5	13	(1.0)	9	7	16	(1.8)
	SPA Total	41	42	83	(5.0)	42	39	81	(5.2)	28	25	53	(4.2)	25	24	49	(5.7)
SPA 4 - METRO	District																
	Central	104	96	200	(12.1)	100	111	211	(13.6)	72	72	144	(11.6)	41	48	89	(10.3)
	Northeast	38	33	71	(4.3)	30	26	56	(3.6)	22	20	42	(3.4)	9	14	23	(2.6)
	Hollywood-Wilshire	229	211	440	(26.8)	213	195	408	(26.4)	207	166	373	(30.2)	169	111	280	(32.5)
	SPA Total	371	340	711	(43.3)	343	332	675	(43.7)	301	258	559	(45.3)	219	173	392	(45.6)
SPA 5 - WEST	District																
	West	44	26	70	(4.2)	48	24	72	(4.6)	34	26	60	(4.8)	30	16	46	(5.3)
	SPA Total	44	26	70	(4.2)	48	24	72	(4.6)	34	26	60	(4.8)	30	16	46	(5.3)
SPA 6 - SOUTH	District																
	Compton	15	15	30	(1.8)	12	14	26	(1.6)	9	6	15	(1.2)	12	9	21	(2.4)
	South	16	30	46	(2.8)	15	18	33	(2.1)	16	13	29	(2.3)	9	6	15	(1.7)
	Southeast	15	21	36	(2.1)	13	17	30	(1.9)	10	6	16	(1.2)	6	9	15	(1.7)
	Southwest	41	52	93	(5.6)	50	44	94	(6.0)	46	44	90	(7.2)	25	25	50	(5.8)
	SPA Total	87	118	205	(12.4)	90	93	183	(11.8)	81	69	150	(12.1)	52	49	101	(11.7)
SPA 7 - EAST	District																
	East Los Angeles	7	13	20	(1.2)	10	13	23	(1.4)	7	10	17	(1.3)	6	10	16	(1.8)
	Whittier	19	12	31	(1.8)	6	20	26	(1.6)	8	2	10	(0.8)	7	6	13	(1.5)
	Bellflower	22	13	35	(2.1)	9	14	23	(1.4)	7	8	15	(1.2)	10	5	15	(1.7)
	San Antonio	25	28	53	(3.2)	19	21	40	(2.5)	23	18	41	(3.3)	14	12	26	(3.0)
	SPA Total	73	66	139	(8.4)	44	68	112	(7.2)	45	38	83	(6.7)	37	33	70	(8.1)
SPA 8 - SOUTH BAY	District																
	Harbor	3	13	16	(0.9)	6	5	11	(0.7)	8	5	13	(1.0)	3	6	9	(1.0)
	Inglewood	29	38	67	(4.0)	24	41	65	(4.2)	20	35	55	(4.4)	9	14	23	(2.6)
	Torrance	12	13	25	(1.5)	14	4	18	(1.1)	10	6	16	(1.2)	6	9	15	(1.7)
	SPA Total	44	64	108	(6.5)	44	50	94	(6.0)	38	46	84	(6.8)	18	29	47	(5.4)
UNKNOWN SPA	District																
	Other/Unknown	40	40	80	(4.8)	49	50	99	(6.4)	23	30	53	(4.2)	25	8	33	(3.8)
	SPA Total	40	40	80	(4.8)	49	50	99	(6.4)	23	30	53	(4.2)	25	8	33	(3.8)

*Excludes Long Beach and Pasadena health jurisdictions.

Table 2. Early Syphilis - SPA and Health District of Residence		2003				2002				2001			
		P&S	Early Latent	Total ES		P&S	Early Latent	Total ES		P&S	Early Latent	Total ES	
		N	N	N	%	N	N	N	%	N	N	N	%
SPA	District												
SPA 1 - ANTELOPE VALLEY	Antelope Valley	3	2	5	(0.5)	3	4	7	(0.9)	1	.	1	(0.2)
	SPA Total	3	2	5	(0.5)	3	4	7	(0.9)	1	.	1	(0.2)
SPA 2 - SAN FERNANDO VALLEY	District												
	East Valley	32	15	47	(5.5)	19	16	35	(4.8)	11	7	18	(4.2)
	Glendale	1	10	11	(1.3)	6	7	13	(1.7)	3	5	8	(1.8)
	San Fernando	9	12	21	(2.5)	4	9	13	(1.7)	2	4	6	(1.4)
	West Valley	29	22	51	(6.0)	14	15	29	(4.0)	10	7	17	(4.0)
	SPA Total	71	59	130	(15.4)	43	47	90	(12.4)	26	23	49	(11.5)
SPA 3 - SAN GABRIEL	District												
	Alhambra	2	3	5	(0.5)	4	4	8	(1.1)	1	2	3	(0.7)
	El Monte	2	7	9	(1.0)	3	7	10	(1.3)	4	10	14	(3.3)
	Foothill	5	4	9	(1.0)	3	.	3	(0.4)	2	1	3	(0.7)
	Pomona	12	8	20	(2.3)	5	6	11	(1.5)	5	10	15	(3.5)
	SPA Total	21	22	43	(5.1)	15	17	32	(4.4)	12	23	35	(8.2)
SPA 4 - METRO	District												
	Central	52	40	92	(10.9)	44	60	104	(14.3)	24	30	54	(12.7)
	Northeast	10	17	27	(3.2)	6	18	24	(3.3)	12	13	25	(5.9)
	Hollywood-Wilshire	167	118	285	(33.9)	155	104	259	(35.8)	50	44	94	(22.2)
	SPA Total	229	175	404	(48.0)	205	182	387	(53.5)	86	87	173	(40.8)
SPA 5 - WEST	District												
	West	33	21	54	(6.4)	24	15	39	(5.3)	12	6	18	(4.2)
	SPA Total	33	21	54	(6.4)	24	15	39	(5.3)	12	6	18	(4.2)
SPA 6 - SOUTH	District												
	Compton	8	5	13	(1.5)	5	7	12	(1.6)	5	10	15	(3.5)
	South	6	7	13	(1.5)	2	10	12	(1.6)	1	3	4	(0.9)
	Southeast	9	11	20	(2.3)	5	6	11	(1.5)	7	4	11	(2.6)
	Southwest	19	24	43	(5.1)	16	15	31	(4.2)	11	13	24	(5.6)
	SPA Total	42	47	89	(10.5)	28	38	66	(9.1)	24	30	54	(12.7)
SPA 7 - EAST	District												
	East Los Angeles	7	3	10	(1.1)	4	1	5	(0.6)	4	6	10	(2.3)
	Whittier	3	1	4	(0.4)	3	7	10	(1.3)	5	2	7	(1.6)
	Bellflower	11	2	13	(1.5)	5	3	8	(1.1)	3	8	11	(2.6)
	San Antonio	8	8	16	(1.9)	6	8	14	(1.9)	3	12	15	(3.5)
	SPA Total	29	14	43	(5.1)	18	19	37	(5.1)	15	28	43	(10.1)
SPA 8 - SOUTH BAY	District												
	Harbor	2	3	5	(0.5)	3	7	10	(1.3)	1	1	2	(0.4)
	Inglewood	7	14	21	(2.5)	16	11	27	(3.7)	7	7	14	(3.3)
	Torrance	8	5	13	(1.5)	8	4	12	(1.6)	4	3	7	(1.6)
	SPA Total	17	22	39	(4.6)	27	22	49	(6.7)	12	11	23	(5.4)
UNKNOWN SPA	District												
	Other/Unknown	13	20	33	(3.9)	5	11	16	(2.2)	11	16	27	(6.3)
	SPA Total	13	20	33	(3.9)	5	11	16	(2.2)	11	16	27	(6.3)

*Excludes Long Beach and Pasadena health jurisdictions.

Table 3. MSM General Demographics ¹	2010				2009 (YTD)				2009				2008			
	P&S		Early Latent		P&S		Early Latent		P&S		Early Latent		P&S		Early Latent	
	N		N		N		N		N		N		N		N	
	%		%		%		%		%		%		%		%	
Morbidity																
Total	179	229	408	(100.0)	242	278	520	(100.0)	584	698	1282	(100.0)	551	517	1068	(100.0)
Sexual Orientation¹																
MSM	163	210	373	(91.4)	228	262	490	(94.2)	544	666	1210	(94.3)	515	486	1001	(93.7)
MSM/W	15	19	34	(8.3)	9	12	21	(4.0)	32	25	57	(4.4)	34	28	62	(5.8)
TG/STG	1	.	1	(0.2)	5	4	9	(1.7)	8	7	15	(1.1)	2	3	5	(0.4)
HIV Positive²																
Yes	88	159	247	(60.5)	126	187	313	(60.1)	301	490	791	(61.7)	314	362	676	(63.2)
No	85	65	150	(36.7)	106	81	187	(35.9)	267	195	462	(36.0)	218	141	359	(33.6)
Unknown	6	5	11	(2.6)	10	10	20	(3.8)	16	13	29	(2.2)	19	14	33	(3.0)
Race/Ethnicity																
White	53	49	102	(25.0)	90	78	168	(32.3)	218	205	423	(32.9)	189	175	364	(34.0)
African-Amer.	26	29	55	(13.4)	27	36	63	(12.1)	71	91	162	(12.6)	65	69	134	(12.5)
Latina/o	82	133	215	(52.6)	94	131	225	(43.2)	229	337	566	(44.1)	240	242	482	(45.1)
Asian/Pac. Is.	6	9	15	(3.6)	8	11	19	(3.6)	25	26	51	(3.9)	20	11	31	(2.9)
Am.Ind/Alas.Nat.	1	.	1	(0.2)	.	2	2	(0.3)	1	3	4	(0.3)	.	3	3	(0.2)
Other/Mixed	.	1	1	(0.2)	2	3	5	(0.9)	2	5	7	(0.5)	5	2	7	(0.6)
Unknown	11	8	19	(4.6)	21	17	38	(7.3)	38	31	69	(5.3)	32	15	47	(4.4)
Age Group																
<15	.	.	.	(0.0)	.	.	.	(0.0)	.	.	.	(0.0)	.	1	1	(0.0)
15-19	7	4	11	(2.6)	2	8	10	(1.9)	12	15	27	(2.1)	21	10	31	(2.9)
20-24	31	22	53	(12.9)	38	33	71	(13.6)	87	74	161	(12.5)	80	55	135	(12.6)
25-29	32	47	79	(19.3)	53	43	96	(18.4)	120	110	230	(17.9)	98	94	192	(17.9)
30-34	27	37	64	(15.6)	33	40	73	(14.0)	82	103	185	(14.4)	91	51	142	(13.2)
35-39	26	27	53	(12.9)	29	42	71	(13.6)	70	105	175	(13.6)	94	89	183	(17.1)
40-44	32	46	78	(19.1)	35	58	93	(17.8)	85	130	215	(16.7)	82	102	184	(17.2)
45-49	11	25	36	(8.8)	26	28	54	(10.3)	69	84	153	(11.9)	54	59	113	(10.5)
50-54	7	12	19	(4.6)	10	16	26	(5.0)	25	47	72	(5.6)	23	34	57	(5.3)
55-59	4	6	10	(2.4)	12	7	19	(3.6)	24	20	44	(3.4)	7	10	17	(1.5)
60+	2	3	5	(1.2)	4	3	7	(1.3)	10	10	20	(1.5)	1	12	13	(1.2)

¹ MSM refers to men who have sex with men; MSM/W is men who have sex with men and women; MSW is men who have sex with women
MSM includes gay and bisexual men, M to F transgenders, and men who have sex with M to F transgenders; TG/STG refers to male-to-female (M to F) transgenders or to men or women who have sex with M to F transgenders.

² Self-reported status; Information collected during field interview.

*Excludes Long Beach and Pasadena health jurisdictions.

Table 3. MSM General Demographics ¹	2007				2006				2005				2004			
	P&S	Early Latent	Total ES		P&S	Early Latent	Total ES		P&S	Early Latent	Total ES		P&S	Early Latent	Total ES	
	N	N	N	%	N	N	N	%	N	N	N	%	N	N	N	%
Morbidity																
Total	615	511	1126	(100.0)	536	427	963	(100.0)	444	373	817	(100.0)	338	248	586	(100.0)
Sexual Orientation¹																
MSM	557	486	1043	(92.6)	496	402	898	(93.2)	415	349	764	(93.5)	312	232	544	(92.8)
MSM/W	55	20	75	(6.6)	37	18	55	(5.7)	25	23	48	(5.8)	23	16	39	(6.6)
TG/STG	3	5	8	(0.7)	3	7	10	(1.0)	4	1	5	(0.6)	3	.	3	(0.5)
HIV Positive²																
Yes	340	361	701	(62.2)	302	306	608	(63.1)	238	274	512	(62.6)	197	170	367	(62.6)
No	232	116	348	(30.9)	144	79	223	(23.1)	154	75	229	(28.0)	95	57	152	(25.9)
Unknown	43	34	77	(6.8)	90	42	132	(13.7)	52	24	76	(9.3)	46	21	67	(11.4)
Race/Ethnicity																
White	234	155	389	(34.5)	239	144	383	(39.7)	218	145	363	(44.4)	169	111	280	(47.7)
African-Amer.	85	69	154	(13.6)	66	57	123	(12.7)	35	60	95	(11.6)	40	27	67	(11.4)
Latina/o	253	256	509	(45.2)	189	199	388	(40.2)	156	142	298	(36.4)	109	99	208	(35.4)
Asian/Pac. Is.	19	18	37	(3.2)	16	7	23	(2.3)	16	16	32	(3.9)	10	6	16	(2.7)
Am.Ind/Alas.Nat.	.	.	.	(0.0)	.	3	3	(0.3)	1	.	1	(0.1)	2	1	3	(0.5)
Other/Mixed	3	3	6	(0.5)	1	1	2	(0.2)	2	1	3	(0.3)	1	.	1	(0.1)
Unknown	21	10	31	(2.7)	25	16	41	(4.2)	16	9	25	(3.0)	7	4	11	(1.8)
Age Group																
<15	.	.	.	(0.0)	.	.	.	(0.0)	.	.	.	(0.0)	.	.	.	(0.0)
15-19	9	15	24	(2.1)	8	7	15	(1.5)	4	4	8	(0.9)	3	2	5	(0.8)
20-24	86	61	147	(13.0)	49	33	82	(8.5)	41	27	68	(8.3)	34	29	63	(10.7)
25-29	110	70	180	(15.9)	87	57	144	(14.9)	56	33	89	(10.8)	37	20	57	(9.7)
30-34	80	84	164	(14.5)	64	56	120	(12.4)	78	61	139	(17.0)	57	40	97	(16.5)
35-39	107	99	206	(18.2)	133	103	236	(24.5)	98	83	181	(22.1)	83	69	152	(25.9)
40-44	106	86	192	(17.0)	102	83	185	(19.2)	82	93	175	(21.4)	71	54	125	(21.3)
45-49	60	52	112	(9.9)	52	45	97	(10.0)	45	36	81	(9.9)	27	17	44	(7.5)
50-54	35	29	64	(5.6)	25	28	53	(5.5)	20	19	39	(4.7)	14	12	26	(4.4)
55-59	13	10	23	(2.0)	8	8	16	(1.6)	12	11	23	(2.8)	7	2	9	(1.5)
60 +	9	5	14	(1.2)	8	7	15	(1.5)	8	6	14	(1.7)	5	3	8	(1.3)

¹ MSM refers to men who have sex with men; MSM/W is men who have sex with men and women; MSW is men who have sex with women
MSM includes gay and bisexual men, M to F transgenders, and men who have sex with M to F transgenders; TG/STG refers to male-to-female (M to F) transgenders or to men or women who have sex with M to F transgenders.

² Self-reported status; Information collected during field interview.

*Excludes Long Beach and Pasadena health jurisdictions.

Table 3. MSM General Demographics ¹	2003				2002				2001			
	P&S	Early Latent	Total ES		P&S	Early Latent	Total ES		P&S	Early Latent	Total ES	
	N	N	N	%	N	N	N	%	N	N	N	%
Morbidity												
Total	351	228	579	(100.0)	294	227	521	(100.0)	137	91	228	(100.0)
Sexual Orientation¹												
MSM	322	213	535	(92.4)	269	214	483	(92.7)	125	85	210	(92.1)
MSM/W	28	13	41	(7.0)	25	13	38	(7.2)	10	5	15	(6.5)
TG/STG	1	2	3	(0.5)	.	.	.	(0.0)	2	1	3	(1.3)
HIV Positive²												
Yes	189	150	339	(58.5)	171	136	307	(58.9)	.	.	.	(0.0)
No	115	52	167	(28.8)	91	53	144	(27.6)	.	.	.	(0.0)
Unknown	47	26	73	(12.6)	32	38	70	(13.4)	137	91	228	(100.0)
Race/Ethnicity												
White	201	94	295	(50.9)	152	92	244	(46.8)	59	26	85	(37.2)
African-Amer.	32	25	57	(9.8)	32	23	55	(10.5)	20	9	29	(12.7)
Latina/o	101	98	199	(34.3)	92	98	190	(36.4)	52	47	99	(43.4)
Asian/Pac. Is.	9	6	15	(2.5)	10	6	16	(3.0)	5	4	9	(3.9)
Am.Ind/Alas.Nat.	.	1	1	(0.1)	1	2	3	(0.5)	.	1	1	(0.4)
Other/Mixed	.	.	.	(0.0)	.	.	.	(0.0)	1	.	1	(0.4)
Unknown	8	4	12	(2.0)	7	6	13	(2.4)	.	4	4	(1.7)
Age Group												
<15	.	.	.	(0.0)	1	.	1	(0.1)	.	.	.	(0.0)
15-19	2	2	4	(0.6)	3	7	10	(1.9)	4	1	5	(2.1)
20-24	26	19	45	(7.7)	24	20	44	(8.4)	13	5	18	(7.8)
25-29	34	27	61	(10.5)	36	24	60	(11.5)	21	14	35	(15.3)
30-34	60	38	98	(16.9)	59	49	108	(20.7)	26	22	48	(21.0)
35-39	100	61	161	(27.8)	72	52	124	(23.8)	38	23	61	(26.7)
40-44	67	38	105	(18.1)	54	42	96	(18.4)	20	16	36	(15.7)
45-49	34	24	58	(10.0)	26	15	41	(7.8)	9	4	13	(5.7)
50-54	19	14	33	(5.6)	12	13	25	(4.7)	5	2	7	(3.0)
55-59	8	4	12	(2.0)	4	4	8	(1.5)	1	3	4	(1.7)
60+	1	1	2	(0.3)	3	1	4	(0.7)	.	1	1	(0.4)

¹ MSM refers to men who have sex with men; MSM/W is men who have sex with men and women; MSW is men who have sex with women
MSM includes gay and bisexual men, M to F transgenders, and men who have sex with M to F transgenders; TG/STG refers to male-to-female (M to F) transgenders or to men or women who have sex with M to F transgenders.

² Self-reported status; Information collected during field interview.

*Excludes Long Beach and Pasadena health jurisdictions.

Table 4. General Demographics - Female	2010				2009 (YTD)				2009				2008				
	P&S	Early Latent		Total ES	P&S	Early Latent		Total ES	P&S	Early Latent		Total ES	P&S	Early Latent		Total ES	
		N	N	N		%	N	N		N	%	N		N	N	%	N
	Morbidity																
Total	7	25	32	(100.0)	7	32	39	(100.0)	21	89	110	(100.0)	26	73	99	(100.0)	
Sexual Orientation¹																	
WSM	6	20	26	(81.2)	5	28	33	(84.6)	16	80	96	(87.2)	25	65	90	(90.9)	
WSW	.	.	.	(0.0)	1	1	2	(5.1)	1	1	2	(1.8)	.	1	1	(1.0)	
WSW/M	1	.	1	(3.1)	.	.	.	(0.0)	1	3	4	(3.6)	.	1	1	(1.0)	
Unknown	.	5	5	(15.6)	1	3	4	(10.2)	3	5	8	(7.2)	1	6	7	(7.0)	
HIV Positive²																	
Yes	1	3	4	(12.5)	2	3	5	(12.8)	2	7	9	(8.1)	.	6	6	(6.0)	
No	6	19	25	(78.1)	3	24	27	(69.2)	15	72	87	(79.0)	22	59	81	(81.8)	
Unknown	.	3	3	(9.3)	2	5	7	(17.9)	4	10	14	(12.7)	4	8	12	(12.1)	
Race/Ethnicity																	
White	1	.	1	(3.1)	.	4	4	(10.2)	2	8	10	(9.0)	4	3	7	(7.0)	
African-Amer.	3	10	13	(40.6)	3	6	9	(23.0)	6	27	33	(30.0)	8	19	27	(27.2)	
Latina/o	3	13	16	(50.0)	3	21	24	(61.5)	10	50	60	(54.5)	12	48	60	(60.6)	
Asian/Pac. Is.	.	1	1	(3.1)	.	1	1	(2.5)	.	2	2	(1.8)	1	1	2	(2.0)	
Am.Ind/Alas.Nat.	.	.	.	(0.0)	.	.	.	(0.0)	.	.	.	(0.0)	.	.	.	(0.0)	
Other/Mixed	.	.	.	(0.0)	.	.	.	(0.0)	.	.	.	(0.0)	.	.	.	(0.0)	
Unknown	.	1	1	(3.1)	1	.	1	(2.5)	3	2	5	(4.5)	1	2	3	(3.0)	
Age Group																	
<15	.	.	.	(0.0)	.	.	.	(0.0)	.	.	.	(0.0)	.	.	.	(0.0)	
15-19	.	3	3	(9.3)	1	1	2	(5.1)	1	6	7	(6.3)	2	9	11	(11.1)	
20-24	.	2	2	(6.2)	1	5	6	(15.3)	4	13	17	(15.4)	9	16	25	(25.2)	
25-29	1	3	4	(12.5)	1	6	7	(17.9)	3	18	21	(19.0)	4	16	20	(20.2)	
30-34	1	6	7	(21.8)	2	1	3	(7.6)	3	8	11	(10.0)	2	9	11	(11.1)	
35-39	3	1	4	(12.5)	1	5	6	(15.3)	2	11	13	(11.8)	4	6	10	(10.1)	
40-44	.	3	3	(9.3)	.	5	5	(12.8)	4	8	12	(10.9)	2	3	5	(5.0)	
45-49	.	3	3	(9.3)	1	3	4	(10.2)	3	9	12	(10.9)	1	7	8	(8.0)	
50-54	2	1	3	(9.3)	.	4	4	(10.2)	.	9	9	(8.1)	2	4	6	(6.0)	
55-59	.	1	1	(3.1)	.	2	2	(5.1)	1	2	3	(2.7)	.	1	1	(1.0)	
60 +	.	2	2	(6.2)	.	.	.	(0.0)	.	5	5	(4.5)	.	2	2	(2.0)	
Prenatal/Pregnant																	
Yes	.	5	5	(15.6)	1	8	9	(23.0)	1	14	15	(13.6)	1	13	14	(14.1)	
No	6	12	18	(56.2)	3	21	24	(61.5)	12	64	76	(69.0)	21	43	64	(64.6)	
Unknown	1	8	9	(28.1)	3	3	6	(15.3)	8	11	19	(17.2)	4	17	21	(21.2)	

¹ MSM refers to men who have sex with men; MSM/W is men who have sex with men and women; MSW is men who have sex with women; WSM refers to women who have sex with men; WSW is women who have sex with women; WSW/M is women who have sex with women and men. TG/STG refers to male-to-female (M to F) transgenders or to men or women who have sex with M to F transgenders.

² Self-reported status; Information collected during field interview.

*Excludes Long Beach and Pasadena health jurisdictions.

Table 4. General Demographics - Female	2007				2006				2005				2004				
	P&S	Early Latent	Total ES		P&S	Early Latent	Total ES		P&S	Early Latent	Total ES		P&S	Early Latent	Total ES		
	N	N	N	%	N	N	N	%	N	N	N	%	N	N	N	%	
Morbidity																	
Total	50	120	170	(100.0)	64	113	177	(100.0)	59	77	136	(100.0)	35	55	90	(100.0)	
Sexual Orientation¹																	
WSM	42	111	153	(90.0)	46	85	131	(74.0)	49	56	105	(77.2)	26	46	72	(80.0)	
WSW	.	.	.	(0.0)	1	.	1	(0.5)	1	2	3	(2.2)	1	.	1	(1.1)	
WSW/M	.	2	2	(1.1)	1	3	4	(2.2)	1	2	3	(2.2)	1	2	3	(3.3)	
Unknown	8	7	15	(8.8)	16	25	41	(23.1)	8	17	25	(18.3)	7	7	14	(15.5)	
HIV Positive²																	
Yes	2	5	7	(4.1)	2	6	8	(4.5)	.	2	2	(1.4)	.	1	1	(1.1)	
No	39	79	118	(69.4)	40	68	108	(61.0)	45	47	92	(67.6)	24	30	54	(60.0)	
Unknown	9	36	45	(26.4)	22	39	61	(34.4)	14	28	42	(30.8)	11	24	35	(38.8)	
Race/Ethnicity																	
White	7	13	20	(11.7)	12	14	26	(14.6)	8	9	17	(12.5)	5	1	6	(6.6)	
African-Amer.	21	38	59	(34.7)	34	28	62	(35.0)	31	27	58	(42.6)	19	22	41	(45.5)	
Latina/o	19	61	80	(47.0)	17	60	77	(43.5)	20	32	52	(38.2)	8	30	38	(42.2)	
Asian/Pac. Is.	.	2	2	(1.1)	.	2	2	(1.1)	.	1	1	(0.7)	1	1	2	(2.2)	
Am.Ind/Alas.Nat.	.	.	.	(0.0)	.	2	2	(1.1)	.	.	.	(0.0)	.	.	.	(0.0)	
Other/Mixed	.	.	.	(0.0)	.	1	1	(0.5)	.	.	.	(0.0)	1	.	1	(1.1)	
Unknown	3	6	9	(5.2)	1	6	7	(3.9)	.	8	8	(5.8)	1	1	2	(2.2)	
Age Group																	
<15	.	.	.	(0.0)	.	1	1	(0.5)	.	.	.	(0.0)	1	.	1	(1.1)	
15-19	5	8	13	(7.6)	7	5	12	(6.7)	5	12	17	(12.5)	4	7	11	(12.2)	
20-24	6	22	28	(16.4)	6	13	19	(10.7)	9	13	22	(16.1)	6	9	15	(16.6)	
25-29	5	24	29	(17.0)	9	18	27	(15.2)	11	11	22	(16.1)	7	14	21	(23.3)	
30-34	9	21	30	(17.6)	6	14	20	(11.2)	7	7	14	(10.2)	3	7	10	(11.1)	
35-39	3	16	19	(11.1)	9	21	30	(16.9)	13	11	24	(17.6)	5	6	11	(12.2)	
40-44	5	11	16	(9.4)	14	18	32	(18.0)	7	11	18	(13.2)	5	9	14	(15.5)	
45-49	11	6	17	(10.0)	9	13	22	(12.4)	4	7	11	(8.0)	1	2	3	(3.3)	
50-54	3	8	11	(6.4)	2	4	6	(3.3)	3	2	5	(3.6)	1	1	2	(2.2)	
55-59	2	2	4	(2.3)	2	3	5	(2.8)	.	.	.	(0.0)	1	.	1	(1.1)	
60+	1	2	3	(1.7)	.	3	3	(1.6)	.	3	3	(2.2)	1	.	1	(1.1)	
Prenatal/Pregnant																	
Yes	3	19	22	(12.9)	.	14	14	(7.9)	2	5	7	(5.1)	1	7	8	(8.8)	
No	33	67	100	(58.8)	34	52	86	(48.5)	42	40	82	(60.2)	22	25	47	(52.2)	
Unknown	14	34	48	(28.2)	30	47	77	(43.5)	15	32	47	(34.5)	12	23	35	(38.8)	

¹ MSM refers to men who have sex with men; MSM/W is men who have sex with men and women; MSW is men who have sex with women; WSM refers to women who have sex with men; WSW is women who have sex with women; WSW/M is women who have sex with women and men. TG/STG refers to male-to-female (M to F) transgenders or to men or women who have sex with M to F transgenders.

² Self-reported status; Information collected during field interview.

*Excludes Long Beach and Pasadena health jurisdictions.

Table 4. General Demographics - Female	2003				2002				2001			
	P&S	Early Latent	Total ES		P&S	Early Latent	Total ES		P&S	Early Latent	Total ES	
	N	N	N	%	N	N	N	%	N	N	N	%
Morbidity												
Total	25	55	80	(100.0)	18	46	64	(100.0)	12	57	69	(100.0)
Sexual Orientation¹												
WSM	21	45	66	(82.5)	17	39	56	(87.5)	8	47	55	(79.7)
WSW	1	1	2	(2.5)	.	.	.	(0.0)	.	2	2	(2.8)
WSW/M	.	.	.	(0.0)	.	.	.	(0.0)	.	1	1	(1.4)
Unknown	3	9	12	(15.0)	1	7	8	(12.5)	4	7	11	(15.9)
HIV Positive²												
Yes	2	.	2	(2.5)	.	2	2	(3.1)	.	.	.	(0.0)
No	18	40	58	(72.5)	15	25	40	(62.5)	.	.	.	(0.0)
Unknown	5	15	20	(25.0)	3	19	22	(34.3)	12	57	69	(100.0)
Race/Ethnicity												
White	2	3	5	(6.2)	1	3	4	(6.2)	3	4	7	(10.1)
African-Amer.	7	21	28	(35.0)	10	10	20	(31.2)	4	10	14	(20.2)
Latina/o	16	25	41	(51.2)	6	28	34	(53.1)	4	42	46	(66.6)
Asian/Pac. Is.	.	2	2	(2.5)	.	2	2	(3.1)	.	.	.	(0.0)
Am.Ind/Alas.Nat.	.	.	.	(0.0)	.	1	1	(1.5)	.	.	.	(0.0)
Other/Mixed	.	.	.	(0.0)	.	.	.	(0.0)	.	.	.	(0.0)
Unknown	.	4	4	(5.0)	1	2	3	(4.6)	1	1	2	(2.8)
Age Group												
<15	.	.	.	(0.0)	.	.	.	(0.0)	.	3	3	(4.3)
15-19	1	6	7	(8.7)	1	3	4	(6.2)	1	7	8	(11.5)
20-24	4	10	14	(17.5)	1	15	16	(25.0)	1	9	10	(14.4)
25-29	5	6	11	(13.7)	1	5	6	(9.3)	3	6	9	(13.0)
30-34	6	8	14	(17.5)	4	5	9	(14.0)	1	12	13	(18.8)
35-39	5	8	13	(16.2)	5	5	10	(15.6)	.	11	11	(15.9)
40-44	.	8	8	(10.0)	1	6	7	(10.9)	2	3	5	(7.2)
45-49	3	6	9	(11.2)	3	4	7	(10.9)	3	4	7	(10.1)
50-54	.	1	1	(1.2)	2	1	3	(4.6)	.	1	1	(1.4)
55-59	.	1	1	(1.2)	.	1	1	(1.5)	.	.	.	(0.0)
60+	1	1	2	(2.5)	.	1	1	(1.5)	1	1	2	(2.8)
Prenatal/Pregnant												
Yes	3	9	12	(15.0)	1	5	6	(9.3)	1	4	5	(7.2)
No	15	29	44	(55.0)	15	18	33	(51.5)	.	11	11	(15.9)
Unknown	7	17	24	(30.0)	2	23	25	(39.0)	11	42	53	(76.8)

¹ MSM refers to men who have sex with men; MSM/W is men who have sex with men and women; MSW is men who have sex with women; WSM refers to women who have sex with men; WSW is women who have sex with women; WSW/M is women who have sex with women and men. TG/STG refers to male-to-female (M to F) transgenders or to men or women who have sex with M to F transgenders.

² Self-reported status; Information collected during field interview.

*Excludes Long Beach and Pasadena health jurisdictions.

Table 5. General Demographics - Heterosexual Men ¹	2010				2009 (YTD)				2009				2008			
	P&S		Early Latent		P&S		Early Latent		P&S		Early Latent		P&S		Early Latent	
	N	N	N	%	N	N	N	%	N	N	N	%	N	N	N	%
Morbidity																
Total	17	27	44	(100.0)	22	32	54	(100.0)	58	86	144	(100.0)	75	82	157	(100.0)
Sexual Orientation¹																
MSW	17	27	44	(100.0)	22	32	54	(100.0)	58	86	144	(100.0)	75	82	157	(100.0)
HIV Positive²																
Yes	.	7	7	(15.9)	5	5	10	(18.5)	10	11	21	(14.5)	18	14	32	(20.3)
No	16	18	34	(77.2)	17	25	42	(77.7)	48	70	118	(81.9)	52	66	118	(75.1)
Unknown	1	2	3	(6.8)	.	2	2	(3.7)	.	5	5	(3.4)	5	2	7	(4.4)
Race/Ethnicity																
White	2	2	4	(9.0)	6	.	6	(11.1)	14	7	21	(14.5)	5	8	13	(8.2)
African-Amer.	5	10	15	(34.0)	8	7	15	(27.7)	19	27	46	(31.9)	23	24	47	(29.9)
Latina/o	9	12	21	(47.7)	8	20	28	(51.8)	19	45	64	(44.4)	36	46	82	(52.2)
Asian/Pac. Is.	.	.	.	(0.0)	.	2	2	(3.7)	1	2	3	(2.0)	4	1	5	(3.1)
Am.Ind/Alas.Nat.	.	.	.	(0.0)	.	.	.	(0.0)	.	.	.	(0.0)	.	.	.	(0.0)
Other/Mixed	.	1	1	(2.2)	.	1	1	(1.8)	.	1	1	(0.6)	1	.	1	(0.6)
Unknown	1	2	3	(6.8)	.	2	2	(3.7)	5	4	9	(6.2)	6	3	9	(5.7)
Age Group																
<15	.	.	.	(0.0)	.	.	.	(0.0)	1	.	1	(0.6)	.	.	.	(0.0)
15-19	4	2	6	(13.6)	1	1	2	(3.7)	4	1	5	(3.4)	3	3	6	(3.8)
20-24	4	1	5	(11.3)	2	3	5	(9.2)	9	14	23	(15.9)	17	8	25	(15.9)
25-29	2	3	5	(11.3)	5	1	6	(11.1)	11	4	15	(10.4)	12	8	20	(12.7)
30-34	1	7	8	(18.1)	3	6	9	(16.6)	5	10	15	(10.4)	12	16	28	(17.8)
35-39	2	1	3	(6.8)	1	5	6	(11.1)	3	11	14	(9.7)	12	17	29	(18.4)
40-44	1	3	4	(9.0)	7	7	14	(25.9)	10	14	24	(16.6)	6	11	17	(10.8)
45-49	.	2	2	(4.5)	1	3	4	(7.4)	8	7	15	(10.4)	4	7	11	(7.0)
50-54	2	5	7	(15.9)	2	2	4	(7.4)	4	10	14	(9.7)	5	2	7	(4.4)
55-59	1	2	3	(6.8)	.	1	1	(1.8)	2	5	7	(4.8)	1	5	6	(3.8)
60 +	.	1	1	(2.2)	.	3	3	(5.5)	1	10	11	(7.6)	3	5	8	(5.0)

¹ Heterosexual men are male cases who did not report having male or M to F transgender sex partners.
MSM refers to men who have sex with men; **MSM/W** is men who have sex with men and women; **MSW** is men who have sex with women
WSM refers to women who have sex with men; **WSW** is women who have sex with women; **WSW/M** is women who have sex with women and men.
TG/STG refers to male-to-female (M to F) transgenders or to men or women who have sex with M to F transgenders.
² Self-reported status; Information collected during field interview.

Table 5. General Demographics - Heterosexual Men ¹	2007				2006				2005			
	P&S	Early Latent	Total ES		P&S	Early Latent	Total ES		P&S	Early Latent	Total ES	
	N	N	N	%	N	N	N	%	N	N	N	%
Morbidity												
Total	106	101	207	(100.0)	105	104	209	(100.0)	76	60	136	(100.0)
Sexual Orientation¹												
MSW	106	101	207	(100.0)	105	104	209	(100.0)	76	60	136	(100.0)
HIV Positive²												
Yes	11	18	29	(14.0)	7	16	23	(11.0)	8	9	17	(12.5)
No	72	59	131	(63.2)	73	58	131	(62.6)	48	38	86	(63.2)
Unknown	23	24	47	(22.7)	25	30	55	(26.3)	20	13	33	(24.2)
Race/Ethnicity												
White	19	8	27	(13.0)	21	5	26	(12.4)	8	5	13	(9.5)
African-Amer.	38	36	74	(35.7)	43	42	85	(40.6)	36	23	59	(43.3)
Latina/o	42	54	96	(46.3)	37	52	89	(42.5)	28	27	55	(40.4)
Asian/Pac. Is.	3	2	5	(2.4)	1	1	2	(0.9)	1	.	1	(0.7)
Am.Ind/Alas.Nat.	.	.	.	(0.0)	.	1	1	(0.4)	.	.	.	(0.0)
Other/Mixed	1	.	1	(0.4)	1	1	2	(0.9)	.	2	2	(1.4)
Unknown	3	1	4	(1.9)	2	2	4	(1.9)	3	3	6	(4.4)
Age Group												
<15	.	.	.	(0.0)	.	.	.	(0.0)	.	.	.	(0.0)
15-19	3	4	7	(3.3)	4	5	9	(4.3)	2	1	3	(2.2)
20-24	11	12	23	(11.1)	8	7	15	(7.1)	4	10	14	(10.2)
25-29	14	17	31	(14.9)	6	8	14	(6.6)	9	8	17	(12.5)
30-34	15	11	26	(12.5)	14	10	24	(11.4)	15	7	22	(16.1)
35-39	14	11	25	(12.0)	22	14	36	(17.2)	7	11	18	(13.2)
40-44	14	18	32	(15.4)	12	16	28	(13.3)	15	13	28	(20.5)
45-49	14	9	23	(11.1)	15	16	31	(14.8)	11	3	14	(10.2)
50-54	10	6	16	(7.7)	12	10	22	(10.5)	5	1	6	(4.4)
55-59	8	6	14	(6.7)	2	10	12	(5.7)	3	2	5	(3.6)
60 +	3	7	10	(4.8)	10	8	18	(8.6)	5	4	9	(6.6)

¹ Heterosexual men are male cases who did not report having male or M to F transgender sex partners.

MSM refers to men who have sex with men; MSM/W is men who have sex with men and women; MSW is men who have sex with women

WSM refers to women who have sex with men; WSW is women who have sex with women; WSW/M is women who have sex with women and men.

TG/STG refers to male-to-female (M to F) transgenders or to men or women who have sex with M to F transgenders.

² Self-reported status; Information collected during field interview.

*Excludes Long Beach and Pasadena health jurisdictions.

Updated 06/09/2010/Produced by LAC DPH Epidemiology Unit /2615 South Grand Avenue, Room 500 Los Angeles, CA 90007/213.744.5966/gaynalem@ph.lacounty.gov

Table 5. General Demographics - Heterosexual Men ¹	2004				2003				2002				2001			
	P&S	Early Latent	Total ES		P&S	Early Latent	Total ES		P&S	Early Latent	Total ES		P&S	Early Latent	Total ES	
	N	N	N	%	N	N	N	%	N	N	N	%	N	N	N	%
Morbidity																
Total	61	52	113	(100.0)	42	40	82	(100.0)	30	40	70	(100.0)	30	43	73	(100.0)
Sexual Orientation¹																
MSW	61	52	113	(100.0)	42	40	82	(100.0)	30	40	70	(100.0)	30	43	73	(100.0)
HIV Positive²																
Yes	4	7	11	(9.7)	4	2	6	(7.3)	6	1	7	(10.0)	.	.	.	(0.0)
No	47	33	80	(70.7)	32	30	62	(75.6)	18	26	44	(62.8)	.	.	.	(0.0)
Unknown	10	12	22	(19.4)	6	8	14	(17.0)	6	13	19	(27.1)	30	43	73	(100.0)
Race/Ethnicity																
White	7	6	13	(11.5)	6	.	6	(7.3)	7	3	10	(14.2)	4	4	8	(10.9)
African-Amer.	23	17	40	(35.3)	15	7	22	(26.8)	10	12	22	(31.4)	7	6	13	(17.8)
Latina/o	26	26	52	(46.0)	17	29	46	(56.0)	10	23	33	(47.1)	17	32	49	(67.1)
Asian/Pac. Is.	3	2	5	(4.4)	2	3	5	(6.0)	2	2	4	(5.7)	1	1	2	(2.7)
Am.Ind/Alas.Nat.	.	.	.	(0.0)	.	.	.	(0.0)	.	.	.	(0.0)	.	.	.	(0.0)
Other/Mixed	.	1	1	(0.8)	.	.	.	(0.0)	.	.	.	(0.0)	.	.	.	(0.0)
Unknown	2	.	2	(1.7)	2	1	3	(3.6)	1	.	1	(1.4)	1	.	1	(1.3)
Age Group																
<15	.	.	.	(0.0)	.	.	.	(0.0)	.	.	.	(0.0)	.	.	.	(0.0)
15-19	4	1	5	(4.4)	3	4	7	(8.5)	2	4	6	(8.5)	2	1	3	(4.1)
20-24	6	6	12	(10.6)	6	5	11	(13.4)	4	6	10	(14.2)	4	3	7	(9.5)
25-29	13	9	22	(19.4)	2	7	9	(10.9)	4	8	12	(17.1)	2	9	11	(15.0)
30-34	5	7	12	(10.6)	4	7	11	(13.4)	3	4	7	(10.0)	8	9	17	(23.2)
35-39	7	7	14	(12.3)	6	10	16	(19.5)	6	6	12	(17.1)	6	8	14	(19.1)
40-44	15	6	21	(18.5)	11	.	11	(13.4)	2	4	6	(8.5)	2	5	7	(9.5)
45-49	6	5	11	(9.7)	4	1	5	(6.0)	3	4	7	(10.0)	5	4	9	(12.3)
50-54	2	5	7	(6.1)	4	1	5	(6.0)	4	2	6	(8.5)	1	2	3	(4.1)
55-59	3	1	4	(3.5)	2	3	5	(6.0)	1	2	3	(4.2)	.	1	1	(1.3)
60 +	.	5	5	(4.4)	.	2	2	(2.4)	1	.	1	(1.4)	.	1	1	(1.3)

¹ Heterosexual men are male cases who did not report having male or M to F transgender sex partners.
 MSM refers to men who have sex with men; MSM/W is men who have sex with men and women; MSW is men who have sex with women
 WSM refers to women who have sex with men; WSW is women who have sex with women; WSW/M is women who have sex with women and men.
 TG/STG refers to male-to-female (M to F) transgenders or to men or women who have sex with M to F transgenders.
² Self-reported status; Information collected during field interview.

Table 6. Behavioral Risk Factors by Sexual Orientation ¹²	2010						2009 (YTD)					
	MSM & MSM/W		MSW		All Female		MSM & MSM/W		MSW		All Female	
	N	%	N	%	N	%	N	%	N	%	N	%
Anal Insertive												
Yes	253	(72.7)	1	(2.4)	.	(0.0)	337	(64.9)	4	(7.4)	.	(0.0)
No	73	(20.9)	37	(90.2)	18	(85.7)	119	(22.9)	44	(81.4)	29	(85.2)
Unknown	22	(6.3)	3	(7.3)	3	(14.2)	63	(12.1)	6	(11.1)	5	(14.7)
Anal Receptive												
Yes	242	(69.5)	.	(0.0)	1	(4.7)	336	(64.7)	.	(0.0)	.	(0.0)
No	84	(24.1)	38	(92.6)	17	(80.9)	119	(22.9)	51	(94.4)	29	(85.2)
Unknown	22	(6.3)	3	(7.3)	3	(14.2)	64	(12.3)	3	(5.5)	5	(14.7)
Oral Sex												
Yes	293	(84.1)	24	(58.5)	13	(61.9)	427	(82.2)	28	(51.8)	19	(55.8)
No	32	(9.1)	14	(34.1)	5	(23.8)	29	(5.5)	22	(40.7)	10	(29.4)
Unknown	23	(6.6)	3	(7.3)	3	(14.2)	63	(12.1)	4	(7.4)	5	(14.7)
Vaginal Sex												
Yes	22	(6.3)	32	(78.0)	18	(85.7)	14	(2.6)	42	(77.7)	26	(76.4)
No	307	(88.2)	8	(19.5)	1	(4.7)	458	(88.2)	10	(18.5)	4	(11.7)
Unknown	19	(5.4)	1	(2.4)	2	(9.5)	47	(9.0)	2	(3.7)	4	(11.7)
Anonymous Partners												
Yes	192	(55.1)	14	(34.1)	.	(0.0)	259	(49.9)	18	(33.3)	3	(8.8)
No	135	(38.7)	23	(56.0)	18	(85.7)	196	(37.7)	33	(61.1)	28	(82.3)
Unknown	21	(6.0)	4	(9.7)	3	(14.2)	64	(12.3)	3	(5.5)	3	(8.8)
Condom Used³												
Yes	123	(35.3)	9	(21.9)	1	(4.7)	143	(27.5)	11	(20.3)	3	(8.8)
No	177	(50.8)	24	(58.5)	15	(71.4)	276	(53.1)	35	(64.8)	25	(73.5)
Unknown	48	(13.7)	8	(19.5)	5	(23.8)	100	(19.2)	8	(14.8)	6	(17.6)
Incarcerated Past Year												
Yes	7	(2.0)	3	(7.3)	.	(0.0)	30	(5.7)	5	(9.2)	3	(8.8)
No	285	(81.8)	32	(78.0)	16	(76.1)	354	(68.2)	39	(72.2)	19	(55.8)
Unknown	56	(16.0)	6	(14.6)	5	(23.8)	135	(26.0)	10	(18.5)	12	(35.2)
IV Drug User												
Yes	3	(0.8)	1	(2.4)	1	(4.7)	16	(3.0)	.	(0.0)	1	(2.9)
No	324	(93.1)	37	(90.2)	17	(80.9)	434	(83.6)	51	(94.4)	29	(85.2)
Unknown	21	(6.0)	3	(7.3)	3	(14.2)	69	(13.2)	3	(5.5)	4	(11.7)
Non-IV Drug User												
Yes	63	(18.1)	9	(21.9)	2	(9.5)	103	(19.8)	6	(11.1)	4	(11.7)
No	264	(75.8)	28	(68.2)	16	(76.1)	344	(66.2)	46	(85.1)	25	(73.5)
Unknown	21	(6.0)	4	(9.7)	3	(14.2)	72	(13.8)	2	(3.7)	5	(14.7)

¹ Behavioral risk information is available starting in 2001 and includes closed cases only. Excludes cases with no information on sexual partners.

² MSM refers to men who have sex with men; MSM/W is men who have sex with men and women; MSW is men who have sex with women; WSM refers to women who have sex with men; WSW is women who have sex with women; WSW/M is women who have sex with women and men. TG/STG refers to male-to-female (M to F) transenders or to men or women who have sex with M to F transenders.

³ Condom was used at last intercourse.

Table 6. Behavioral Risk Factors by Sexual Orientation ¹²	2009						2008					
	MSM & MSM/W		MSW		All Female		MSM & MSM/W		MSW		All Female	
	N	%	N	%	N	%	N	%	N	%	N	%
Anal Insertive												
Yes	839	(65.4)	15	(10.4)	1	(0.9)	680	(63.6)	16	(10.1)	1	(1.0)
No	306	(23.8)	113	(78.4)	86	(85.1)	230	(21.5)	119	(75.7)	71	(78.0)
Unknown	136	(10.6)	16	(11.1)	14	(13.8)	158	(14.7)	22	(14.0)	19	(20.8)
Anal Receptive												
Yes	844	(65.8)	1	(0.6)	5	(4.9)	655	(61.3)	1	(0.6)	3	(3.2)
No	302	(23.5)	130	(90.2)	86	(85.1)	250	(23.4)	137	(87.2)	68	(74.7)
Unknown	135	(10.5)	13	(9.0)	10	(9.9)	163	(15.2)	19	(12.1)	20	(21.9)
Oral Sex												
Yes	1053	(82.2)	74	(51.3)	58	(57.4)	832	(77.9)	92	(58.5)	42	(46.1)
No	95	(7.4)	57	(39.5)	33	(32.6)	76	(7.1)	41	(26.1)	31	(34.0)
Unknown	133	(10.3)	13	(9.0)	10	(9.9)	160	(14.9)	24	(15.2)	18	(19.7)
Vaginal Sex												
Yes	41	(3.2)	107	(74.3)	83	(82.1)	35	(3.2)	134	(85.3)	71	(78.0)
No	1140	(88.9)	28	(19.4)	10	(9.9)	899	(84.1)	12	(7.6)	6	(6.5)
Unknown	100	(7.8)	9	(6.2)	8	(7.9)	134	(12.5)	11	(7.0)	14	(15.3)
Anonymous Partners												
Yes	679	(53.0)	39	(27.0)	9	(8.9)	548	(51.3)	57	(36.3)	7	(7.6)
No	467	(36.4)	92	(63.8)	83	(82.1)	362	(33.8)	81	(51.5)	66	(72.5)
Unknown	135	(10.5)	13	(9.0)	9	(8.9)	158	(14.7)	19	(12.1)	18	(19.7)
Condom Used³												
Yes	390	(30.4)	26	(18.0)	14	(13.8)	292	(27.3)	39	(24.8)	9	(9.8)
No	665	(51.9)	93	(64.5)	73	(72.2)	541	(50.6)	87	(55.4)	58	(63.7)
Unknown	226	(17.6)	25	(17.3)	14	(13.8)	235	(22.0)	31	(19.7)	24	(26.3)
Incarcerated Past Year												
Yes	59	(4.6)	15	(10.4)	8	(7.9)	45	(4.2)	18	(11.4)	9	(9.8)
No	934	(72.9)	98	(68.0)	71	(70.2)	785	(73.5)	102	(64.9)	54	(59.3)
Unknown	288	(22.4)	31	(21.5)	22	(21.7)	238	(22.2)	37	(23.5)	28	(30.7)
IV Drug User												
Yes	31	(2.4)	1	(0.6)	3	(2.9)	19	(1.7)	2	(1.2)	2	(2.1)
No	1106	(86.3)	130	(90.2)	90	(89.1)	886	(82.9)	139	(88.5)	76	(83.5)
Unknown	144	(11.2)	13	(9.0)	8	(7.9)	163	(15.2)	16	(10.1)	13	(14.2)
Non-IV Drug User												
Yes	233	(18.1)	25	(17.3)	14	(13.8)	210	(19.6)	25	(15.9)	14	(15.3)
No	897	(70.0)	107	(74.3)	77	(76.2)	696	(65.1)	114	(72.6)	63	(69.2)
Unknown	151	(11.7)	12	(8.3)	10	(9.9)	162	(15.1)	18	(11.4)	14	(15.3)

¹ Behavioral risk information is available starting in 2001 and includes closed cases only. Excludes cases with no information on sexual partners.

² MSM refers to men who have sex with men; MSM/W is men who have sex with men and women; MSW is men who have sex with women; WSM refers to women who have sex with men; WSW is women who have sex with women; WSW/M is women who have sex with women and men. TG/STG refers to male-to-female (M to F) transgenders or to men or women who have sex with M to F transgenders.

³ Condom was used at last intercourse.

Table 6. Behavioral Risk Factors by Sexual Orientation ¹²	2007						2006					
	MSM & MSM/W		MSW		All Female		MSM & MSM/W		MSW		All Female	
	N	%	N	%	N	%	N	%	N	%	N	%
Anal Insertive												
Yes	691	(61.4)	26	(12.5)	1	(0.6)	454	(47.2)	15	(7.2)	.	(0.0)
No	192	(17.0)	142	(68.5)	103	(66.4)	127	(13.2)	146	(70.1)	98	(72.5)
Unknown	242	(21.5)	39	(18.8)	51	(32.9)	379	(39.4)	47	(22.5)	37	(27.4)
Anal Receptive												
Yes	683	(60.7)	2	(0.9)	20	(12.9)	455	(47.3)	2	(0.9)	14	(10.3)
No	202	(17.9)	163	(78.7)	95	(61.2)	123	(12.8)	163	(78.3)	86	(63.7)
Unknown	240	(21.3)	42	(20.2)	40	(25.8)	382	(39.7)	43	(20.6)	35	(25.9)
Oral Sex												
Yes	835	(74.2)	132	(63.7)	70	(45.1)	538	(56.0)	110	(52.8)	65	(48.1)
No	57	(5.0)	38	(18.3)	47	(30.3)	47	(4.8)	50	(24.0)	38	(28.1)
Unknown	233	(20.7)	37	(17.8)	38	(24.5)	375	(39.0)	48	(23.0)	32	(23.7)
Vaginal Sex												
Yes	52	(4.6)	167	(80.6)	129	(83.2)	37	(3.8)	159	(76.4)	104	(77.0)
No	864	(76.8)	15	(7.2)	4	(2.5)	575	(59.8)	14	(6.7)	5	(3.7)
Unknown	209	(18.5)	25	(12.0)	22	(14.1)	348	(36.2)	35	(16.8)	26	(19.2)
Anonymous Partners												
Yes	624	(55.4)	81	(39.1)	26	(16.7)	405	(42.1)	87	(41.8)	21	(15.5)
No	269	(23.9)	90	(43.4)	95	(61.2)	176	(18.3)	80	(38.4)	84	(62.2)
Unknown	232	(20.6)	36	(17.3)	34	(21.9)	379	(39.4)	41	(19.7)	30	(22.2)
Condom Used³												
Yes	310	(27.5)	23	(11.1)	20	(12.9)	206	(21.4)	31	(14.9)	22	(16.2)
No	483	(42.9)	133	(64.2)	92	(59.3)	300	(31.2)	119	(57.2)	74	(54.8)
Unknown	332	(29.5)	51	(24.6)	43	(27.7)	454	(47.2)	58	(27.8)	39	(28.8)
Incarcerated Past Year												
Yes	52	(4.6)	30	(14.4)	22	(14.1)	45	(4.6)	27	(12.9)	20	(14.8)
No	731	(64.9)	120	(57.9)	70	(45.1)	448	(46.6)	100	(48.0)	62	(45.9)
Unknown	342	(30.4)	57	(27.5)	63	(40.6)	467	(48.6)	81	(38.9)	53	(39.2)
IV Drug User												
Yes	24	(2.1)	6	(2.8)	6	(3.8)	32	(3.3)	3	(1.4)	4	(2.9)
No	851	(75.6)	163	(78.7)	114	(73.5)	538	(56.0)	158	(75.9)	99	(73.3)
Unknown	250	(22.2)	38	(18.3)	35	(22.5)	390	(40.6)	47	(22.5)	32	(23.7)
Non-IV Drug User												
Yes	203	(18.0)	46	(22.2)	37	(23.8)	140	(14.5)	48	(23.0)	36	(26.6)
No	675	(60.0)	118	(57.0)	81	(52.2)	424	(44.1)	109	(52.4)	66	(48.8)
Unknown	247	(21.9)	43	(20.7)	37	(23.8)	396	(41.2)	51	(24.5)	33	(24.4)

¹ Behavioral risk information is available starting in 2001 and includes closed cases only. Excludes cases with no information on sexual partners.

² MSM refers to men who have sex with men; MSM/W is men who have sex with men and women; MSW is men who have sex with women; WSM refers to women who have sex with men; WSW is women who have sex with women; WSW/M is women who have sex with women and men. TG/STG refers to male-to-female (M to F) transgenders or to men or women who have sex with M to F transgenders.

³ Condom was used at last intercourse.

Table 6. Behavioral Risk Factors by Sexual Orientation ¹²	2005						2004					
	MSM & MSM/W		MSW		All Female		MSM & MSM/W		MSW		All Female	
	N	%	N	%	N	%	N	%	N	%	N	%
Anal Insertive												
Yes	506	(62.2)	8	(5.9)	.	(0.0)	375	(63.9)	11	(9.7)	1	(1.3)
No	140	(17.2)	103	(76.2)	81	(72.9)	80	(13.6)	81	(71.6)	59	(77.6)
Unknown	167	(20.5)	24	(17.7)	30	(27.0)	131	(22.3)	21	(18.5)	16	(21.0)
Anal Receptive												
Yes	518	(63.7)	.	(0.0)	10	(9.0)	349	(59.5)	.	(0.0)	7	(9.2)
No	126	(15.4)	112	(82.9)	72	(64.8)	102	(17.4)	101	(89.3)	48	(63.1)
Unknown	169	(20.7)	23	(17.0)	29	(26.1)	135	(23.0)	12	(10.6)	21	(27.6)
Oral Sex												
Yes	612	(75.2)	88	(65.1)	60	(54.0)	428	(73.0)	66	(58.4)	34	(44.7)
No	40	(4.9)	24	(17.7)	24	(21.6)	30	(5.1)	29	(25.6)	21	(27.6)
Unknown	161	(19.8)	23	(17.0)	27	(24.3)	128	(21.8)	18	(15.9)	21	(27.6)
Vaginal Sex												
Yes	30	(3.6)	116	(85.9)	88	(79.2)	34	(5.8)	99	(87.6)	66	(86.8)
No	659	(81.0)	4	(2.9)	6	(5.4)	485	(82.7)	6	(5.3)	3	(3.9)
Unknown	124	(15.2)	15	(11.1)	17	(15.3)	67	(11.4)	8	(7.0)	7	(9.2)
Anonymous Partners												
Yes	453	(55.7)	56	(41.4)	24	(21.6)	359	(61.2)	38	(33.6)	13	(17.1)
No	171	(21.0)	57	(42.2)	58	(52.2)	109	(18.6)	58	(51.3)	43	(56.5)
Unknown	189	(23.2)	22	(16.2)	29	(26.1)	118	(20.1)	17	(15.0)	20	(26.3)
Condom Used³												
Yes	220	(27.0)	19	(14.0)	15	(13.5)	140	(23.8)	25	(22.1)	7	(9.2)
No	372	(45.7)	94	(69.6)	69	(62.1)	267	(45.5)	61	(53.9)	44	(57.8)
Unknown	221	(27.1)	22	(16.2)	27	(24.3)	179	(30.5)	27	(23.8)	25	(32.8)
Incarcerated Past Year												
Yes	49	(6.0)	16	(11.8)	12	(10.8)	20	(3.4)	12	(10.6)	6	(7.8)
No	519	(63.8)	77	(57.0)	63	(56.7)	419	(71.5)	67	(59.2)	43	(56.5)
Unknown	245	(30.1)	42	(31.1)	36	(32.4)	147	(25.0)	34	(30.0)	27	(35.5)
IV Drug User												
Yes	25	(3.0)	6	(4.4)	4	(3.6)	13	(2.2)	3	(2.6)	1	(1.3)
No	610	(75.0)	104	(77.0)	84	(75.6)	454	(77.4)	92	(81.4)	57	(75.0)
Unknown	178	(21.8)	25	(18.5)	23	(20.7)	119	(20.3)	18	(15.9)	18	(23.6)
Non-IV Drug User												
Yes	190	(23.3)	33	(24.4)	33	(29.7)	103	(17.5)	31	(27.4)	11	(14.4)
No	434	(53.3)	71	(52.5)	54	(48.6)	353	(60.2)	59	(52.2)	46	(60.5)
Unknown	189	(23.2)	31	(22.9)	24	(21.6)	130	(22.1)	23	(20.3)	19	(25.0)

¹ Behavioral risk information is available starting in 2001 and includes closed cases only. Excludes cases with no information on sexual partners.

² MSM refers to men who have sex with men; MSM/W is men who have sex with men and women; MSW is men who have sex with women; WSM refers to women who have sex with men; WSW is women who have sex with women; WSW/M is women who have sex with women and men. TG/STG refers to male-to-female (M to F) transgenders or to men or women who have sex with M to F transgenders.

³ Condom was used at last intercourse.

Table 6. Behavioral Risk Factors by Sexual Orientation ¹²	2003						2002					
	MSM & MSM/W		MSW		All Female		MSM & MSM/W		MSW		All Female	
	N	%	N	%	N	%	N	%	N	%	N	%
Anal Insertive												
Yes	373	(64.5)	8	(9.7)	.	(0.0)	356	(68.3)	5	(7.1)	1	(1.7)
No	89	(15.3)	55	(67.0)	48	(70.5)	72	(13.8)	48	(68.5)	41	(73.2)
Unknown	116	(20.0)	19	(23.1)	20	(29.4)	93	(17.8)	17	(24.2)	14	(25.0)
Anal Receptive												
Yes	384	(66.4)	.	(0.0)	6	(8.8)	341	(65.4)	.	(0.0)	9	(16.0)
No	81	(14.0)	68	(82.9)	43	(63.2)	81	(15.5)	51	(72.8)	32	(57.1)
Unknown	113	(19.5)	14	(17.0)	19	(27.9)	99	(19.0)	19	(27.1)	15	(26.7)
Oral Sex												
Yes	458	(79.2)	47	(57.3)	39	(57.3)	415	(79.6)	35	(50.0)	22	(39.2)
No	21	(3.6)	18	(21.9)	14	(20.5)	20	(3.8)	17	(24.2)	19	(33.9)
Unknown	99	(17.1)	17	(20.7)	15	(22.0)	86	(16.5)	18	(25.7)	15	(26.7)
Vaginal Sex												
Yes	27	(4.6)	77	(93.9)	59	(86.7)	37	(7.1)	60	(85.7)	52	(92.8)
No	498	(86.1)	.	(0.0)	2	(2.9)	416	(79.8)	4	(5.7)	.	(0.0)
Unknown	53	(9.1)	5	(6.0)	7	(10.2)	68	(13.0)	6	(8.5)	4	(7.1)
Anonymous Partners												
Yes	375	(64.8)	29	(35.3)	6	(8.8)	341	(65.4)	22	(31.4)	3	(5.3)
No	92	(15.9)	37	(45.1)	41	(60.2)	89	(17.0)	34	(48.5)	40	(71.4)
Unknown	111	(19.2)	16	(19.5)	21	(30.8)	91	(17.4)	14	(20.0)	13	(23.2)
Condom Used³												
Yes	138	(23.8)	12	(14.6)	8	(11.7)	121	(23.2)	15	(21.4)	7	(12.5)
No	276	(47.7)	51	(62.1)	41	(60.2)	259	(49.7)	35	(50.0)	39	(69.6)
Unknown	164	(28.3)	19	(23.1)	19	(27.9)	141	(27.0)	20	(28.5)	10	(17.8)
Incarcerated Past Year												
Yes	22	(3.8)	8	(9.7)	8	(11.7)	17	(3.2)	7	(10.0)	2	(3.5)
No	415	(71.7)	51	(62.1)	43	(63.2)	352	(67.5)	34	(48.5)	27	(48.2)
Unknown	141	(24.3)	23	(28.0)	17	(25.0)	152	(29.1)	29	(41.4)	27	(48.2)
IV Drug User												
Yes	15	(2.5)	1	(1.2)	2	(2.9)	14	(2.6)	.	(0.0)	1	(1.7)
No	449	(77.6)	65	(79.2)	51	(75.0)	414	(79.4)	60	(85.7)	43	(76.7)
Unknown	114	(19.7)	16	(19.5)	15	(22.0)	93	(17.8)	10	(14.2)	12	(21.4)
Non-IV Drug User												
Yes	140	(24.2)	19	(23.1)	14	(20.5)	110	(21.1)	14	(20.0)	5	(8.9)
No	314	(54.3)	48	(58.5)	39	(57.3)	311	(59.6)	42	(60.0)	38	(67.8)
Unknown	124	(21.4)	15	(18.2)	15	(22.0)	100	(19.1)	14	(20.0)	13	(23.2)

¹ Behavioral risk information is available starting in 2001 and includes closed cases only. Excludes cases with no information on sexual partners.

² MSM refers to men who have sex with men; MSM/W is men who have sex with men and women; MSW is men who have sex with women; WSM refers to women who have sex with men; WSW is women who have sex with women; WSW/M is women who have sex with women and men. TG/STG refers to male-to-female (M to F) transgenders or to men or women who have sex with M to F transgenders.

³ Condom was used at last intercourse.

Table 6. Behavioral Risk Factors by Sexual Orientation ¹²	2001					
	MSM & MSM/W		MSW		All Female	
	N	%	N	%	N	%
Anal Insertive						
Yes	149	(67.1)	4	(5.6)	.	(0.0)
No	20	(9.0)	21	(29.5)	20	(38.4)
Unknown	53	(23.8)	46	(64.7)	32	(61.5)
Anal Receptive						
Yes	143	(64.4)	1	(1.4)	3	(5.7)
No	26	(11.7)	23	(32.3)	15	(28.8)
Unknown	53	(23.8)	47	(66.1)	34	(65.3)
Oral Sex						
Yes	170	(76.5)	33	(46.4)	23	(44.2)
No	6	(2.7)	9	(12.6)	5	(9.6)
Unknown	46	(20.7)	29	(40.8)	24	(46.1)
Vaginal Sex						
Yes	8	(3.6)	62	(87.3)	43	(82.6)
No	91	(40.9)	1	(1.4)	1	(1.9)
Unknown	123	(55.4)	8	(11.2)	8	(15.3)
Anonymous Partners						
Yes	123	(55.4)	23	(32.3)	6	(11.5)
No	42	(18.9)	21	(29.5)	24	(46.1)
Unknown	57	(25.6)	27	(38.0)	22	(42.3)
Condom Used³						
Yes	63	(28.3)	19	(26.7)	11	(21.1)
No	78	(35.1)	28	(39.4)	19	(36.5)
Unknown	81	(36.4)	24	(33.8)	22	(42.3)
Incarcerated Past Year						
Yes	10	(4.5)	3	(4.2)	3	(5.7)
No	130	(58.5)	37	(52.1)	25	(48.0)
Unknown	82	(36.9)	31	(43.6)	24	(46.1)
IV Drug User						
Yes	3	(1.3)	3	(4.2)	1	(1.9)
No	176	(79.2)	51	(71.8)	34	(65.3)
Unknown	43	(19.3)	17	(23.9)	17	(32.6)
Non-IV Drug User						
Yes	53	(23.8)	20	(28.1)	5	(9.6)
No	123	(55.4)	28	(39.4)	29	(55.7)
Unknown	46	(20.7)	23	(32.3)	18	(34.6)

¹ Behavioral risk information is available starting in 2001 and includes closed cases only. Excludes cases with no information on sexual partners.

² MSM refers to men who have sex with men; MSM/W is men who have sex with men and women; MSW is men who have sex with women; WSM refers to women who have sex with men; WSW is women who have sex with women; WSW/M is women who have sex with women and men. TG/STG refers to male-to-female (M to F) transgenerators or to men or women who have sex with M to F transgenerators.

³ Condom was used at last intercourse.

Table 7. Venue Risk by Sexual Orientation ¹²³	2009						2008					
	MSM & MSM/W		MSW		All Female		MSM & MSM/W		MSW		All Female	
	N	%	N	%	N	%	N	%	N	%	N	%
Bars and Clubs												
Yes	289	(28.5)	26	(27.3)	2	(3.8)	279	(44.0)	23	(33.3)	6	(18.7)
No	696	(68.8)	61	(64.2)	41	(78.8)	322	(50.8)	44	(63.7)	19	(59.3)
Unknown	26	(2.5)	8	(8.4)	9	(17.3)	32	(5.0)	2	(2.8)	7	(21.8)
Bathhouses/Sex Clubs												
Yes	117	(11.5)	.	(0.0)	.	(0.0)	66	(10.4)	2	(2.8)	1	(3.1)
No	868	(85.8)	87	(91.5)	43	(82.6)	535	(84.5)	65	(94.2)	24	(75.0)
Unknown	26	(2.5)	8	(8.4)	9	(17.3)	32	(5.0)	2	(2.8)	7	(21.8)
Motels/Hotel												
Yes	64	(6.3)	15	(15.7)	3	(5.7)	22	(3.4)	14	(20.2)	4	(12.5)
No	921	(91.0)	72	(75.7)	40	(76.9)	580	(91.6)	53	(76.8)	21	(65.6)
Unknown	26	(2.5)	8	(8.4)	9	(17.3)	31	(4.8)	2	(2.8)	7	(21.8)
Streets												
Yes	62	(6.1)	16	(16.8)	6	(11.5)	36	(5.6)	19	(27.5)	3	(9.3)
No	923	(91.2)	71	(74.7)	37	(71.1)	565	(89.2)	48	(69.5)	22	(68.7)
Unknown	26	(2.5)	8	(8.4)	9	(17.3)	32	(5.0)	2	(2.8)	7	(21.8)
Internet												
Yes	363	(35.9)	3	(3.1)	.	(0.0)	224	(35.3)	1	(1.4)	2	(6.2)
No	622	(61.5)	84	(88.4)	43	(82.6)	377	(59.5)	66	(95.6)	23	(71.8)
Unknown	26	(2.5)	8	(8.4)	9	(17.3)	32	(5.0)	2	(2.8)	7	(21.8)
Parks												
Yes	19	(1.8)	1	(1.0)	.	(0.0)	16	(2.5)	7	(10.1)	1	(3.1)
No	966	(95.5)	86	(90.5)	43	(82.6)	585	(92.4)	60	(86.9)	24	(75.0)
Unknown	26	(2.5)	8	(8.4)	9	(17.3)	32	(5.0)	2	(2.8)	7	(21.8)
Home												
Yes	645	(63.7)	51	(53.6)	44	(84.6)	311	(49.1)	31	(44.9)	20	(62.5)
No	366	(36.2)	44	(46.3)	8	(15.3)	322	(50.8)	38	(55.0)	12	(37.5)
Other Venue												
Yes	412	(40.7)	50	(52.6)	31	(59.6)	193	(30.4)	25	(36.2)	16	(50.0)
No	573	(56.6)	37	(38.9)	12	(23.0)	408	(64.4)	42	(60.8)	9	(28.1)
Unknown	26	(2.5)	8	(8.4)	9	(17.3)	32	(5.0)	2	(2.8)	7	(21.8)
Total	1011	(100.0)	95	(100.0)	52	(100.0)	633	(100.0)	69	(100.0)	32	(100.0)

¹ Venue risk information is available starting in 2001 and includes closed cases only. Excludes cases with no information on sexual partners.

² Had sex or met sex partners at defined venues during the period when syphilis infection likely occurred (critical period).

³ MSM refers to men who have sex with men; MSM/W is men who have sex with men and women; MSW is men who have sex with women; WSM refers to women who have sex with men; WSW is women who have sex with women; WSW/M is women who have sex with women and men. TG/STG refers to male-to-female (M to F) transgenders or to men or women who have sex with M to F transgenders.

Table 7. Venue Risk by Sexual Orientation ¹²³	2007						2006					
	MSM & MSM/W		MSW		All Female		MSM & MSM/W		MSW		All Female	
	N	%	N	%	N	%	N	%	N	%	N	%
Bars and Clubs												
Yes	315	(92.3)	32	(94.1)	6	(66.6)	195	(94.6)	30	(85.7)	3	(60.0)
No	26	(7.6)	2	(5.8)	3	(33.3)	11	(5.3)	5	(14.2)	2	(40.0)
Unknown	.	(0.0)	.	(0.0)	.	(0.0)	.	(0.0)	.	(0.0)	.	(0.0)
Bathhouses/Sex Clubs												
Yes	59	(17.3)	.	(0.0)	.	(0.0)	42	(20.3)	.	(0.0)	.	(0.0)
No	282	(82.6)	34	(100.0)	9	(100.0)	164	(79.6)	35	(100.0)	5	(100.0)
Unknown	.	(0.0)	.	(0.0)	.	(0.0)	.	(0.0)	.	(0.0)	.	(0.0)
Motels/Hotel												
Yes	10	(2.9)	3	(8.8)	3	(33.3)	8	(3.8)	4	(11.4)	1	(20.0)
No	331	(97.0)	31	(91.1)	6	(66.6)	198	(96.1)	31	(88.5)	4	(80.0)
Unknown	.	(0.0)	.	(0.0)	.	(0.0)	.	(0.0)	.	(0.0)	.	(0.0)
Streets												
Yes	23	(6.7)	3	(8.8)	5	(55.5)	26	(12.6)	9	(25.7)	1	(20.0)
No	318	(93.2)	31	(91.1)	4	(44.4)	180	(87.3)	26	(74.2)	4	(80.0)
Unknown	.	(0.0)	.	(0.0)	.	(0.0)	.	(0.0)	.	(0.0)	.	(0.0)
Internet												
Yes	96	(28.1)	3	(8.8)	.	(0.0)	60	(29.1)	.	(0.0)	.	(0.0)
No	245	(71.8)	31	(91.1)	9	(100.0)	146	(70.8)	35	(100.0)	5	(100.0)
Unknown	.	(0.0)	.	(0.0)	.	(0.0)	.	(0.0)	.	(0.0)	.	(0.0)
Parks												
Yes	10	(2.9)	.	(0.0)	1	(11.1)	9	(4.3)	2	(5.7)	.	(0.0)
No	331	(97.0)	34	(100.0)	8	(88.8)	197	(95.6)	33	(94.2)	5	(100.0)
Unknown	.	(0.0)	.	(0.0)	.	(0.0)	.	(0.0)	.	(0.0)	.	(0.0)
Home												
Yes	12	(3.5)	.	(0.0)	.	(0.0)	.	(0.0)	.	(0.0)	.	(0.0)
No	329	(96.4)	34	(100.0)	9	(100.0)	206	(100.0)	35	(100.0)	5	(100.0)
Other Venue												
Yes	64	(18.7)	10	(29.4)	1	(11.1)	45	(21.8)	8	(22.8)	1	(20.0)
No	277	(81.2)	24	(70.5)	8	(88.8)	161	(78.1)	27	(77.1)	4	(80.0)
Unknown	.	(0.0)	.	(0.0)	.	(0.0)	.	(0.0)	.	(0.0)	.	(0.0)
Total	341	(100.0)	34	(100.0)	9	(100.0)	206	(100.0)	35	(100.0)	5	(100.0)

¹ Venue risk information is available starting in 2001 and includes closed cases only. Excludes cases with no information on sexual partners.

² Had sex or met sex partners at defined venues during the period when syphilis infection likely occurred (critical period).

³ MSM refers to men who have sex with men; MSM/W is men who have sex with men and women; MSW is men who have sex with women; WSM refers to women who have sex with men; WSW is women who have sex with women; WSW/M is women who have sex with women and men. TG/STG refers to male-to-female (M to F) transgenders or to men or women who have sex with M to F transgenders.

Table 7. Venue Risk by Sexual Orientation ¹²³	2005						2004					
	MSM & MSM/W		MSW		All Female		MSM & MSM/W		MSW		All Female	
	N	%	N	%	N	%	N	%	N	%	N	%
Bars and Clubs												
Yes	217	(98.1)	19	(100.0)	7	(100.0)	175	(98.3)	16	(100.0)	4	(100.0)
No	4	(1.8)	.	(0.0)	.	(0.0)	3	(1.6)	.	(0.0)	.	(0.0)
Unknown	.	(0.0)	.	(0.0)	.	(0.0)	.	(0.0)	.	(0.0)	.	(0.0)
Bathhouses/Sex Clubs												
Yes	38	(17.1)	.	(0.0)	.	(0.0)	32	(17.9)	1	(6.2)	1	(25.0)
No	183	(82.8)	19	(100.0)	7	(100.0)	146	(82.0)	15	(93.7)	3	(75.0)
Unknown	.	(0.0)	.	(0.0)	.	(0.0)	.	(0.0)	.	(0.0)	.	(0.0)
Motels/Hotel												
Yes	12	(5.4)	4	(21.0)	1	(14.2)	5	(2.8)	1	(6.2)	.	(0.0)
No	209	(94.5)	15	(78.9)	6	(85.7)	173	(97.1)	15	(93.7)	4	(100.0)
Unknown	.	(0.0)	.	(0.0)	.	(0.0)	.	(0.0)	.	(0.0)	.	(0.0)
Streets												
Yes	16	(7.2)	5	(26.3)	2	(28.5)	9	(5.0)	1	(6.2)	.	(0.0)
No	205	(92.7)	14	(73.6)	5	(71.4)	169	(94.9)	15	(93.7)	4	(100.0)
Unknown	.	(0.0)	.	(0.0)	.	(0.0)	.	(0.0)	.	(0.0)	.	(0.0)
Internet												
Yes	52	(23.5)	.	(0.0)	.	(0.0)	40	(22.4)	.	(0.0)	1	(25.0)
No	169	(76.4)	19	(100.0)	7	(100.0)	138	(77.5)	16	(100.0)	3	(75.0)
Unknown	.	(0.0)	.	(0.0)	.	(0.0)	.	(0.0)	.	(0.0)	.	(0.0)
Parks												
Yes	10	(4.5)	2	(10.5)	.	(0.0)	5	(2.8)	.	(0.0)	.	(0.0)
No	211	(95.4)	17	(89.4)	7	(100.0)	173	(97.1)	16	(100.0)	4	(100.0)
Unknown	.	(0.0)	.	(0.0)	.	(0.0)	.	(0.0)	.	(0.0)	.	(0.0)
Home												
Yes	.	(0.0)	.	(0.0)	.	(0.0)	2	(1.1)	.	(0.0)	.	(0.0)
No	221	(100.0)	19	(100.0)	7	(100.0)	176	(98.8)	16	(100.0)	4	(100.0)
Other Venue												
Yes	38	(17.1)	3	(15.7)	2	(28.5)	34	(19.1)	2	(12.5)	1	(25.0)
No	183	(82.8)	16	(84.2)	5	(71.4)	144	(80.8)	14	(87.5)	3	(75.0)
Unknown	.	(0.0)	.	(0.0)	.	(0.0)	.	(0.0)	.	(0.0)	.	(0.0)
Total	221	(100.0)	19	(100.0)	7	(100.0)	178	(100.0)	16	(100.0)	4	(100.0)

¹ Venue risk information is available starting in 2001 and includes closed cases only. Excludes cases with no information on sexual partners.

² Had sex or met sex partners at defined venues during the period when syphilis infection likely occurred (critical period).

³ MSM refers to men who have sex with men; MSM/W is men who have sex with men and women; MSW is men who have sex with women; WSM refers to women who have sex with men; WSW is women who have sex with women; WSW/M is women who have sex with women and men. TG/STG refers to male-to-female (M to F) transgenders or to men or women who have sex with M to F transgenders.

Table 7. Venue Risk by Sexual Orientation ¹²³	2003					
	MSM & MSM/W		MSW		All Female	
	N	%	N	%	N	%
Bars and Clubs						
Yes	188	(96.4)	13	(100.0)	2	(66.6)
No	7	(3.5)	.	(0.0)	1	(33.3)
Unknown	.	(0.0)	.	(0.0)	.	(0.0)
Bathhouses/Sex Clubs						
Yes	37	(18.9)	.	(0.0)	.	(0.0)
No	158	(81.0)	13	(100.0)	3	(100.0)
Unknown	.	(0.0)	.	(0.0)	.	(0.0)
Motels/Hotel						
Yes	1	(0.5)	2	(15.3)	1	(33.3)
No	194	(99.4)	11	(84.6)	2	(66.6)
Unknown	.	(0.0)	.	(0.0)	.	(0.0)
Streets						
Yes	11	(5.6)	1	(7.6)	.	(0.0)
No	184	(94.3)	12	(92.3)	3	(100.0)
Unknown	.	(0.0)	.	(0.0)	.	(0.0)
Internet						
Yes	43	(22.0)	.	(0.0)	.	(0.0)
No	152	(77.9)	13	(100.0)	3	(100.0)
Unknown	.	(0.0)	.	(0.0)	.	(0.0)
Parks						
Yes	5	(2.5)	.	(0.0)	.	(0.0)
No	190	(97.4)	13	(100.0)	3	(100.0)
Unknown	.	(0.0)	.	(0.0)	.	(0.0)
Home						
Yes	.	(0.0)	.	(0.0)	.	(0.0)
No	195	(100.0)	13	(100.0)	3	(100.0)
Other Venue						
Yes	23	(11.7)	3	(23.0)	1	(33.3)
No	172	(88.2)	10	(76.9)	2	(66.6)
Unknown	.	(0.0)	.	(0.0)	.	(0.0)
Total	195	(100.0)	13	(100.0)	3	(100.0)

¹ Venue risk information is available starting in 2001 and includes closed cases only. Excludes cases with no information on sexual partners.

² Had sex or met sex partners at defined venues during the period when syphilis infection likely occurred (critical period).

³ MSM refers to men who have sex with men; MSM/W is men who have sex with men and women; MSW is men who have sex with women; WSM refers to women who have sex with men; WSW is women who have sex with women; WSW/M is women who have sex with women and men. TG/STG refers to male-to-female (M to F) transgenders or to men or women who have sex with M to F transgenders.

Table 8. Early Syphilis AND HIV Co-infection - All Cases ¹	2009						2008					
	CO-INFECTION						CO-INFECTION					
	ES/HIV		ES Only		Unknown		ES/HIV		ES Only		Unknown	
	N	%	N	%	N	%	N	%	N	%	N	%
Morbidity												
Total	901	(100.0)	701	(100.0)	69	(100.0)	806	(100.0)	587	(100.0)	82	(100.0)
Gender												
Male	882	(97.8)	611	(87.1)	55	(79.7)	797	(98.8)	504	(85.8)	70	(85.3)
Female	9	(0.9)	87	(12.4)	14	(20.2)	6	(0.7)	81	(13.7)	12	(14.6)
Transgender:F to M	.	(0.0)	.	(0.0)	.	(0.0)	.	(0.0)	.	(0.0)	.	(0.0)
Transgender:M to F	10	(1.1)	3	(0.4)	.	(0.0)	3	(0.3)	2	(0.3)	.	(0.0)
Sexual Orientation²												
MSM	759	(84.2)	422	(60.1)	29	(42.0)	645	(80.0)	324	(55.1)	32	(39.0)
MSM/W	22	(2.4)	35	(4.9)	.	(0.0)	28	(3.4)	33	(5.6)	1	(1.2)
MSW	21	(2.3)	118	(16.8)	5	(7.2)	32	(3.9)	118	(20.1)	7	(8.5)
WSM	8	(0.8)	80	(11.4)	8	(11.5)	3	(0.3)	77	(13.1)	10	(12.1)
WSW	.	(0.0)	1	(0.1)	1	(1.4)	.	(0.0)	1	(0.1)	.	(0.0)
WSW/M	.	(0.0)	4	(0.5)	.	(0.0)	1	(0.1)	.	(0.0)	.	(0.0)
TG/STG	10	(1.1)	5	(0.7)	.	(0.0)	3	(0.3)	2	(0.3)	.	(0.0)
Other	.	(0.0)	.	(0.0)	.	(0.0)	.	(0.0)	.	(0.0)	.	(0.0)
Refused	2	(0.2)	3	(0.4)	1	(1.4)	6	(0.7)	2	(0.3)	1	(1.2)
Unknown	79	(8.7)	33	(4.7)	25	(36.2)	88	(10.9)	30	(5.1)	31	(37.8)
Race/Ethnicity												
White	302	(33.5)	179	(25.5)	12	(17.3)	283	(35.1)	132	(22.4)	15	(18.2)
African-Amer.	134	(14.8)	119	(16.9)	11	(15.9)	115	(14.2)	101	(17.2)	12	(14.6)
Latina/o	382	(42.3)	330	(47.0)	31	(44.9)	342	(42.4)	299	(50.9)	40	(48.7)
Asian/Pac. Is.	32	(3.5)	27	(3.8)	2	(2.8)	22	(2.7)	17	(2.8)	1	(1.2)
Am.Ind/Alas.Nat.	3	(0.3)	2	(0.2)	.	(0.0)	3	(0.3)	1	(0.1)	.	(0.0)
Other/Mixed	4	(0.4)	4	(0.5)	.	(0.0)	6	(0.7)	2	(0.3)	.	(0.0)
Unknown	44	(4.8)	40	(5.7)	13	(18.8)	35	(4.3)	35	(5.9)	14	(17.0)
Age Group												
<15	.	(0.0)	2	(0.2)	.	(0.0)	.	(0.0)	1	(0.1)	.	(0.0)
15-19	6	(0.6)	33	(4.7)	.	(0.0)	8	(0.9)	37	(6.3)	6	(7.3)
20-24	69	(7.6)	145	(20.6)	5	(7.2)	54	(6.6)	128	(21.8)	15	(18.2)
25-29	134	(14.8)	143	(20.3)	9	(13.0)	143	(17.7)	99	(16.8)	11	(13.4)
30-34	122	(13.5)	99	(14.1)	12	(17.3)	107	(13.2)	80	(13.6)	7	(8.5)
35-39	145	(16.0)	66	(9.4)	10	(14.4)	149	(18.4)	91	(15.5)	10	(12.1)
40-44	184	(20.4)	80	(11.4)	14	(20.2)	162	(20.0)	64	(10.9)	17	(20.7)
45-49	127	(14.0)	59	(8.4)	8	(11.5)	102	(12.6)	47	(8.0)	8	(9.7)
50-54	62	(6.8)	35	(4.9)	6	(8.6)	50	(6.2)	23	(3.9)	3	(3.6)
55-59	38	(4.2)	19	(2.7)	1	(1.4)	19	(2.3)	6	(1.0)	4	(4.8)
60 +	14	(1.5)	20	(2.8)	4	(5.7)	12	(1.4)	11	(1.8)	1	(1.2)

¹ As of 05/03/04, this report includes syphilis cases with a documented seroconversion or fourfold or greater increase in titer of a nontreponemal test during the previous 12 months (See Appendix A).

² MSM refers to men who have sex with men; MSM/W is men who have sex with men and women; MSW is men who have sex with women; WSM refers to women who have sex with men; WSW is women who have sex with women; WSW/M is women who have sex with women and men. TG/STG refers to male-to-female (M to F) transgenders or to men or women who have sex with M to F transgenders.

³ Documented and Self-reported status collected during field interview.

*Excludes Long Beach and Pasadena health jurisdictions.

Table 8. Early Syphilis AND HIV Co-infection - All Cases ¹	2007						2006					
	CO-INFECTION						CO-INFECTION					
	ES/HIV		ES Only		Unknown		ES/HIV		ES Only		Unknown	
	N	%	N	%	N	%	N	%	N	%	N	%
Morbidity												
Total	794	(100.0)	622	(100.0)	225	(100.0)	715	(100.0)	480	(100.0)	347	(100.0)
Gender												
Male	782	(98.4)	502	(80.7)	180	(80.0)	702	(98.1)	369	(76.8)	285	(82.1)
Female	7	(0.8)	118	(18.9)	45	(20.0)	8	(1.1)	108	(22.5)	61	(17.5)
Transgender:F to M	1	(0.1)	.	(0.0)	.	(0.0)	.	(0.0)	.	(0.0)	.	(0.0)
Transgender:M to F	4	(0.5)	2	(0.3)	.	(0.0)	5	(0.6)	3	(0.6)	1	(0.2)
Sexual Orientation²												
MSM	663	(83.5)	314	(50.4)	66	(29.3)	577	(80.6)	199	(41.4)	122	(35.1)
MSM/W	33	(4.1)	31	(4.9)	11	(4.8)	25	(3.4)	21	(4.3)	9	(2.5)
MSW	29	(3.6)	131	(21.0)	47	(20.8)	23	(3.2)	131	(27.2)	55	(15.8)
WSM	5	(0.6)	111	(17.8)	37	(16.4)	6	(0.8)	91	(18.9)	34	(9.7)
WSW	.	(0.0)	.	(0.0)	.	(0.0)	1	(0.1)	.	(0.0)	.	(0.0)
WSW/M	.	(0.0)	2	(0.3)	.	(0.0)	.	(0.0)	3	(0.6)	1	(0.2)
TG/STG	5	(0.6)	3	(0.4)	.	(0.0)	6	(0.8)	3	(0.6)	1	(0.2)
Other	.	(0.0)	1	(0.1)	.	(0.0)	.	(0.0)	.	(0.0)	.	(0.0)
Refused	2	(0.2)	2	(0.3)	1	(0.4)	5	(0.6)	.	(0.0)	5	(1.4)
Unknown	57	(7.1)	27	(4.3)	63	(28.0)	72	(10.0)	32	(6.6)	120	(34.5)
Race/Ethnicity												
White	276	(34.7)	148	(23.7)	53	(23.5)	260	(36.3)	128	(26.6)	109	(31.4)
African-Amer.	121	(15.2)	127	(20.4)	63	(28.0)	107	(14.9)	108	(22.5)	86	(24.7)
Latina/o	346	(43.5)	307	(49.3)	84	(37.3)	299	(41.8)	215	(44.7)	118	(34.0)
Asian/Pac. Is.	22	(2.7)	20	(3.2)	8	(3.5)	17	(2.3)	6	(1.2)	7	(2.0)
Am.Ind/Alas.Nat.	1	(0.1)	.	(0.0)	.	(0.0)	3	(0.4)	4	(0.8)	.	(0.0)
Other/Mixed	3	(0.3)	4	(0.6)	.	(0.0)	.	(0.0)	4	(0.8)	1	(0.2)
Unknown	25	(3.1)	16	(2.5)	17	(7.5)	29	(4.0)	15	(3.1)	26	(7.4)
Age Group												
<15	.	(0.0)	.	(0.0)	.	(0.0)	.	(0.0)	1	(0.2)	.	(0.0)
15-19	12	(1.5)	27	(4.3)	11	(4.8)	8	(1.1)	18	(3.7)	13	(3.7)
20-24	49	(6.1)	137	(22.0)	31	(13.7)	34	(4.7)	61	(12.7)	33	(9.5)
25-29	112	(14.1)	116	(18.6)	32	(14.2)	83	(11.6)	79	(16.4)	52	(14.9)
30-34	111	(13.9)	98	(15.7)	36	(16.0)	85	(11.8)	66	(13.7)	36	(10.3)
35-39	164	(20.6)	79	(12.7)	29	(12.8)	192	(26.8)	84	(17.5)	62	(17.8)
40-44	159	(20.0)	69	(11.0)	37	(16.4)	167	(23.3)	67	(13.9)	52	(14.9)
45-49	90	(11.3)	44	(7.0)	26	(11.5)	82	(11.4)	45	(9.3)	49	(14.1)
50-54	58	(7.3)	29	(4.6)	9	(4.0)	48	(6.7)	22	(4.5)	25	(7.2)
55-59	24	(3.0)	12	(1.9)	9	(4.0)	11	(1.5)	14	(2.9)	13	(3.7)
60 +	15	(1.8)	11	(1.7)	5	(2.2)	5	(0.6)	23	(4.7)	12	(3.4)

¹ As of 05/03/04, this report includes syphilis cases with a documented seroconversion or fourfold or greater increase in titer of a nontreponemal test during the previous 12 months (See Appendix A).

² MSM refers to men who have sex with men; MSM/W is men who have sex with men and women; MSW is men who have sex with women; WSM refers to women who have sex with men; WSW is women who have sex with women; WSW/M is women who have sex with women and men. TG/STG refers to male-to-female (M to F) transgenders or to men or women who have sex with M to F transgenders.

³ Documented and Self-reported status collected during field interview.

*Excludes Long Beach and Pasadena health jurisdictions.

Table 8. Early Syphilis AND HIV Co-infection - All Cases ¹	2005						2004					
	CO-INFECTION						CO-INFECTION					
	ES/HIV		ES Only		Unknown		ES/HIV		ES Only		Unknown	
	N	%	N	%	N	%	N	%	N	%	N	%
Morbidity												
Total	589	(100.0)	420	(100.0)	224	(100.0)	398	(100.0)	291	(100.0)	170	(100.0)
Gender												
Male	584	(99.1)	327	(77.8)	181	(80.8)	395	(99.2)	236	(81.0)	135	(79.4)
Female	2	(0.3)	92	(21.9)	42	(18.7)	1	(0.2)	54	(18.5)	35	(20.5)
Transgender:F to M	.	(0.0)	.	(0.0)	.	(0.0)	.	(0.0)	.	(0.0)	.	(0.0)
Transgender:M to F	3	(0.5)	1	(0.2)	1	(0.4)	2	(0.5)	1	(0.3)	.	(0.0)
Sexual Orientation²												
MSM	489	(83.0)	209	(49.7)	66	(29.4)	345	(86.6)	134	(46.0)	65	(38.2)
MSM/W	20	(3.3)	19	(4.5)	9	(4.0)	20	(5.0)	17	(5.8)	2	(1.1)
MSW	17	(2.8)	86	(20.4)	33	(14.7)	11	(2.7)	80	(27.4)	22	(12.9)
WSM	2	(0.3)	83	(19.7)	20	(8.9)	1	(0.2)	48	(16.4)	23	(13.5)
WSW	.	(0.0)	3	(0.7)	.	(0.0)	.	(0.0)	1	(0.3)	.	(0.0)
WSW/M	.	(0.0)	3	(0.7)	.	(0.0)	.	(0.0)	3	(1.0)	.	(0.0)
TG/STG	3	(0.5)	1	(0.2)	1	(0.4)	2	(0.5)	1	(0.3)	.	(0.0)
Other	.	(0.0)	.	(0.0)	.	(0.0)	.	(0.0)	.	(0.0)	.	(0.0)
Refused	5	(0.8)	.	(0.0)	3	(1.3)	2	(0.5)	.	(0.0)	1	(0.5)
Unknown	53	(8.9)	16	(3.8)	92	(41.0)	17	(4.2)	7	(2.4)	57	(33.5)
Race/Ethnicity												
White	245	(41.5)	130	(30.9)	67	(29.9)	188	(47.2)	85	(29.2)	47	(27.6)
African-Amer.	73	(12.3)	110	(26.1)	56	(25.0)	54	(13.5)	60	(20.6)	47	(27.6)
Latina/o	222	(37.6)	155	(36.9)	75	(33.4)	134	(33.6)	129	(44.3)	60	(35.2)
Asian/Pac. Is.	24	(4.0)	7	(1.6)	6	(2.6)	12	(3.0)	9	(3.0)	5	(2.9)
Am.Ind/Alas.Nat.	1	(0.1)	.	(0.0)	.	(0.0)	1	(0.2)	1	(0.3)	1	(0.5)
Other/Mixed	4	(0.6)	1	(0.2)	.	(0.0)	2	(0.5)	1	(0.3)	.	(0.0)
Unknown	20	(3.3)	17	(4.0)	20	(8.9)	7	(1.7)	6	(2.0)	10	(5.8)
Age Group												
<15	.	(0.0)	.	(0.0)	.	(0.0)	.	(0.0)	1	(0.3)	.	(0.0)
15-19	.	(0.0)	21	(5.0)	7	(3.1)	.	(0.0)	17	(5.8)	5	(2.9)
20-24	38	(6.4)	55	(13.0)	30	(13.3)	24	(6.0)	54	(18.5)	16	(9.4)
25-29	53	(8.9)	64	(15.2)	26	(11.6)	28	(7.0)	60	(20.6)	21	(12.3)
30-34	89	(15.1)	74	(17.6)	36	(16.0)	59	(14.8)	43	(14.7)	27	(15.8)
35-39	145	(24.6)	74	(17.6)	31	(13.8)	119	(29.8)	40	(13.7)	32	(18.8)
40-44	150	(25.4)	56	(13.3)	43	(19.1)	101	(25.3)	37	(12.7)	34	(20.0)
45-49	61	(10.3)	36	(8.5)	23	(10.2)	32	(8.0)	18	(6.1)	19	(11.1)
50-54	31	(5.2)	16	(3.8)	11	(4.9)	23	(5.7)	8	(2.7)	10	(5.8)
55-59	14	(2.3)	12	(2.8)	7	(3.1)	7	(1.7)	7	(2.4)	1	(0.5)
60 +	8	(1.3)	12	(2.8)	10	(4.4)	5	(1.2)	6	(2.0)	5	(2.9)

¹ As of 05/03/04, this report includes syphilis cases with a documented seroconversion or fourfold or greater increase in titer of a nontreponemal test during the previous 12 months (See Appendix A).

² MSM refers to men who have sex with men; MSM/W is men who have sex with men and women; MSW is men who have sex with women; WSM refers to women who have sex with men; WSW is women who have sex with women; WSW/M is women who have sex with women and men. TG/STG refers to male-to-female (M to F) transgenders or to men or women who have sex with M to F transgenders.

³ Documented and Self-reported status collected during field interview.

*Excludes Long Beach and Pasadena health jurisdictions.

Table 8. Early Syphilis AND HIV Co-infection - All Cases ¹	2003						2002					
	CO-INFECTION						CO-INFECTION					
	ES/HIV		ES Only		Unknown		ES/HIV		ES Only		Unknown	
	N	%	N	%	N	%	N	%	N	%	N	%
Morbidity												
Total	370	(100.0)	295	(100.0)	175	(100.0)	338	(100.0)	235	(100.0)	150	(100.0)
Gender												
Male	365	(98.6)	237	(80.3)	155	(88.5)	336	(99.4)	195	(82.9)	128	(85.3)
Female	2	(0.5)	58	(19.6)	20	(11.4)	2	(0.5)	40	(17.0)	22	(14.6)
Transgender:F to M	.	(0.0)	.	(0.0)	.	(0.0)	.	(0.0)	.	(0.0)	.	(0.0)
Transgender:M to F	3	(0.8)	.	(0.0)	.	(0.0)	.	(0.0)	.	(0.0)	.	(0.0)
Sexual Orientation²												
MSM	318	(85.9)	151	(51.1)	66	(37.7)	294	(86.9)	123	(52.3)	66	(44.0)
MSM/W	18	(4.8)	16	(5.4)	7	(4.0)	13	(3.8)	21	(8.9)	4	(2.6)
MSW	6	(1.6)	62	(21.0)	14	(8.0)	7	(2.0)	44	(18.7)	19	(12.6)
WSM	2	(0.5)	55	(18.6)	9	(5.1)	2	(0.5)	38	(16.1)	16	(10.6)
WSW	.	(0.0)	2	(0.6)	.	(0.0)	.	(0.0)	.	(0.0)	.	(0.0)
WSW/M	.	(0.0)	.	(0.0)	.	(0.0)	.	(0.0)	.	(0.0)	.	(0.0)
TG/STG	3	(0.8)	.	(0.0)	.	(0.0)	.	(0.0)	.	(0.0)	.	(0.0)
Other	.	(0.0)	.	(0.0)	.	(0.0)	.	(0.0)	.	(0.0)	.	(0.0)
Refused	.	(0.0)	.	(0.0)	1	(0.5)	2	(0.5)	1	(0.4)	.	(0.0)
Unknown	23	(6.2)	9	(3.0)	78	(44.5)	20	(5.9)	8	(3.4)	45	(30.0)
Race/Ethnicity												
White	163	(44.0)	110	(37.2)	65	(37.1)	156	(46.1)	81	(34.4)	43	(28.6)
African-Amer.	49	(13.2)	46	(15.5)	25	(14.2)	29	(8.5)	44	(18.7)	31	(20.6)
Latina/o	134	(36.2)	126	(42.7)	63	(36.0)	135	(39.9)	92	(39.1)	60	(40.0)
Asian/Pac. Is.	10	(2.7)	10	(3.3)	7	(4.0)	8	(2.3)	10	(4.2)	6	(4.0)
Am.Ind/Alas.Nat.	2	(0.5)	.	(0.0)	.	(0.0)	2	(0.5)	2	(0.8)	.	(0.0)
Other/Mixed	.	(0.0)	.	(0.0)	.	(0.0)	.	(0.0)	.	(0.0)	.	(0.0)
Unknown	12	(3.2)	3	(1.0)	15	(8.5)	8	(2.3)	6	(2.5)	10	(6.6)
Age Group												
<15	.	(0.0)	.	(0.0)	.	(0.0)	1	(0.2)	.	(0.0)	.	(0.0)
15-19	.	(0.0)	13	(4.4)	5	(2.8)	1	(0.2)	16	(6.8)	3	(2.0)
20-24	13	(3.5)	50	(16.9)	10	(5.7)	16	(4.7)	39	(16.5)	19	(12.6)
25-29	34	(9.1)	41	(13.8)	21	(12.0)	36	(10.6)	29	(12.3)	20	(13.3)
30-34	61	(16.4)	45	(15.2)	35	(20.0)	75	(22.1)	38	(16.1)	23	(15.3)
35-39	116	(31.3)	67	(22.7)	30	(17.1)	87	(25.7)	42	(17.8)	29	(19.3)
40-44	74	(20.0)	37	(12.5)	34	(19.4)	65	(19.2)	36	(15.3)	21	(14.0)
45-49	46	(12.4)	19	(6.4)	15	(8.5)	29	(8.5)	20	(8.5)	21	(14.0)
50-54	19	(5.1)	13	(4.4)	14	(8.0)	21	(6.2)	8	(3.4)	7	(4.6)
55-59	7	(1.8)	8	(2.7)	4	(2.2)	5	(1.4)	4	(1.7)	4	(2.6)
60 +	.	(0.0)	2	(0.6)	7	(4.0)	2	(0.5)	3	(1.2)	3	(2.0)

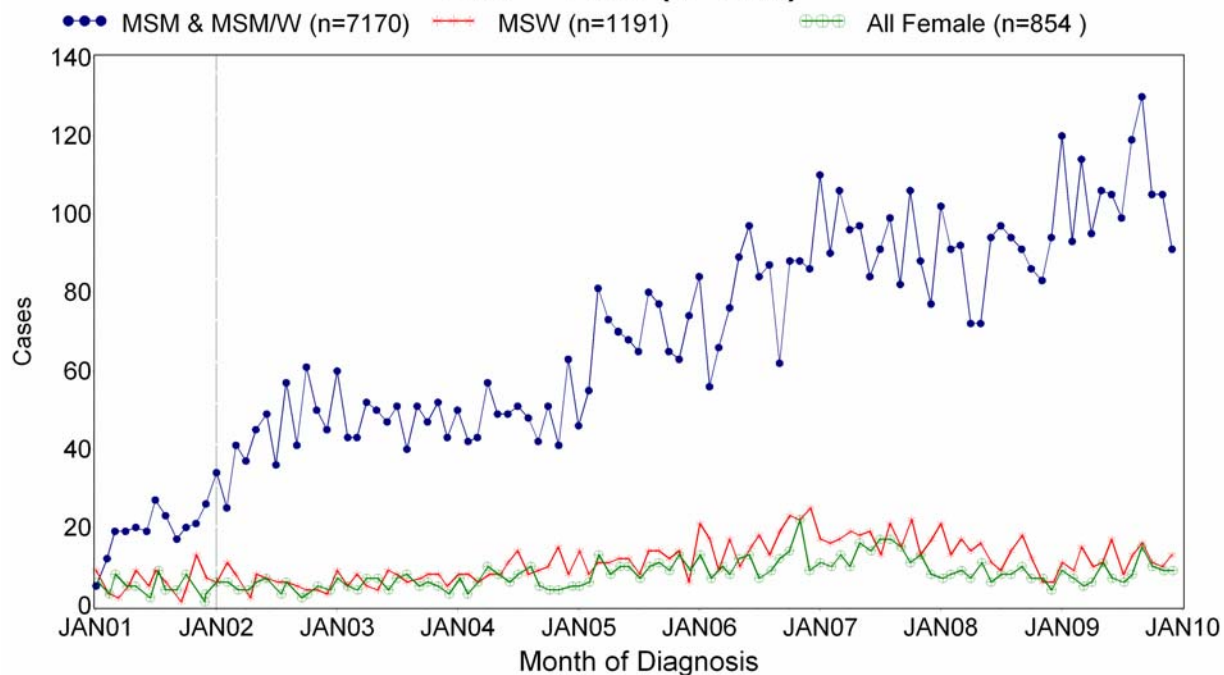
¹ As of 05/03/04, this report includes syphilis cases with a documented seroconversion or fourfold or greater increase in titer of a nontreponemal test during the previous 12 months (See Appendix A).

² MSM refers to men who have sex with men; MSM/W is men who have sex with men and women; MSW is men who have sex with women; WSM refers to women who have sex with men; WSW is women who have sex with women; WSW/M is women who have sex with women and men. TG/STG refers to male-to-female (M to F) transgenders or to men or women who have sex with M to F transgenders.

³ Documented and Self-reported status collected during field interview.

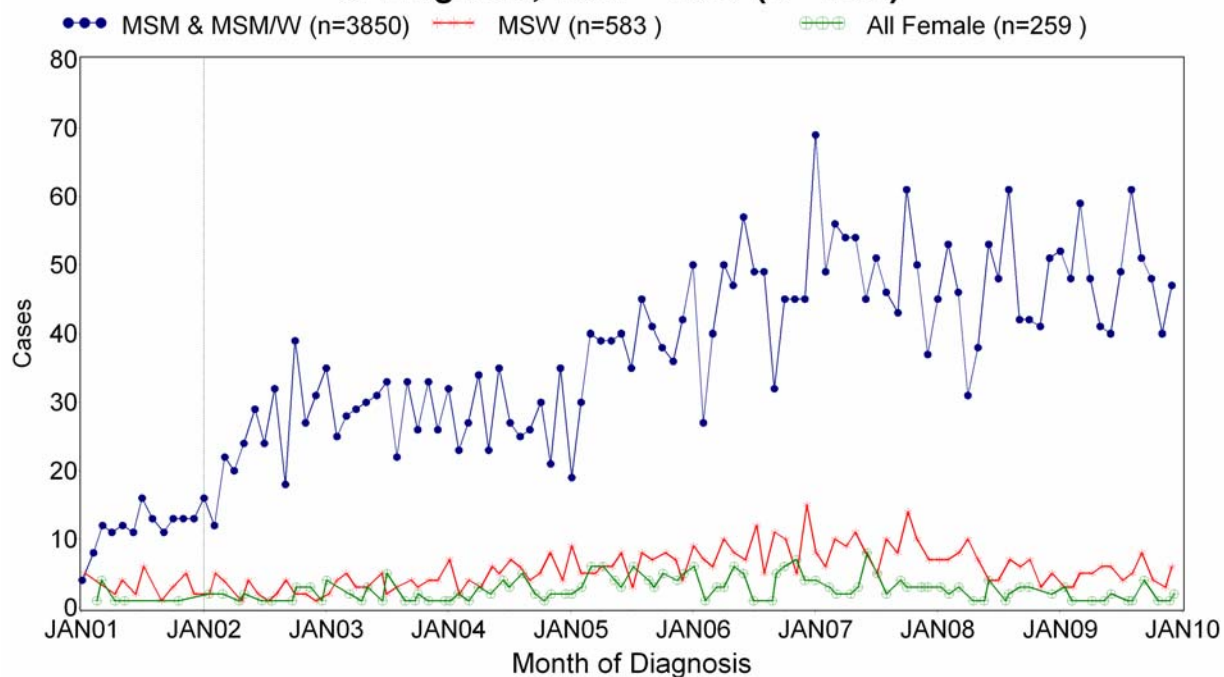
*Excludes Long Beach and Pasadena health jurisdictions.

Figure 1: Early Syphilis by Sexual Orientation* and Month of Diagnosis, 2001 – 2009 (N= 9215)



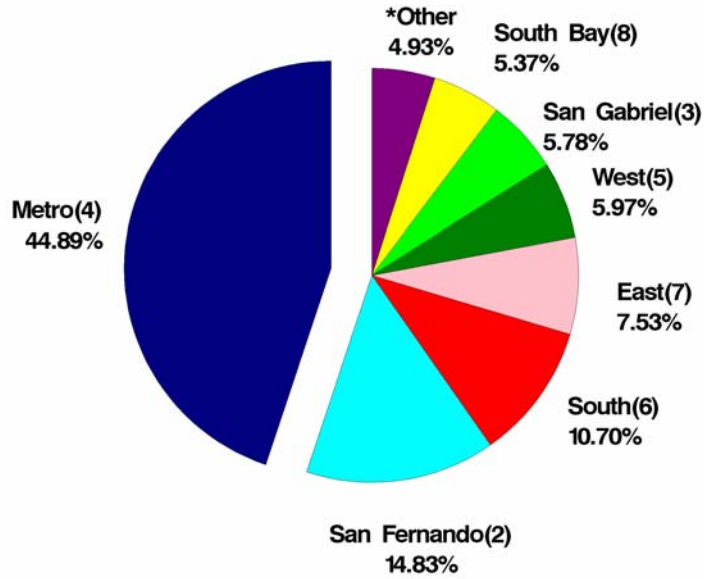
* Does not include cases lacking partner information.

Figure 2: Primary and Secondary Syphilis by Sexual Orientation* and Month of Diagnosis, 2001– 2009 (N= 4692)

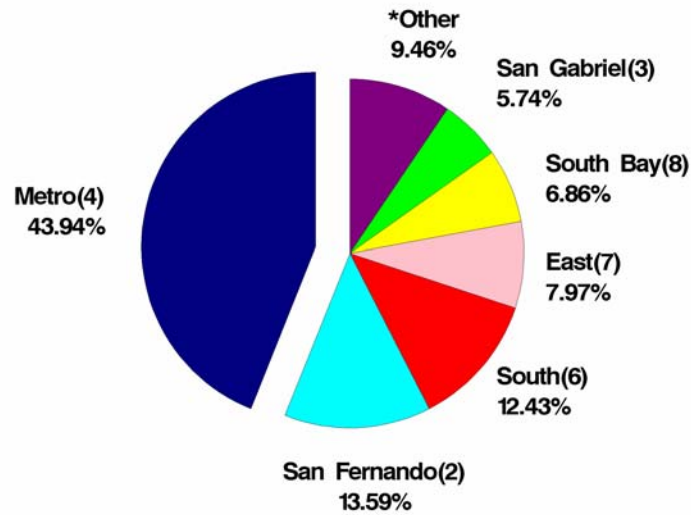


* Does not include cases lacking partner information.

**Figure 3: Primary and Secondary Syphilis by SPA*
2001 – 2009 (N= 5,177)**

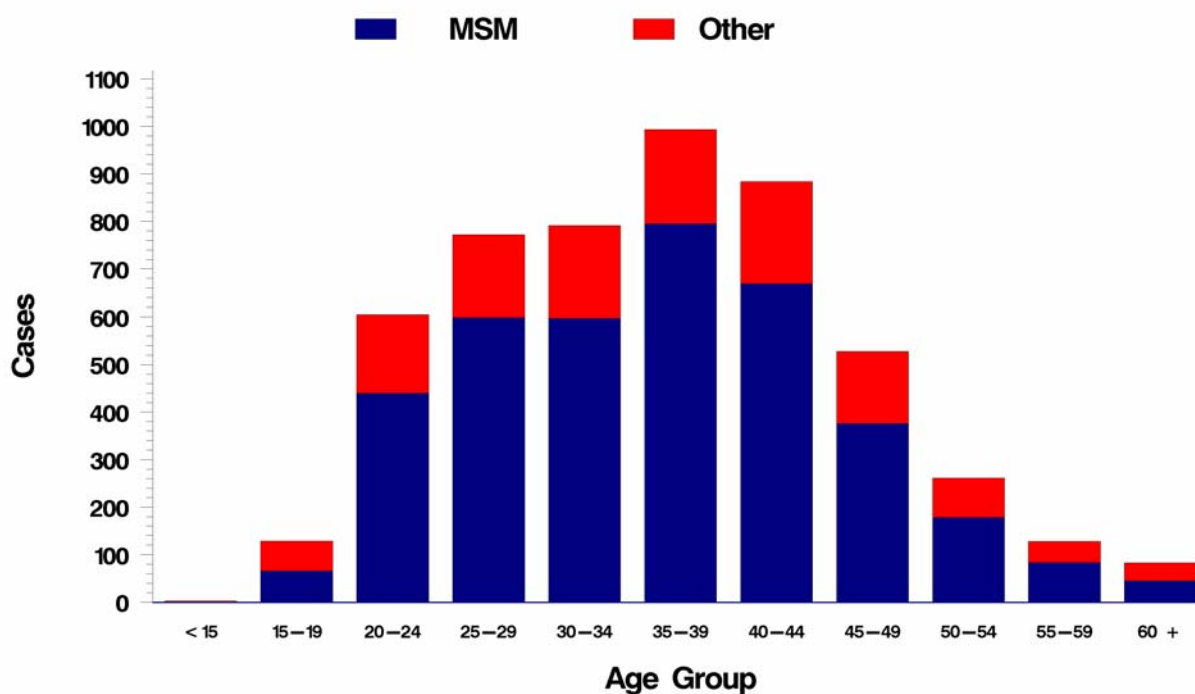


**Figure 4: Early Latent Syphilis by SPA*
2001 – 2009 (N= 5,230)**

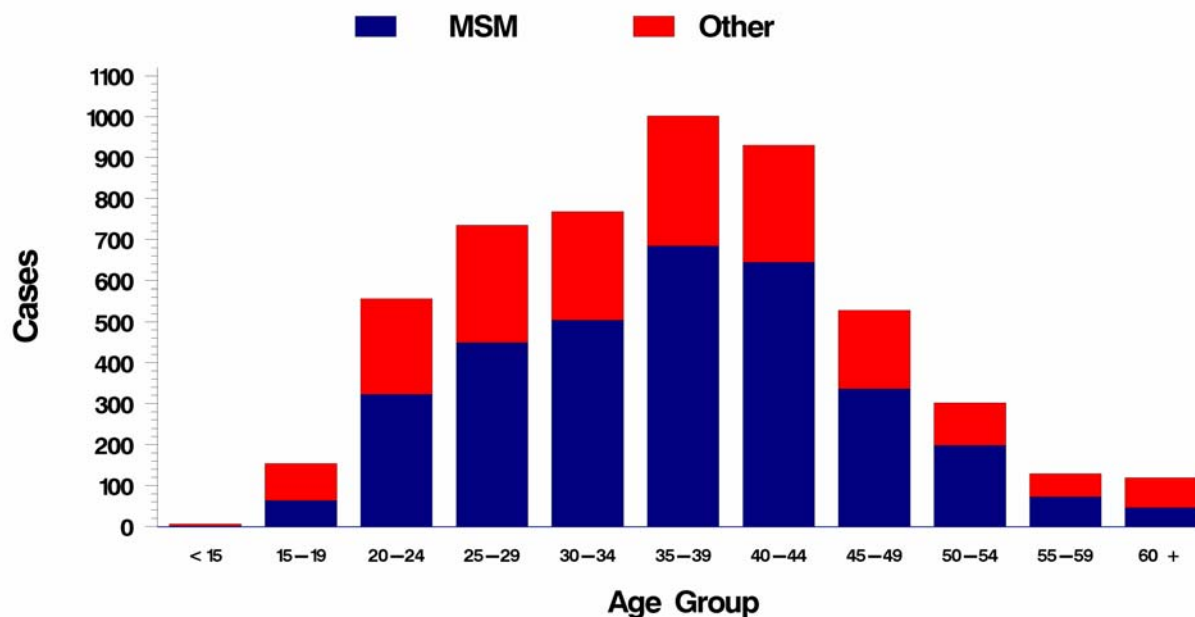


* SPAs having less than 5% of total cases are included in the 'Other' category.
Table 2 contains numbers and percentages for all SPAs and Health Districts.

**Figure 5: Primary & Secondary Syphilis by Age Group & Sexual Orientation*
2001 – 2009 (N= 5177)**



**Figure 6: Early Latent Syphilis by Age Group & Sexual Orientation*,
2001 – 2009 (N= 5230)**



* MSM includes MSM, MSM/W, and TG/STG. Other includes all other sexual orientation, including unknown.

Figure 7: Primary & Secondary Syphilis by Race/Ethnicity & Sexual Orientation*, 2001 – 2009 (N= 5177)

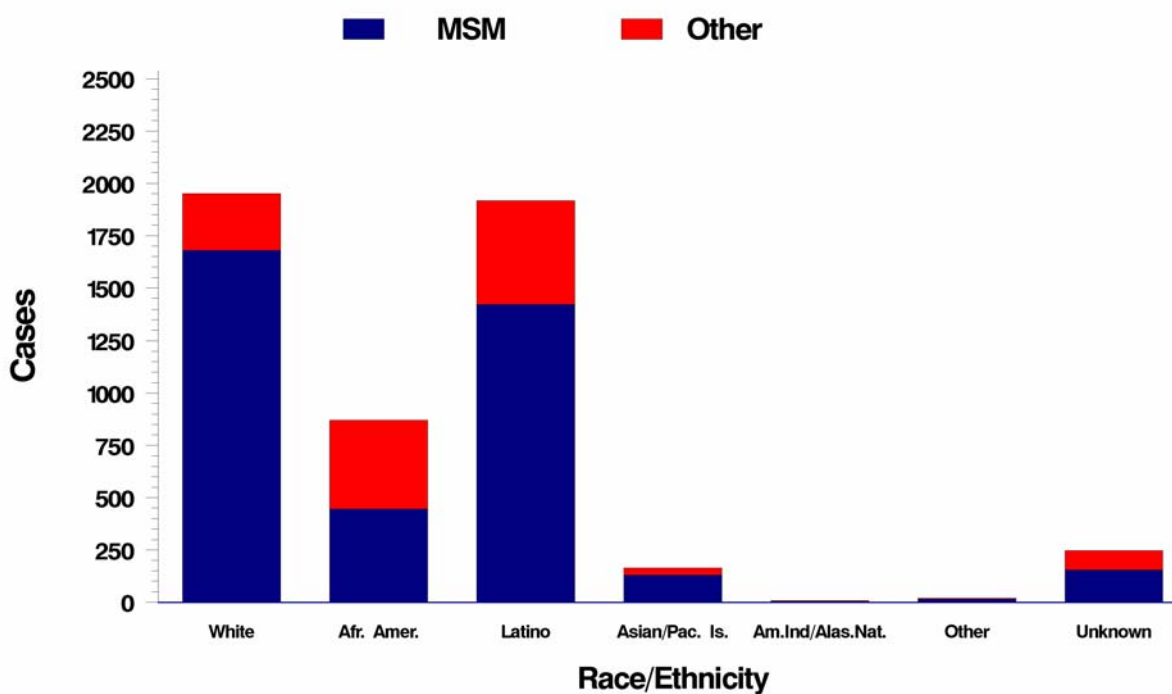
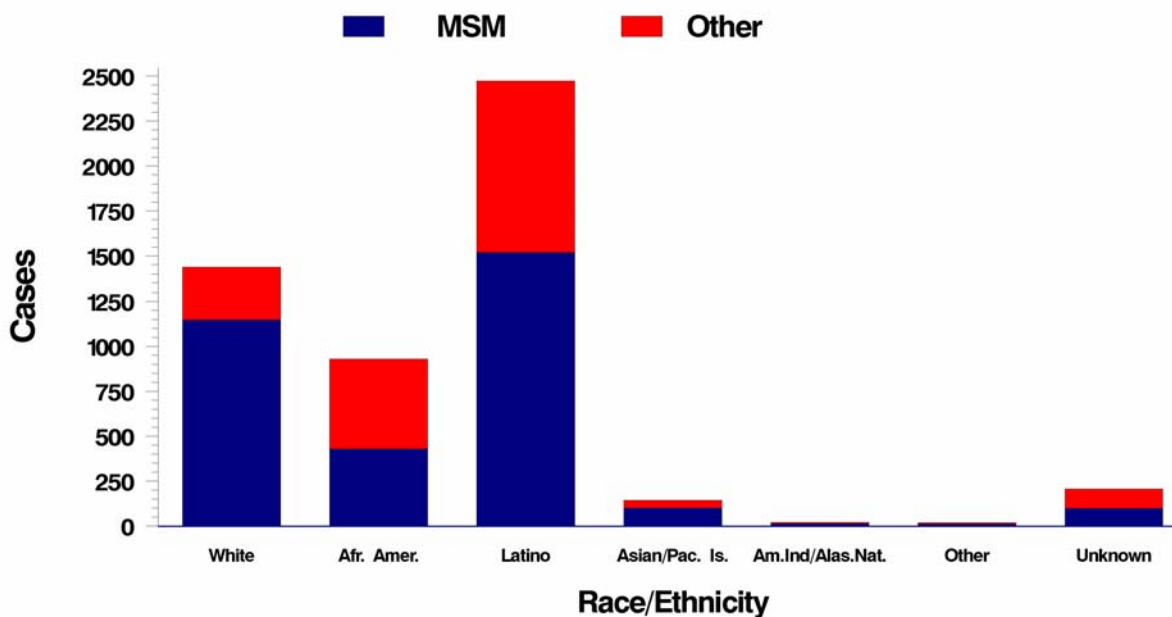


Figure 8: Early Latent Syphilis by Race/Ethnicity & Sexual Orientation*, 2001 – 2009 (N= 5230)



* MSM includes MSM, MSM/W, and TG/STG. Other includes all other sexual orientation, including unknown.

Figure 9: Primary & Secondary Syphilis by HIV Status** & Sexual Orientation*, 2001 – 2009 (N= 5177)

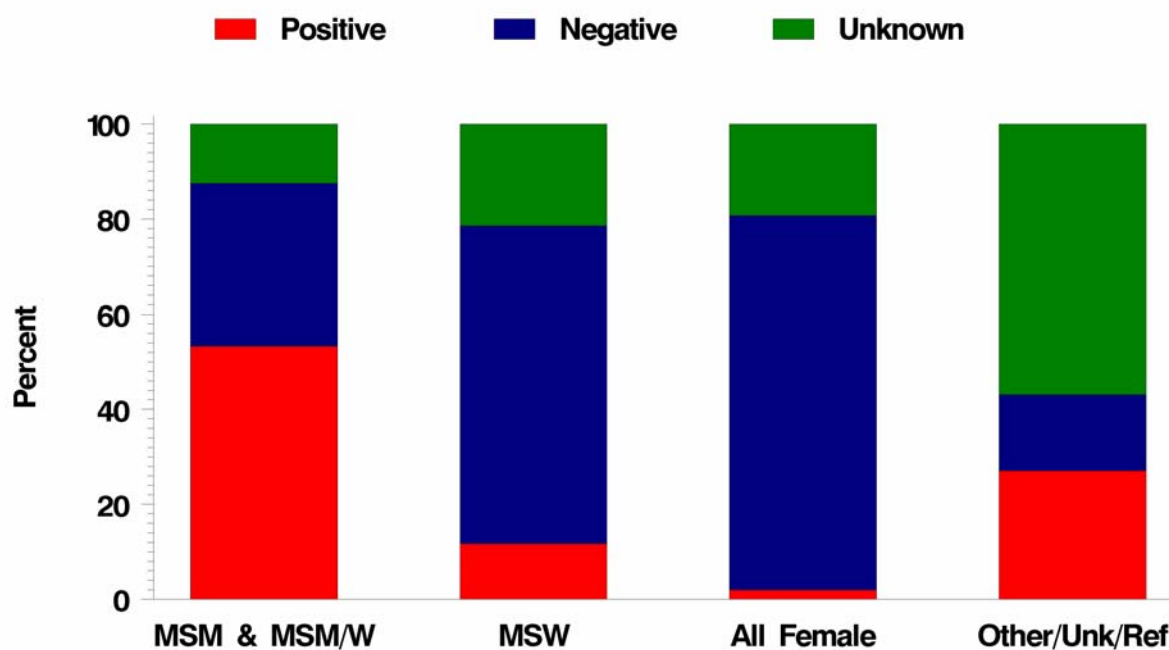
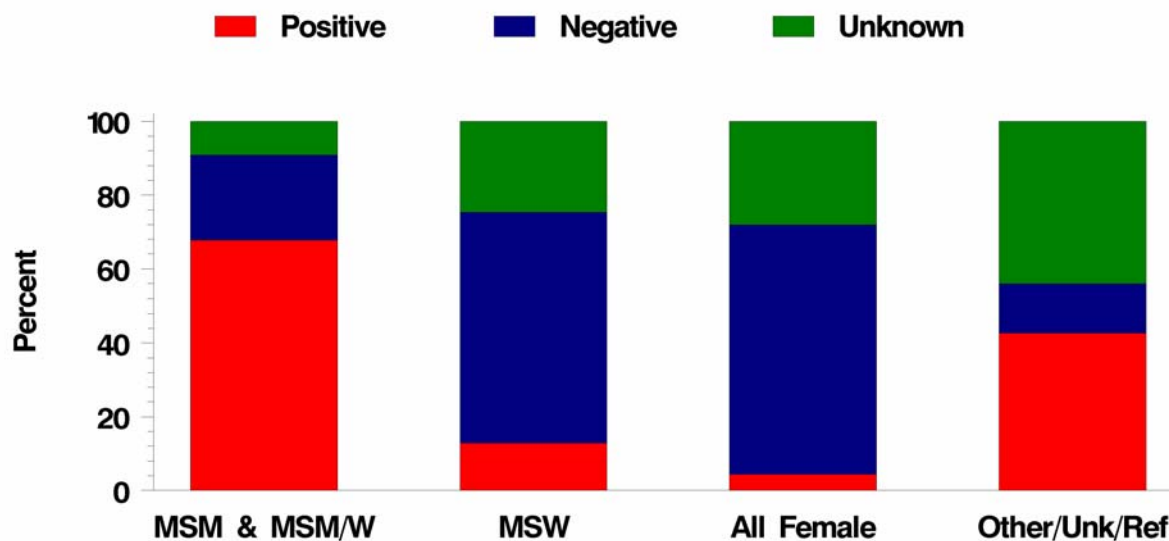


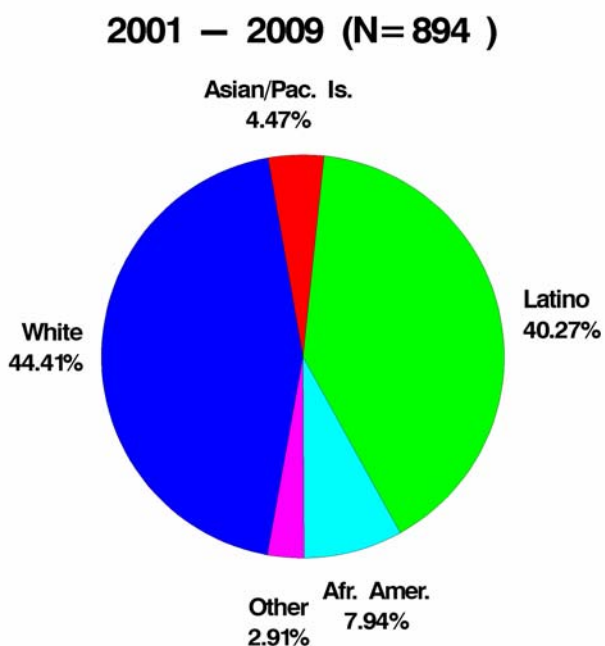
Figure 10: Early Latent Syphilis by HIV Status** & Sexual Orientation*, 2001 – 2009 (N= 5230)



* MSM includes MSM, MSM/W, and TG/STG.

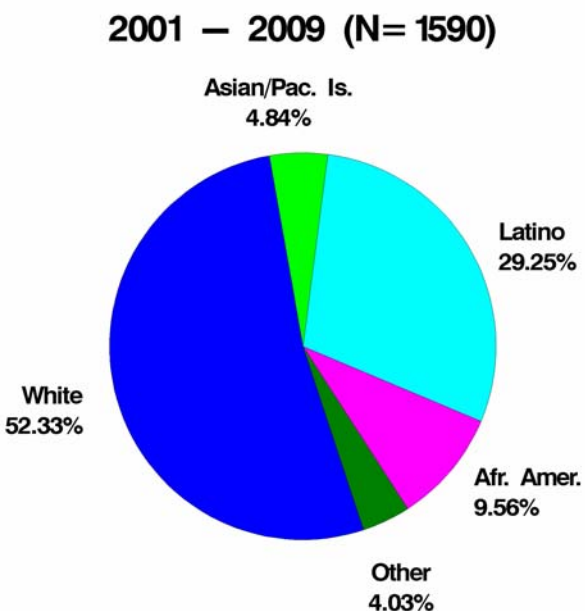
** HIV status is self reported.

Figure 11: Race/Ethnicity of Early Syphilis Cases Who Met Their Sexual partners Bathhouses or Sex Clubs During the Critical Period*



* The time during which the case was likely to acquire or transmit syphilis.

Figure 12: Race/Ethnicity of Early Syphilis Cases Who Met their Sexual Partners Through the Internet During the Critical Period*



* The time during which the case was likely to acquire or transmit syphilis.

APPENDIX A: SURVEILLANCE NOTES

REPORT DELAY

Report delay is defined as the time interval between the date a syphilis diagnosis was made and the date the case was reported to the Health Department. Currently, the mean reporting delay for early syphilis is 17 days and the 95th percentile is 36 days. The impact of report delay must be considered when interpreting the data.

DATABASE UPDATE

Total may not be consistent with previous reports of previous years due to report delay and periodic update of the data base, including late reporting, changes in diagnosis and some deletion of duplicates.

EXCEPTIONS

The following exceptions exist in the database used to generate the tables for the 2010 year to date data.

- There are 146 reported syphilis cases that are still opened for investigation or are closure review queued.
- Of the 146 opened or closure review queued cases 78 are cases with out diagnosis pending investigation and 68 cases are under closure review.

APPENDIX B: EARLY SYPHILIS CASE DEFINITION FOR INFECTIOUS CONDITIONS UNDER PUBLIC HEALTH SURVEILLANCE¹

State and local public health officials rely on health-care providers, laboratories, and other public health personnel to report the occurrence of reportable diseases to state and local health departments. Without such data, trends cannot be accurately monitored, unusual occurrences of diseases might not be detected, and the effectiveness of intervention activities cannot be easily evaluated.

The usefulness of public health surveillance data depends on its uniformity, simplicity, and timeliness. This case definition was established for uniform criteria for disease reporting and should not be used as the sole criteria for establishing clinical diagnoses, determining the standard of care necessary for a particular patient, setting guidelines for quality assurance, or providing standards for reimbursement. Use of additional clinical, epidemiological and laboratory data may enable a physician to diagnose a disease even though the formal surveillance case definition may not be met.

This case definition was developed in collaboration with epidemiologists at the Centers for Disease Control and Prevention (CDC) and the Council of State and Territorial Epidemiologists (CSTE). It was approved by a full vote of the CSTE membership and also endorsed for use by the Association of Public Health Laboratories (APHL).

EARLY SYPHILIS CASE DEFINITION

Early syphilis includes primary, secondary and early latent cases reported within less than one year from the date of infection.

Syphilis is a complex sexually transmitted disease that has a highly variable clinical course. Classification by a clinician with expertise in syphilis may take precedence over the following case definitions developed for surveillance purposes.

PRIMARY SYPHILIS

Clinical description: A stage of infection with *Treponema pallidum* characterized by one or more chancres (ulcers); chancres might differ considerably in clinical appearance.

Laboratory criteria for diagnosis: Demonstration of *T. pallidum* in clinical specimens by darkfield microscopy, direct fluorescent antibody (DFA-TP), or equivalent methods.

Case classification - Probable: A clinically compatible case with one or more ulcers (chancres) consistent with primary syphilis and a reactive serologic test (nontreponemal:

Venereal Disease Research Laboratory [VDRL] or rapid plasma reagin [RPR]; treponemal: fluorescent treponemal antibody absorbed [FTA-ABS] or microhemagglutination assay for antibody to *T. pallidum* [MHA-TP]).

¹ Source: Case Definitions for Infectious Conditions Under Public Health Surveillance, MMWR, May 2, 1997, Vol. 46, No. RR-10.

Case classification - Confirmed: A clinically compatible case that is laboratory confirmed.

SECONDARY SYPHILIS

Clinical description: A stage of infection caused by *T. pallidum* and characterized by localized or diffuse mucocutaneous lesions, often with generalized lymphadenopathy. The primary chancre may still be present.

Laboratory criteria for diagnosis: Demonstration of *T. pallidum* in clinical specimens by dark field microscopy, DFA-TP, or equivalent methods.

Case classification - Probable: A clinically compatible case with a nontreponemal (VDRL or RPR) titer.

Case classification - Confirmed: A clinically compatible case that is laboratory confirmed.

EARLY LATENT SYPHILIS

Clinical description: A stage of infection caused by *T. pallidum* in which organisms persist in the body of the infected person without causing symptoms or signs. Latent syphilis is subdivided into early, late and unknown categories based on the duration of infection. When initial infection has occurred within the previous 12 months, latent syphilis is classified as early latent.

Case classification - Probable: Latent syphilis in a person who has evidence of having acquired the infection within the previous 12 months based on one or more of the following criteria:

- Documented seroconversion or fourfold or greater increase in titer of a nontreponemal test during the previous 12 months
- A history of symptoms consistent with primary or secondary syphilis during the previous 12 months
- A history of sexual exposure to a partner who had confirmed or probable primary or secondary syphilis or probable early latent syphilis (documented independently as duration <1 year)
- Reactive nontreponemal and treponemal tests from a person whose only possible exposure occurred within the preceding 12 months

APPENDIX C: WHERE TO REPORT COMMUNICABLE DISEASES IN LOS ANGELES COUNTY

LABORATORY SLIP	CLINICIAN'S CMR	SEND REPORTS TO:
Syphilis Chlamydia Gonorrhea	Syphilis Chlamydia Gonorrhea Chancroid Non-gonococcal Urethritis Pelvic Inflammatory Disease	Sexually Transmitted Disease Program 2615 S. Grand Avenue, Rm. 450 Los Angeles, CA 90007 Telephone: 213-744-3070 Fax: 213-749-9602
AIDS HIV (Name-based reporting as of 4/17/06)	AIDS HIV (Name-based reporting as of 4/17/06)	HIV Epidemiology Program 600 S. Commonwealth Ave., Suite 805 Los Angeles, CA 90005 Telephone: 213-351-8516 Fax: 213-467-4683 http://publichealth.lacounty.gov/hiv/hivreporting.htm
Tuberculosis	Tuberculosis	Tuberculosis Control 2615 S. Grand Avenue, Rm. 507 Los Angeles, CA 90007 Telephone: 213-744-6271 Fax: 213-749-0926
Cryptosporidiosis Diphtheria Encephalitis arboviral <i>E. coli</i> O157:H7 Hepatitis A, acute Hepatitis B, acute Listeriosis Malaria Measles (Rubeola) Plague Rabies Typhoid <i>Vibrio</i> Species	List of reportable diseases: http://publichealth.lacounty.gov/acd/cdrs.htm	Acute Communicable Diseases Morbidity Unit 313 N. Figueroa St., Rm. 117 Los Angeles, CA 90012 Telephone: 213-240-7821 Call toll free: 888-397-3993 Fax toll free: 888-397-3778
REQUIRED INFORMATION ON THE CMR: <ul style="list-style-type: none"> ✓ Patient Information: Name, gender, ethnic group, date of birth, occupation, address, telephone number, social security number. ✓ Diagnosis: Diagnosis, date of diagnosis, date of onset. ✓ Reporting Person: Name, address, telephone number 		

APPENDIX D: LOS ANGELES COUNTY STD SCREENING GUIDELINES FOR SEXUALLY ACTIVE HIV POSITIVE PERSONS

Due to the continuing rise in syphilis as well as gonorrhea and chlamydia, we recommend routine screening of HIV infected persons based on the following schedule in order to decrease the transmission of these curable STDs as well as HIV.

INITIAL VISIT AND ANNUAL VISIT

1. Testing should be performed for gonorrhea and chlamydia using urine testing for men and/or endocervical swab testing for women. Gonorrhea culture may also be used. Syphilis screening should be performed with an RPR.
 - a. Patients engaging in rectal intercourse should be cultured for GC and CT from the anal site. DFA may also be used for chlamydia.
 - b. Patients engaging in oral sex defined as activity in which they are orally exposed should be cultured for GC and CT from the pharyngeal area. DFA may also be used for chlamydia.
2. Women should be evaluated for the above, plus trichomoniasis using culture or vaginal wet mount.

FOLLOW-UP VISITS (EVERY 3 – 6 MONTHS)

HIV infected persons with symptoms of an STD should be screened upon presentation for care. Screening for syphilis, GC, and CT should be performed at 3 to 6 month intervals for persons at high risk for STDs but without STD symptoms. These persons include but are not limited to:

1. Persons with multiple or anonymous sex partners.
2. Persons with a past history of any STD.
3. Persons who have been recently incarcerated or those who have had sexual relations with someone recently incarcerated.
4. Persons reporting other behaviors associated with the transmission of HIV and other STDs. These include:
 - a. Participation in sexual activities in bathhouses, sex clubs or circuit parties.
 - b. Use of the internet to recruit sex partners.
 - c. Engaging in sexual activity for money or drugs.
 - d. Use of sexual enhancement drugs such as methamphetamines (i.e., meth, glass, crystal), ecstasy, ketamine, viagra, cocaine, crack, GHB, and nitrates/poppers.
5. Persons with sex or needle sharing partner(s) with any of the above risks.
6. Persons using injection drugs.
7. Persons living on the street/homeless.
8. Person living in areas with high STD prevalence. Sexually active gay men in the Los Angeles area are considered high risk.

APPENDIX E:

RECOMMENDATIONS TO ENHANCE STD DETECTION AND IMPROVE STD SURVEILLANCE

Improved quality, completeness, and timeliness of STD surveillance can provide critical information to target early STD detection and treatment and prevention strategies. Improved quality, completeness, and timeliness of STD surveillance can provide critical information to target early STD detection and treatment and prevention strategies. Expanded early detection of STDs within a jurisdiction should lead to more complete STD surveillance data, which could be an important element of the epidemiologic profile used by prevention community planning groups.

Any activity that decreases the incidence and prevalence of STDs in a population will decrease the prevalence of this key cofactor and should therefore decrease HIV transmission. Thus, health-care providers could prevent HIV transmission not just by treating STDs among persons with HIV infection, but also by treating and preventing STDs among any persons at risk for STDs. Other strategies to help achieve these goals are improving access to and quality of STD clinical services, expanding screening and treatment for STDs in medical settings, and establishing or expanding screening for STDs in nonmedical settings.

Initial steps for improving sexually transmitted disease (STD) detection and treatment to prevent human immunodeficiency virus (HIV) transmission

1. Assess and ensure timely access to high-quality STD clinical care for persons seeking medical services for symptoms of STDs in private and public medical-care settings.
2. Screen for asymptomatic or unrecognized STD infections in medical-care settings according to current guidelines, and expand screening as needed based on prevalence of infections detected in pilot screening efforts.
3. Establish or expand STD screening in nonmedical settings where persons at high risk for HIV infection and curable STDs are encountered and can be treated efficiently, including jails and other correctional facilities, substance abuse treatment centers, and hospital emergency departments.
4. Provide cross-training to program and management staff, including HIV prevention community planning groups, on the role of STD detection and treatment in HIV prevention.

Enhanced Screening for STDs in Medical Settings

- All sexually active females aged less than 25 years visiting health-care providers for any reason should be screened for chlamydia and gonorrhea at least once per year.

- All young, sexually active men should be screened routinely for chlamydial and gonococcal infections. Health-care settings in which this screening can occur are emergency departments, walk-in clinics, community and migrant-worker health centers, clinics for adolescents, school-based clinics, clinics in correctional facilities, and primary-care provider offices (during routine physical examinations). Adolescent and young MSM particularly are at high risk for HIV infection and other STDs and constitute a critically important population for routine STD screening.
- In addition to routinely screening adolescents and young adults, clinicians also should provide chlamydia and gonorrhea screening at least once per year to older, higher-risk males and females visiting health-care providers for any reason. Examples of higher-risk persons are those who abuse substances, persons with a history of STDs or more than one sex partner per year, those in correctional facilities, and persons from communities with high rates of STDs.
- Serologic screening for syphilis should be conducted in high-risk persons (e.g., those with multiple sex partners or who have exchanged sex for money or drugs, persons admitted to jails, and users of illicit drugs).
- Persons already infected with HIV should be screened routinely for STDs.
- Specifically, all HIV-infected persons who might be at risk for STD acquisition should be screened regularly for curable STDs, including gonorrhea, chlamydial infection, syphilis, and -- among women -- trichomoniasis.

Recommendations for STD screening in nonmedical settings:

- Persons entering correctional and detention facilities should be screened for syphilis, gonorrhea, and chlamydia. When possible, females also should be screened for trichomoniasis and bacterial vaginosis.
- Adolescents should be screened for gonorrhea and chlamydia in institutions that serve them, including schools, community-based programs for at-risk populations, and employment/training (e.g., Job Corps), sports, and summer youth programs.
- High-risk persons in street settings should be screened for gonorrhea, chlamydia, and syphilis whenever feasible during community outreach programs designed to prevent HIV infection.

Improving and Using Surveillance for STD V Prevention

Improved quality, completeness, and timeliness of STD surveillance can provide critical information to target early STD detection and treatment and prevention strategies. Expanded early detection of STDs within a jurisdiction should lead to more complete STD surveillance data, which could be an important element of the epidemiologic profile used by prevention community planning groups.



COUNTY OF LOS ANGELES
Public Health

Sexually Transmitted Disease Program

2615 South Grand Avenue, Room 500
Los Angeles, CA 90007
Tel: (213) 744-3070 Fax: (213) 749-9606

<http://publichealth.lacounty.gov/std>