

Briefing to Begin at 2:00pm



[covid19.lacounty.gov](https://covid19.lacounty.gov)

*2/10/2022*

## Past Week Status

	Th 2/10	W 2/9	Tu 2/8	M 2/7	Su 2/6	Sa 2/5	F 2/4
Daily new cases	6,276	5,100	4,198	4,360*	7,017*	9,997	15,427
Daily deaths	81	103	51	29*	65*	84	85
Daily hospitalizations of confirmed cases	2,464	2,597	2,702	2,773	2,841	3,012	3,233
Daily Positivity Rate** (7-day avg)	4.7%	4.6%	4.6%	4.9%	5.4%	5.6%	5.9%
Daily Case Rate** (7-day avg)	74	81	95	102	111	125	142



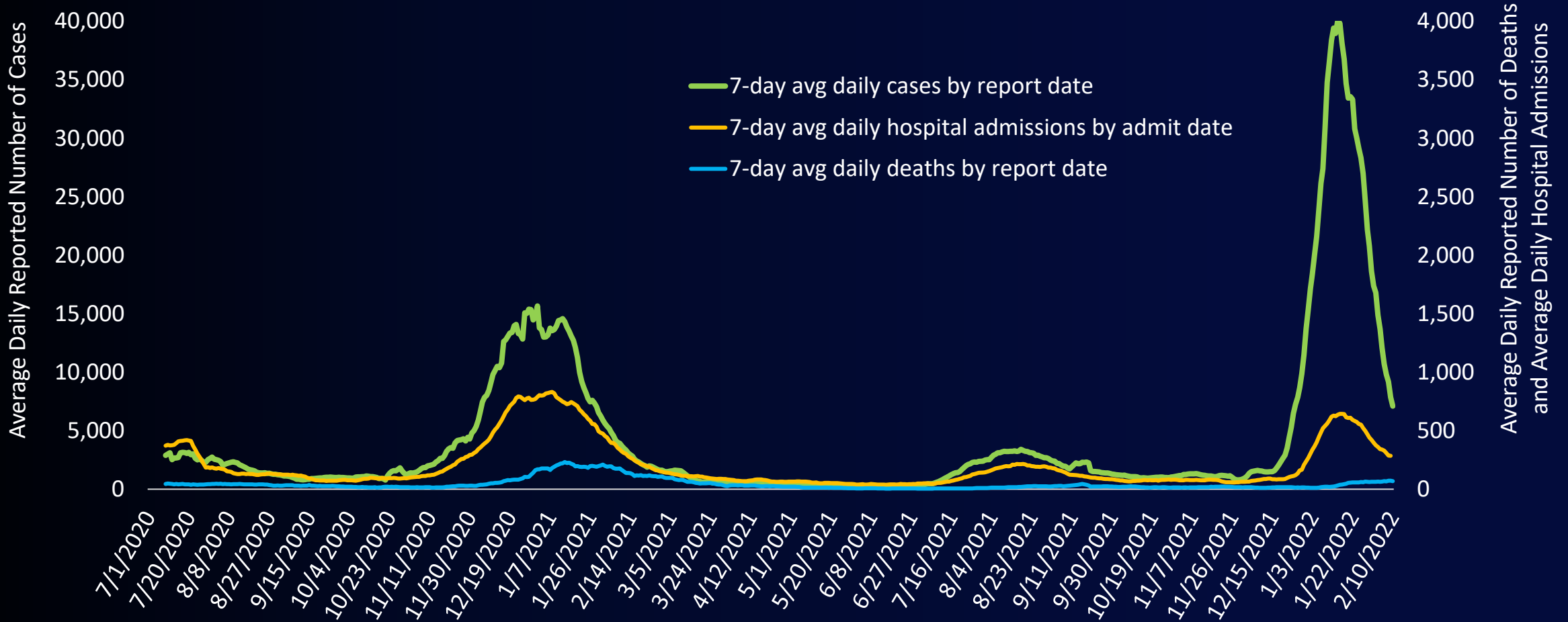
[covid19.lacounty.gov](https://covid19.lacounty.gov)

2/10/2022

\*Number reflects an undercount due to a lag from weekend reporting.

\*\*Daily case rates and daily positivity rates do not include data from Long Beach and Pasadena

# 7-Day Average Daily COVID-19 Cases and Deaths by Report Date\* and Daily Hospital Admissions by Admit Date July 1, 2020 – February 10, 2022

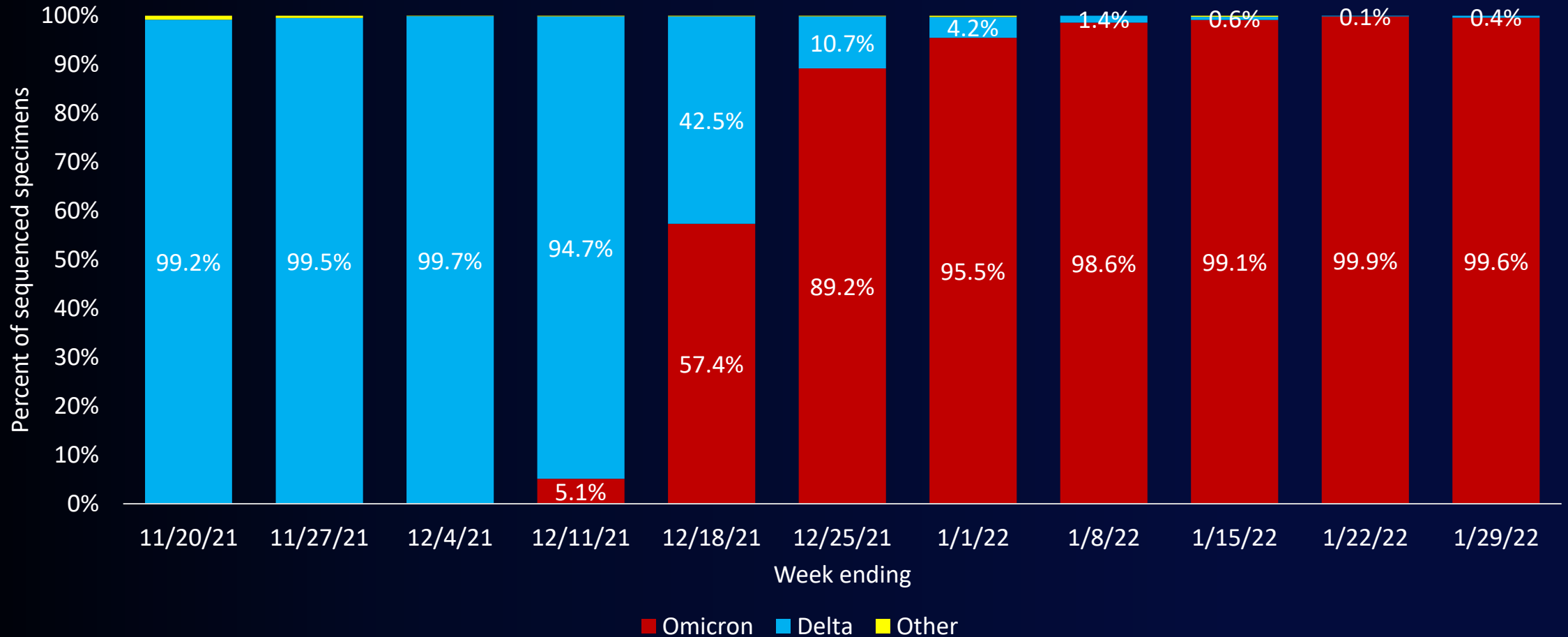


[covid19.lacounty.gov](https://covid19.lacounty.gov)

2/10/2022

\*Cases and deaths from the cities of Pasadena and Long Beach are NOT included

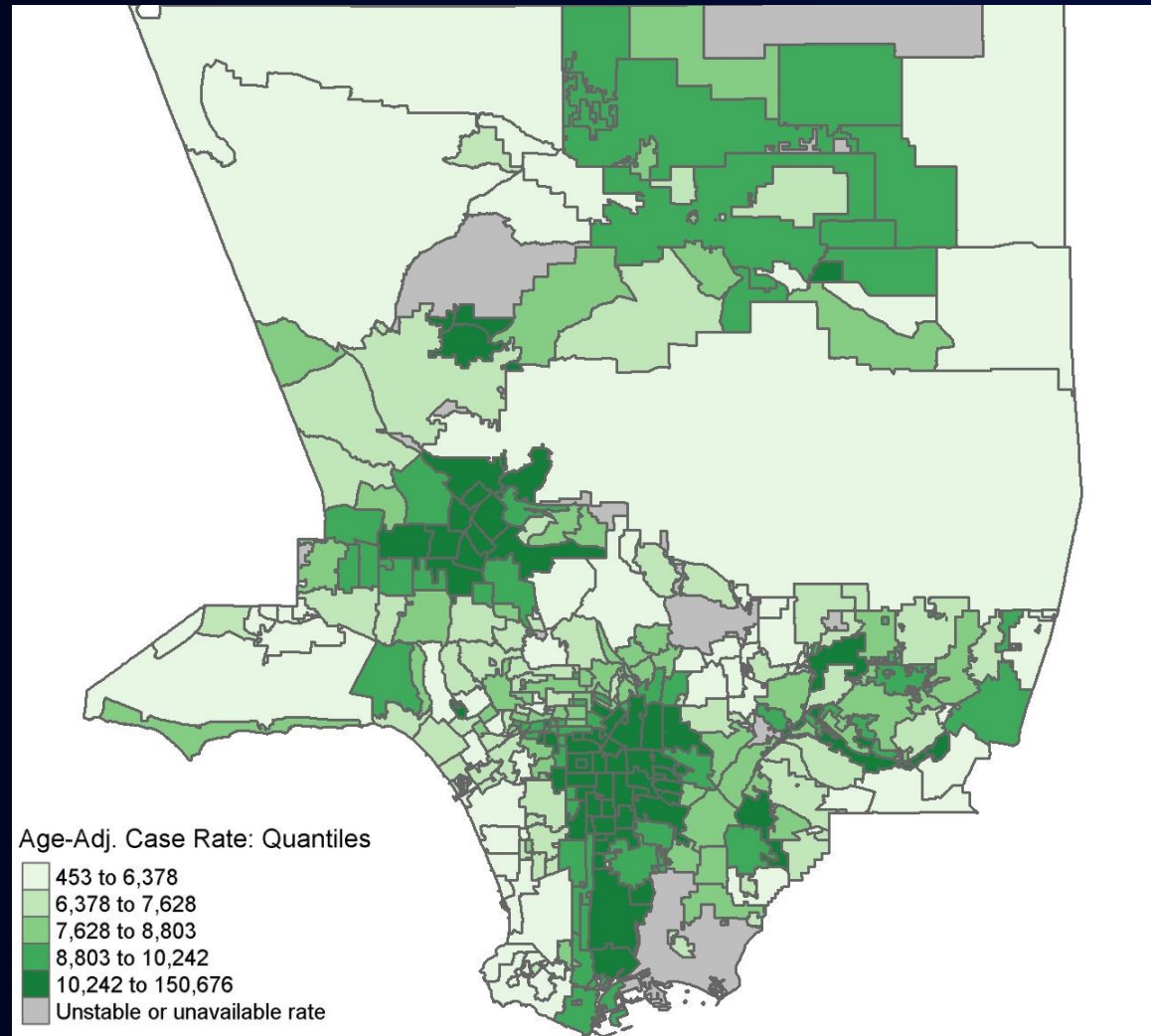
# Delta and Omicron Variants as a Percentage of All Specimens Sequenced for Baseline Variant Surveillance



[covid19.lacounty.gov](https://www.covid19.lacounty.gov)

2/10/2022

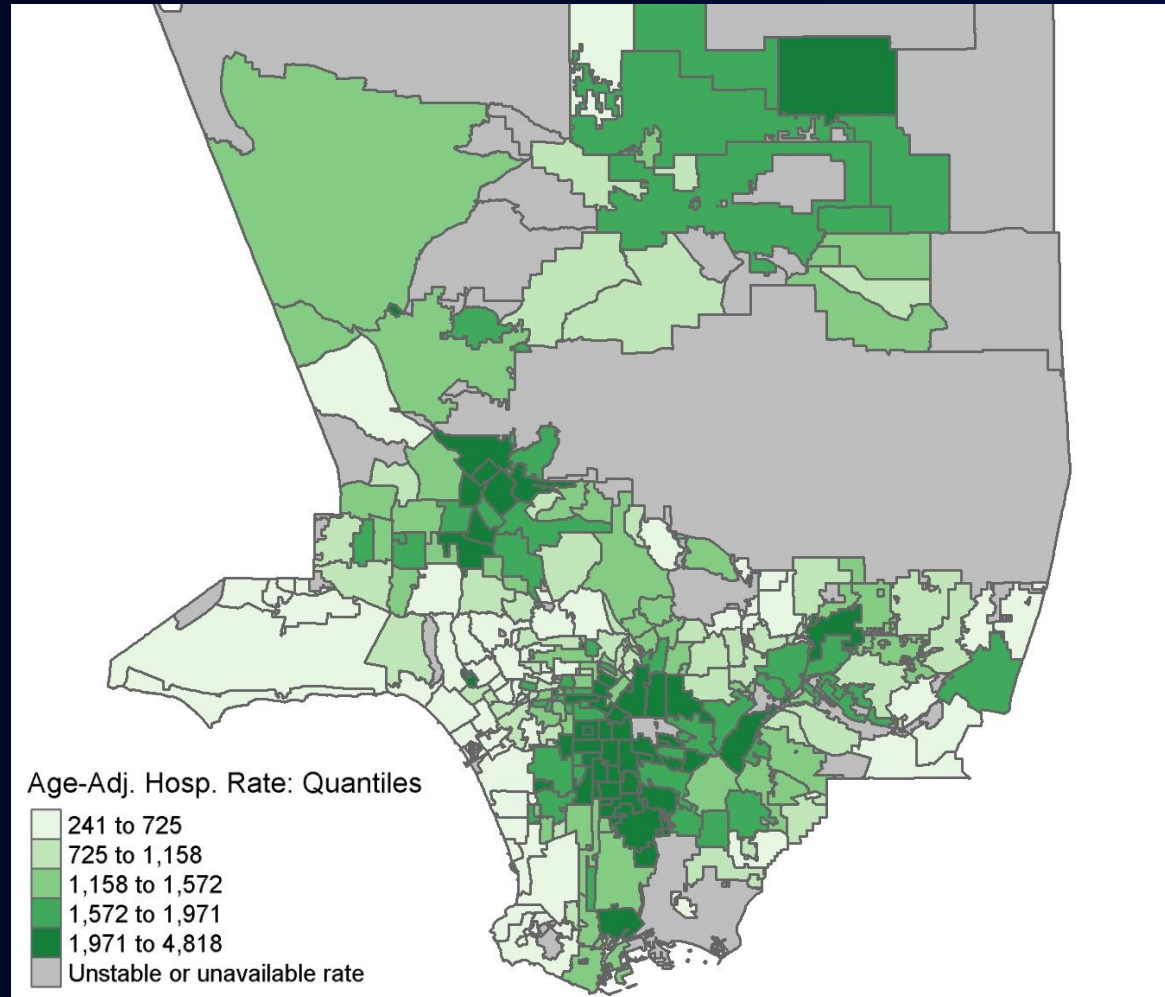
# Age-Adjusted Covid-19 Case Rates by City/Community: January 2022



[covid19.lacounty.gov](https://covid19.lacounty.gov)

2/10/2022

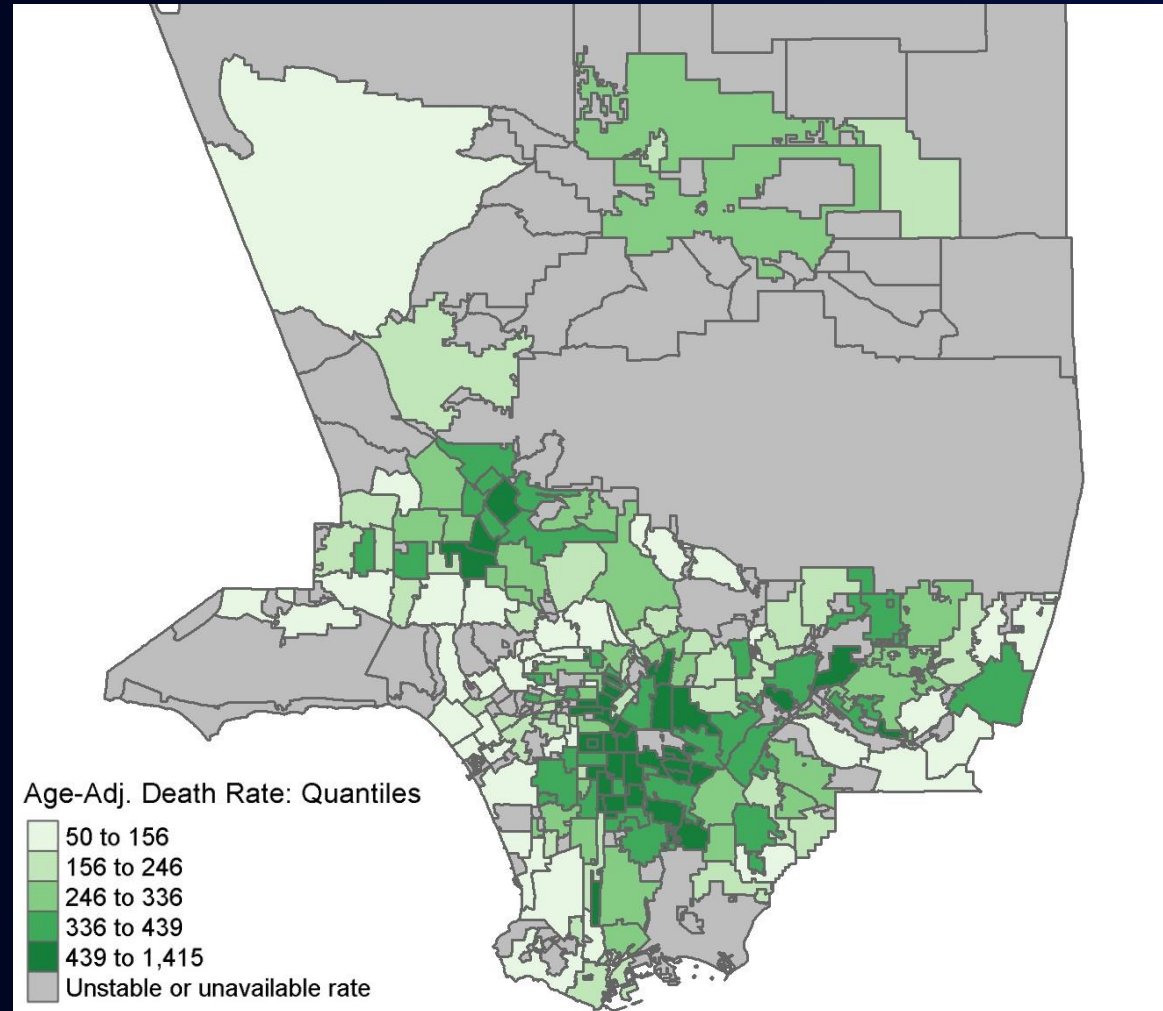
# Age-Adjusted Covid-19 Hospitalization Rates by City/Community: Cumulative



[covid19.lacounty.gov](https://covid19.lacounty.gov)

2/10/2022

# Age-Adjusted Covid-19 Death Rates by City/Community: Cumulative



[covid19.lacounty.gov](https://covid19.lacounty.gov)

2/10/2022

# Why Do We See Geographic Variation in Outcomes?

## Contributing Factors

- Population density
- Type of dwelling (single family home/apartment/condo etc.)
- Household composition (number of people in household and age composition)
- Employment type and risk of exposure at employment
- Vaccination rates
- Access to and use of testing
- Access to medical care
- Age distribution and prevalence of underlying medical conditions
- Racial and ethnic disparities in access to health affirming resources
- Historically marginalized communities





# Proportion of LAC Residents Vaccinated by Age Group as of February 6, 2022

	<b>≥1 Dose</b>	<b>Fully Vaccinated</b>	<b>Vaccinated with Additional/Booster Dose</b>
<b>% LAC Residents 65+</b>	99%	90%	61%
<b>% LAC Residents 5-11</b>	33%	25%	<0.0%
<b>% LAC Residents 12-17</b>	84%	75%	18%
<b>% LAC Residents 12+</b>	87%	78%	39%
<b>% LAC Residents 5+</b>	82%	73%	35%
<b>% of 10.3 million LAC residents</b>	78%	70%	33%

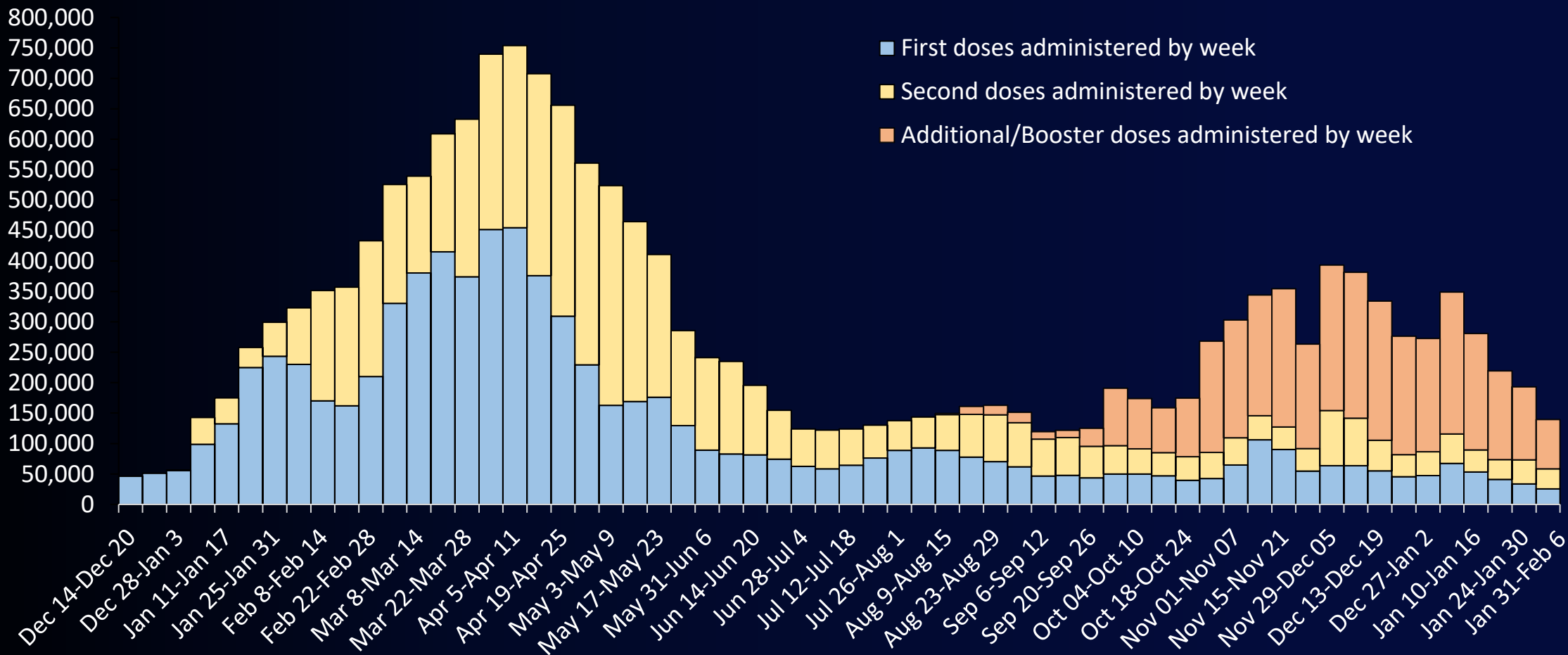
3,400,617 LAC residents have received additional/booster doses



[covid19.lacounty.gov](https://covid19.lacounty.gov)

2/10/2022

# Vaccine Doses Administered Weekly Among All Eligible Persons



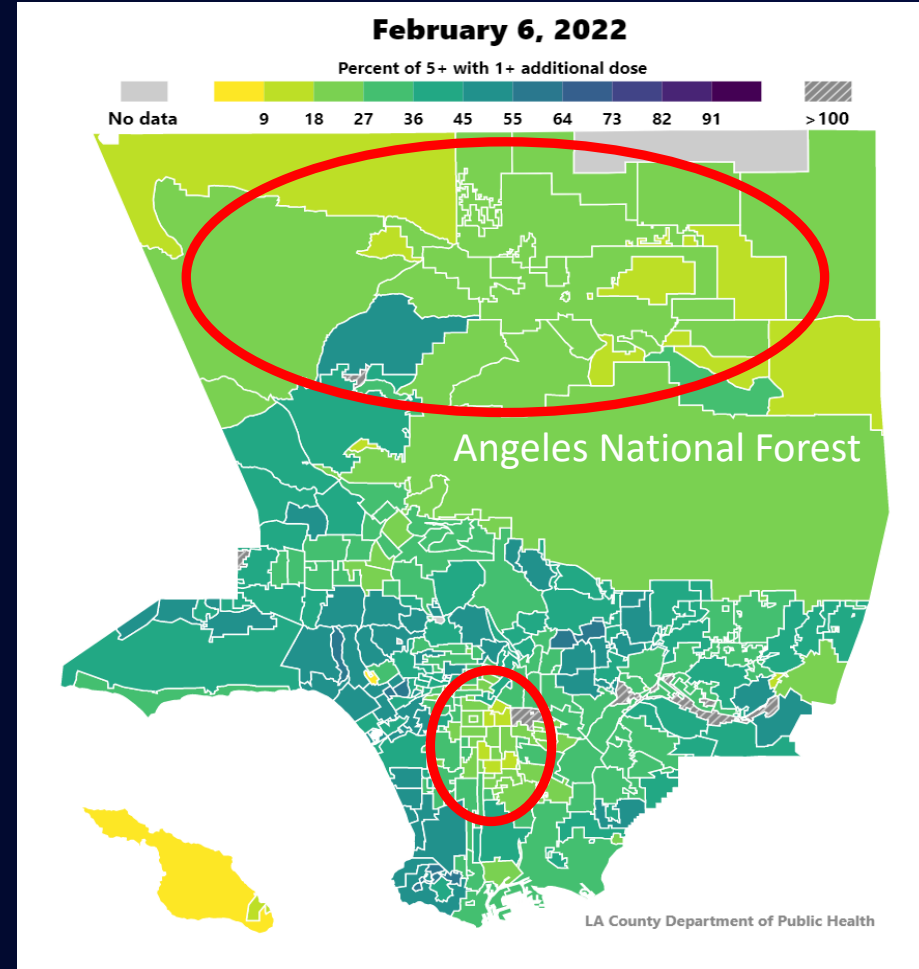
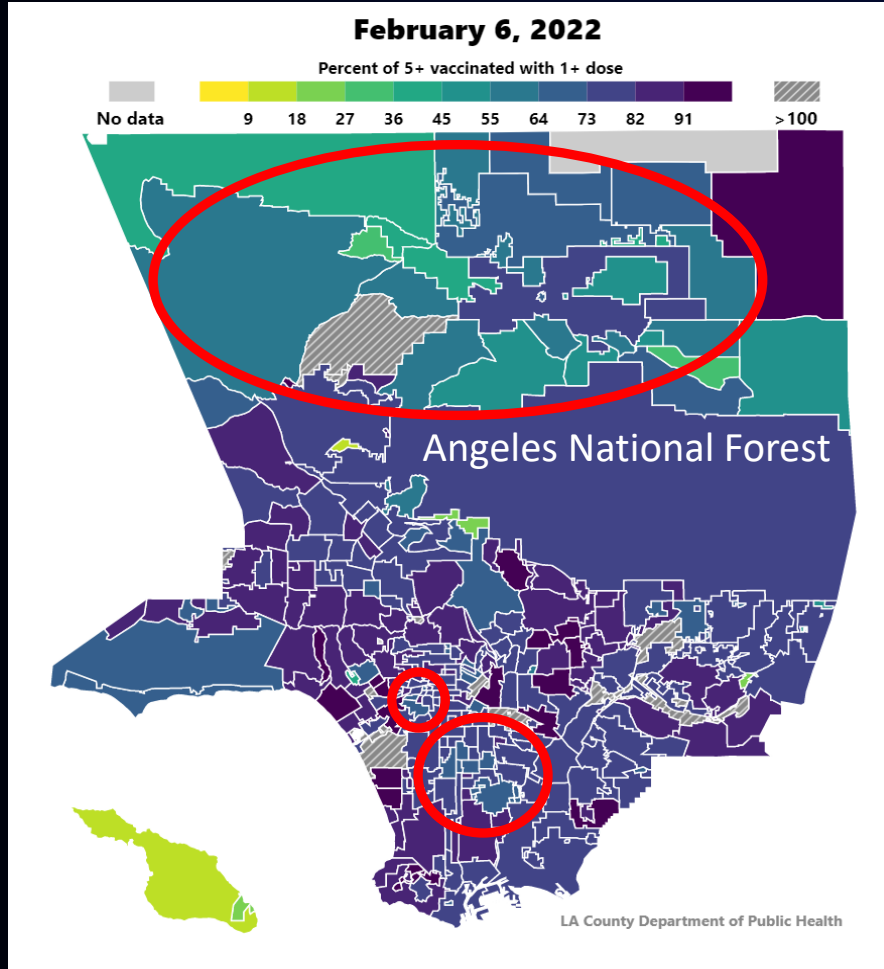
[covid19.lacounty.gov](https://www.covid19.lacounty.gov)

2/10/2022

# Vaccination and Booster Gaps by Geography

LAC Residents 5+ Years with 1+ Dose

LAC Residents 5+ Years with Additional/Booster Dose



Dark Purple and Dark Blue = High Vaccination Coverage    Yellow and Light Green = Low Vaccination Coverage

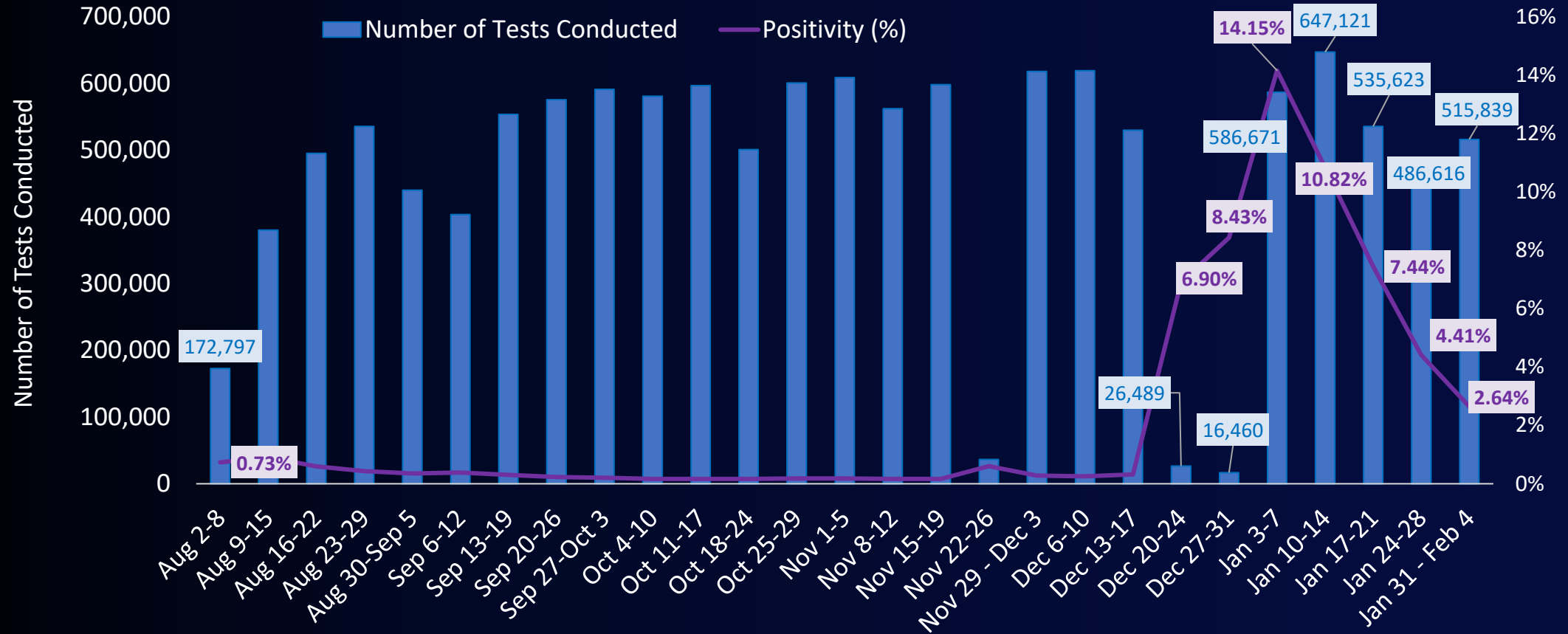


[covid19.lacounty.gov](https://www.covid19.lacounty.gov)

2/10/2022

# School Testing Volume and Test Positivity

## August 2, 2021 – February 4, 2022\*



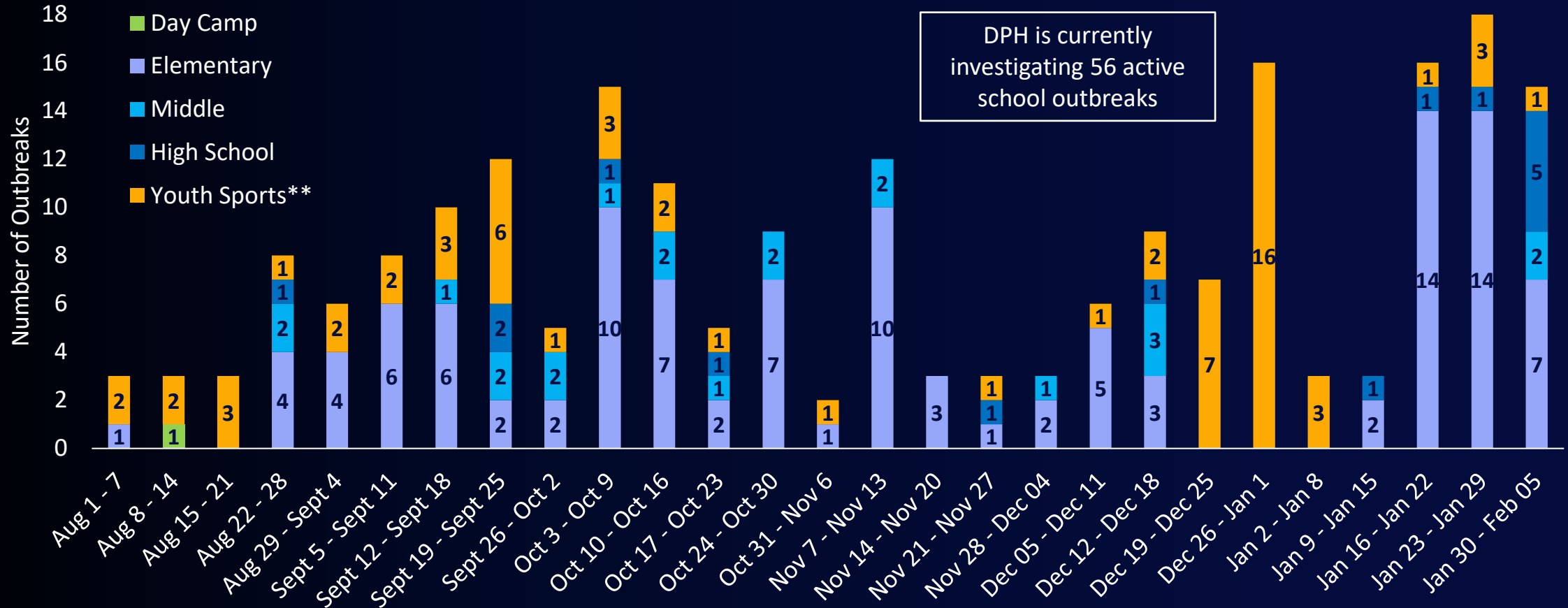
\*Most school tests are among asymptomatic, exposed persons as part of weekly screening testing, but could include ad-hoc response testing among symptomatic or exposed persons. School testing data may include repeat tests for a unique individual. Test types reported by schools include PCR, rapid antigen, and over-the-counter tests. For the weeks of Nov 22, 2021, and December 20, 2021 – January 2, 2022, testing volume decrease was due to districts/schools being closed for holiday breaks.



[covid19.lacounty.gov](https://covid19.lacounty.gov)

2/10/2022

# Outbreaks in TK-12 Schools and Programs August 1, 2021 – February 5, 2022\*

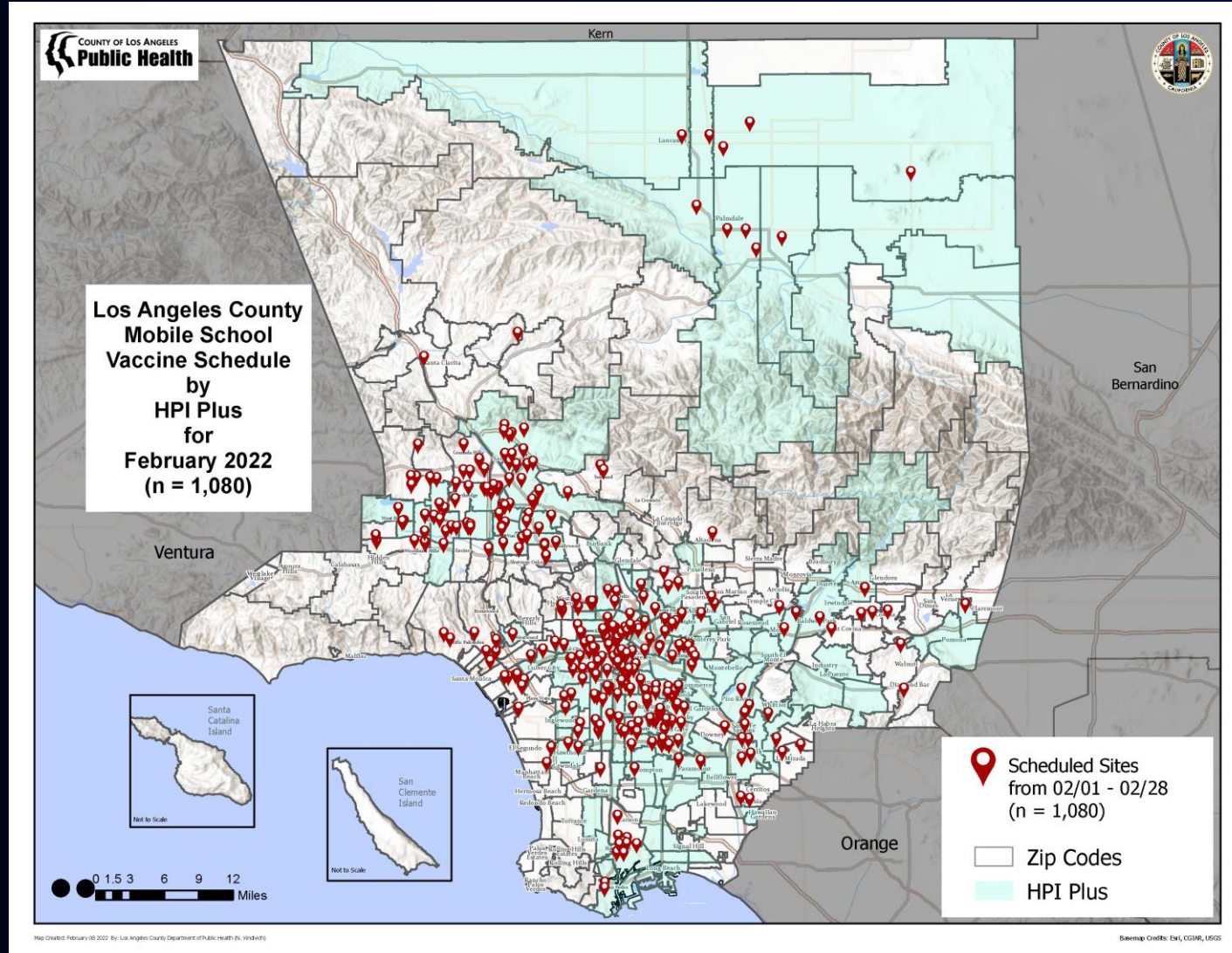


\*Outbreaks are reported by the date the outbreak investigation was opened. Outbreaks may still be open and under investigation

\*\* All but one of the Youth Sports Outbreaks have been in a high-school setting.



# Mobile School Vaccine Schedule by HPI Plus for February 2022



[covid19.lacounty.gov](https://covid19.lacounty.gov)

2/10/2022

# Post-Surge Masking Requirements

*Post Surge Trigger: COVID-19 Hospitalizations Drop Below 2,500 for 7 consecutive days*

## Scenarios where Masking will not be Required Post-Surge

- |  |   |
|--|---|
| <ul style="list-style-type: none"><li>• In Outdoor Spaces at Outdoor Mega Events</li></ul> | <ul style="list-style-type: none"><li>• In Outdoor Spaces at Childcare and K-12 Schools</li></ul> |
|--|---|

## Scenarios where Masking will be Required Post-Surge

- |  |  |
|--|--|
| <ul style="list-style-type: none"><li>• At indoor establishments (e.g., indoor offices, worksites, and events) until:<ul style="list-style-type: none"><li>○ LA County has 2 consecutive weeks at or below Moderate Transmission (CDC-defined) <b>OR</b></li><li>○ Vaccines have been available for children under age 5 for 8 weeks; <b>AND</b></li><li>○ There are no emerging reports of significantly circulating new variants of concern that threaten vaccine effectiveness.</li></ul></li></ul> | <ul style="list-style-type: none"><li>• Indoors at TK-12 schools, childcare, and youth settings; healthcare settings; correctional facilities; homeless and emergency shelters; and cooling centers, as required by State regulations.</li><li>• When riding public transit and in transportation hubs as required by federal regulations.</li></ul> |
|--|--|

## Additional Masking Requirements and Recommendations

*In Place until Community Transmission is Low for 2 Consecutive Weeks*

- |  |   |
|--|---|
| <ul style="list-style-type: none"><li>• Employers must provide high quality and well-fitting masks to workers in close contact with others. Once LAC is at moderate transmission, masking is optional for employees.</li></ul> | <ul style="list-style-type: none"><li>• Masking will be recommended when in close contact with others in indoor or in outdoor crowded spaces.</li></ul> |
|--|---|



# Post-Surge Vaccination Verification Requirements

---

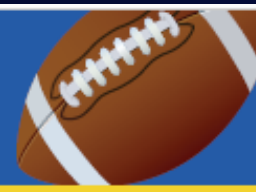
Vaccination verification requirements are likely to continue at the following higher risk venues until LA County reaches low transmission for 2 consecutive weeks:

---

- **Outdoor Mega Events and Indoor Mega Events:** Attendees must continue to verify that they're fully vaccinated or have a negative test result (within 48 hours for PCR tests or 24 hours for antigen tests).
- **Indoor Portions of Bars, Lounges, Nightclubs, Wineries, Breweries, and Distilleries:** Patrons must continue to verify that they are fully vaccinated.







## **Tips for Enjoying a COVID-Safe Super Bowl: At the Game, Pre-Game Event, or Gathering**

- Get vaccinated or boosted before the game.
- Get a COVID-19 test as close to the start of the game as possible and after the game if you had possible exposures.
- If you're ill or have a positive COVID-19 test, skip the game or in-person party. Join a party virtually.
- If you're hosting a gathering, keep it small and outdoors. If that's not an option, improve indoor air flow.
- Keep your hands clean and keep your distance while eating.
- Wear a well-fitted high-quality mask.
  - Follow masking requirements for indoor establishments and outdoor mega events.
  - If you're indoors, wear a more protective mask or a well-fitting respirator if at higher risk for COVID-19.
- Follow all Game Day Health and Safety Protocols at SoFi Stadium and Super Bowl events.

