

# Surveillance of Enteric Parasites in LA County

Susie Tang, MPH

Acute Communicable Disease Control



# Today's Topics

- Surveillance procedures
- Common risk factors, control measures
- Case investigations, household contacts
- Epidemiology of enteric parasites
- Outbreak investigations
- Q & A



# Surveillance Procedures



- Notification and reporting
- Laboratory culture and confirmation
- Public health investigation
  - New case history form is on ACDC website



# Risk Factors & Control Measures

- Poor personal hygiene
  - Emphasize hand-washing, proper disposal of feces
- Risky sexual activities
  - Abstain while sick, always use barrier methods
- Colonic irrigation or hydrotherapy
  - Advise of risks of this procedure



# Risk Factors & Control Measures

- Foreign travel
  - Boil drinking water, wash fruits and vegetables thoroughly
- Recreational water
  - Don't swim when sick, don't swallow pool water
- Household pets
  - Proper disposal of pet waste



# Sensitive Occupation or Situations

- Amoebiasis
  - Remove food handlers from work, collect 3 stool specimens for clearance
- Cryptosporidiosis
  - Restrict based on case's hygiene, severity of symptoms
- Giardiasis
  - Remove cases from work or day care until under treatment and symptoms resolve

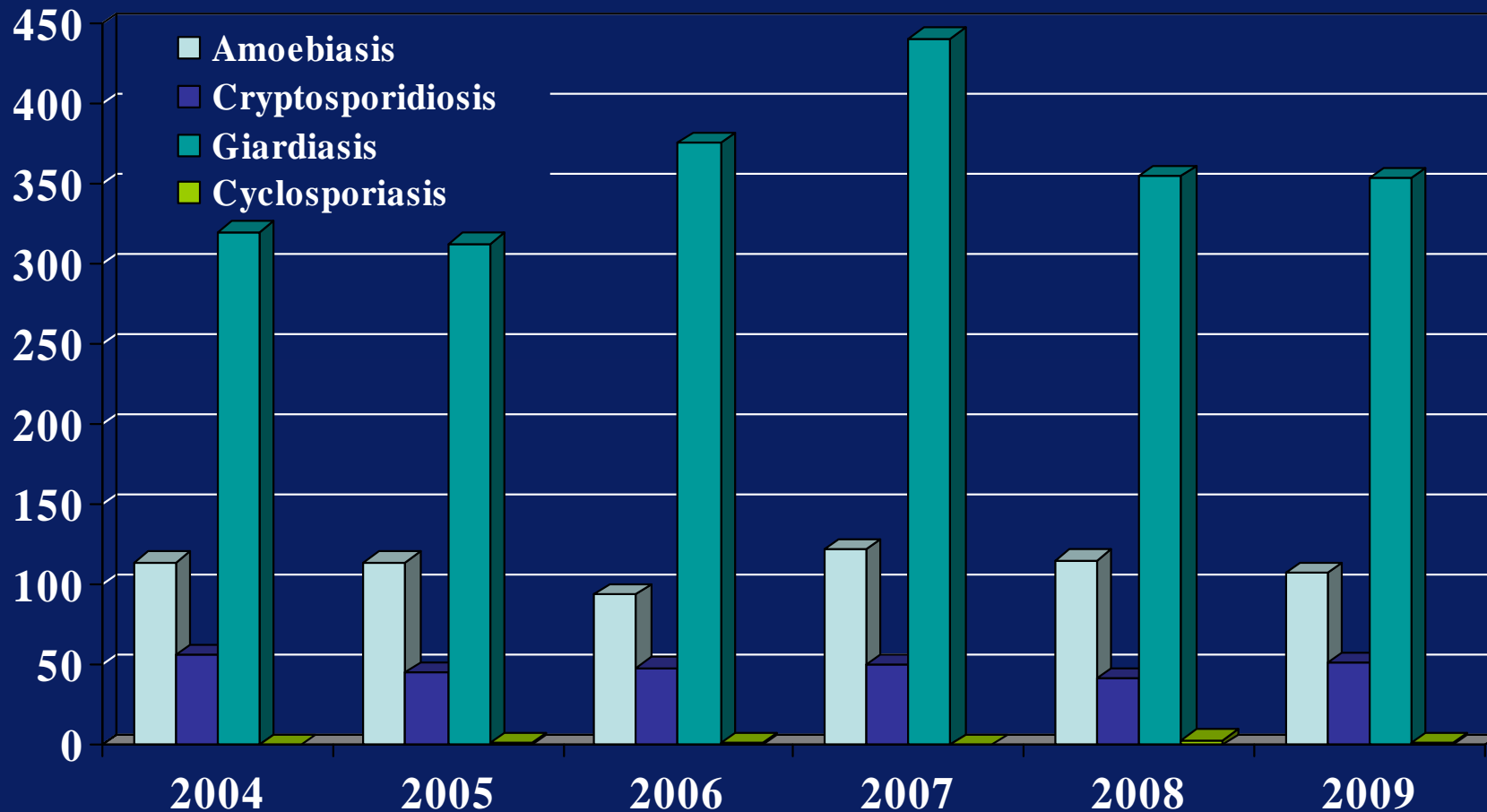


# Household Contacts

- Screen household contacts only if symptomatic
  - If stool specimen is positive, then treat as a case

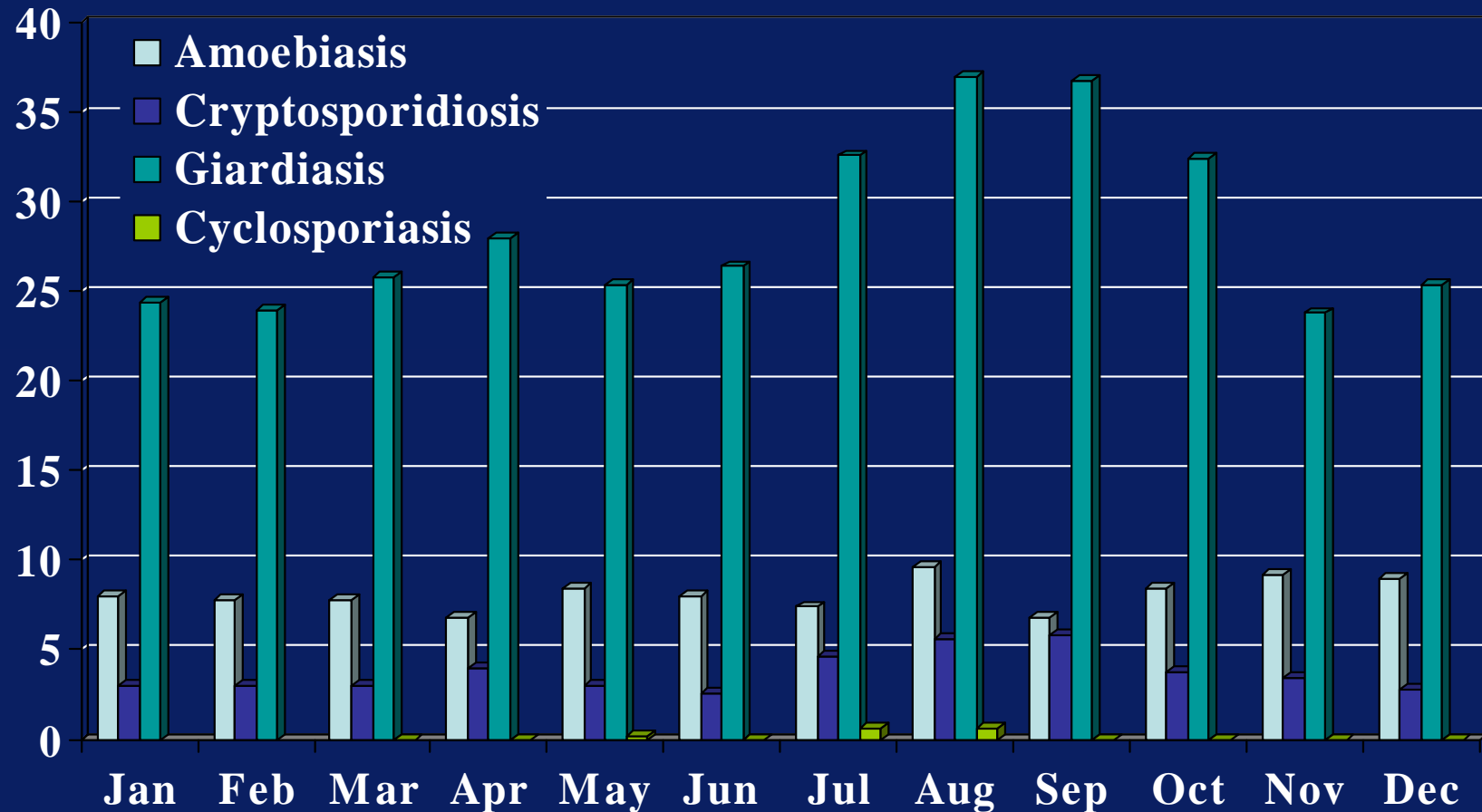


# # Parasite Cases Reported by Year





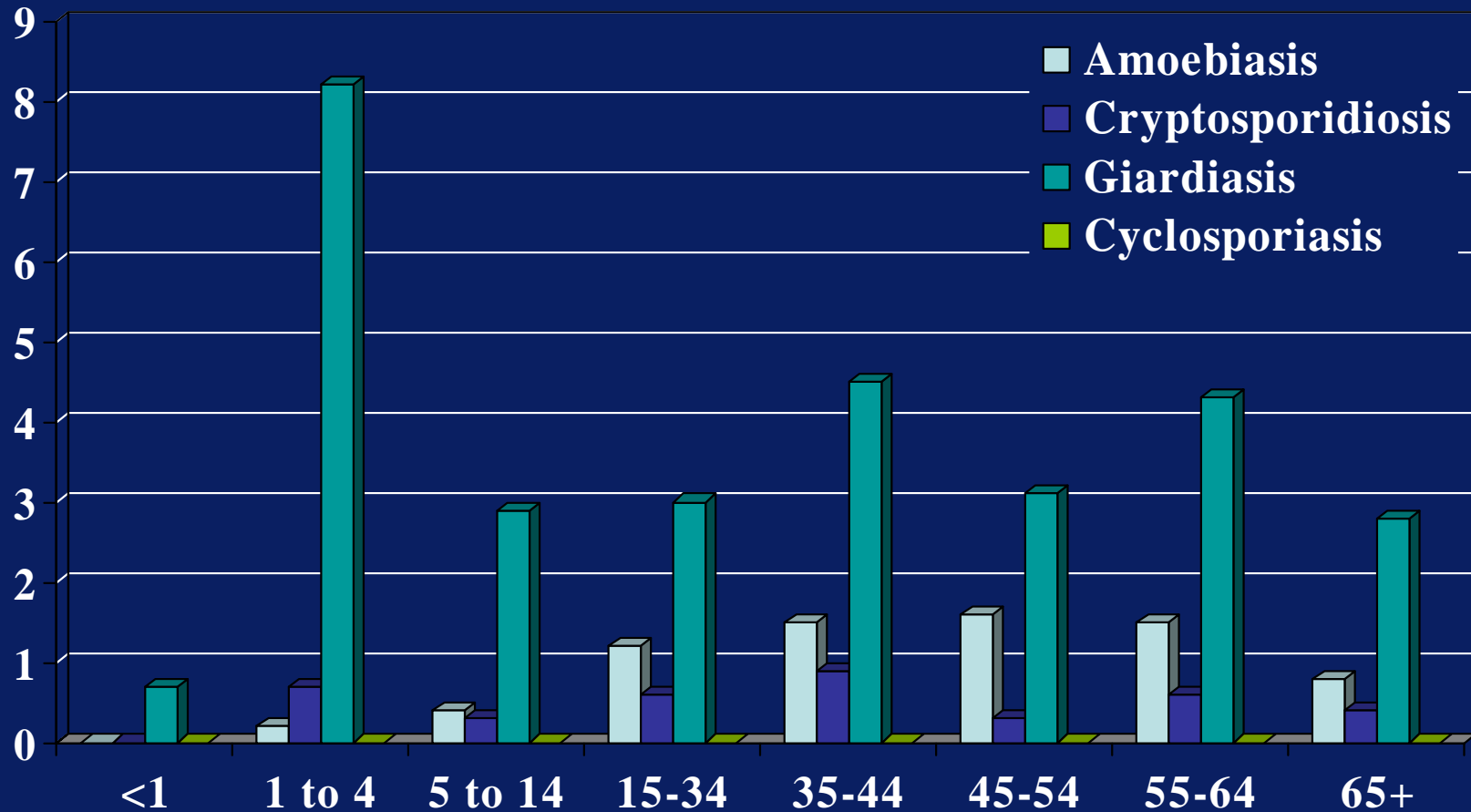
# Parasite Cases by Month of Onset



\*Number of cases are based on a 5-yr average, 2005-2009



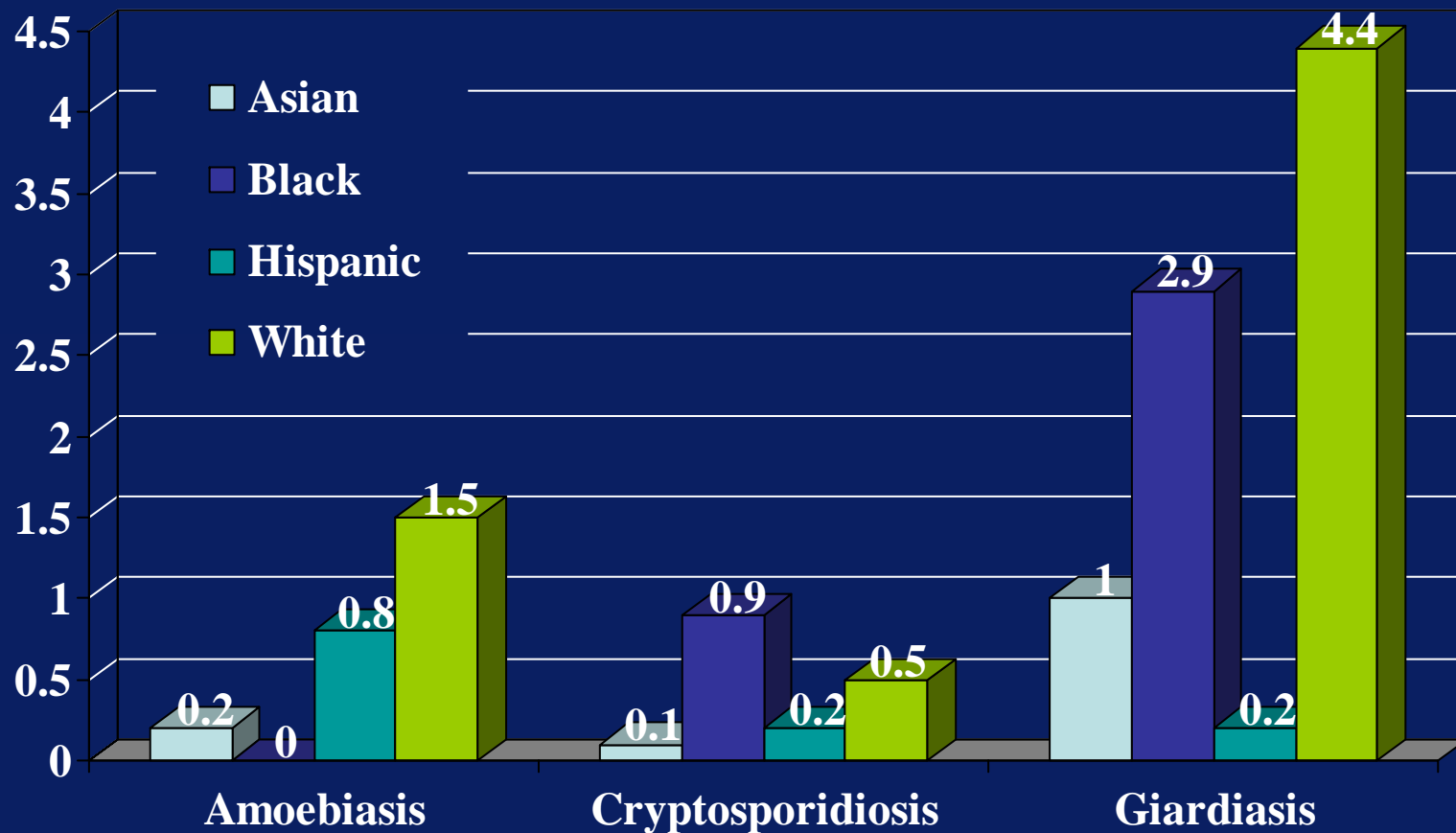
# 2009 Parasite Incidence by Age



\*Rates of disease are calculated per 100,000 population

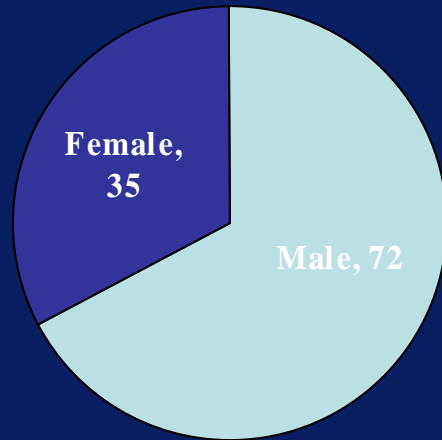


# 2009 Parasite Incidence by Race

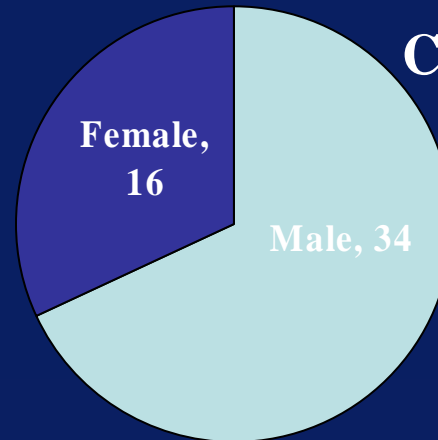


# 2009 Parasite Cases by Sex

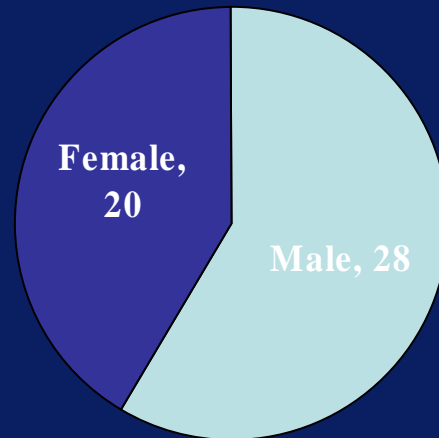
## Amoebiasis



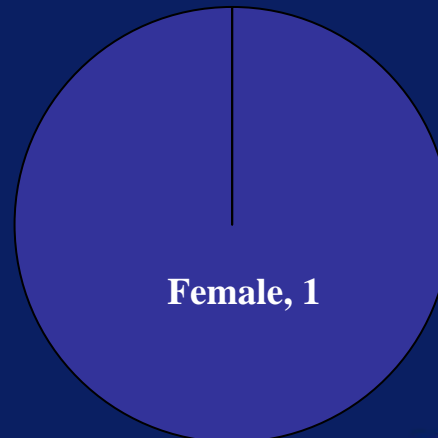
## Cryptosporidiosis



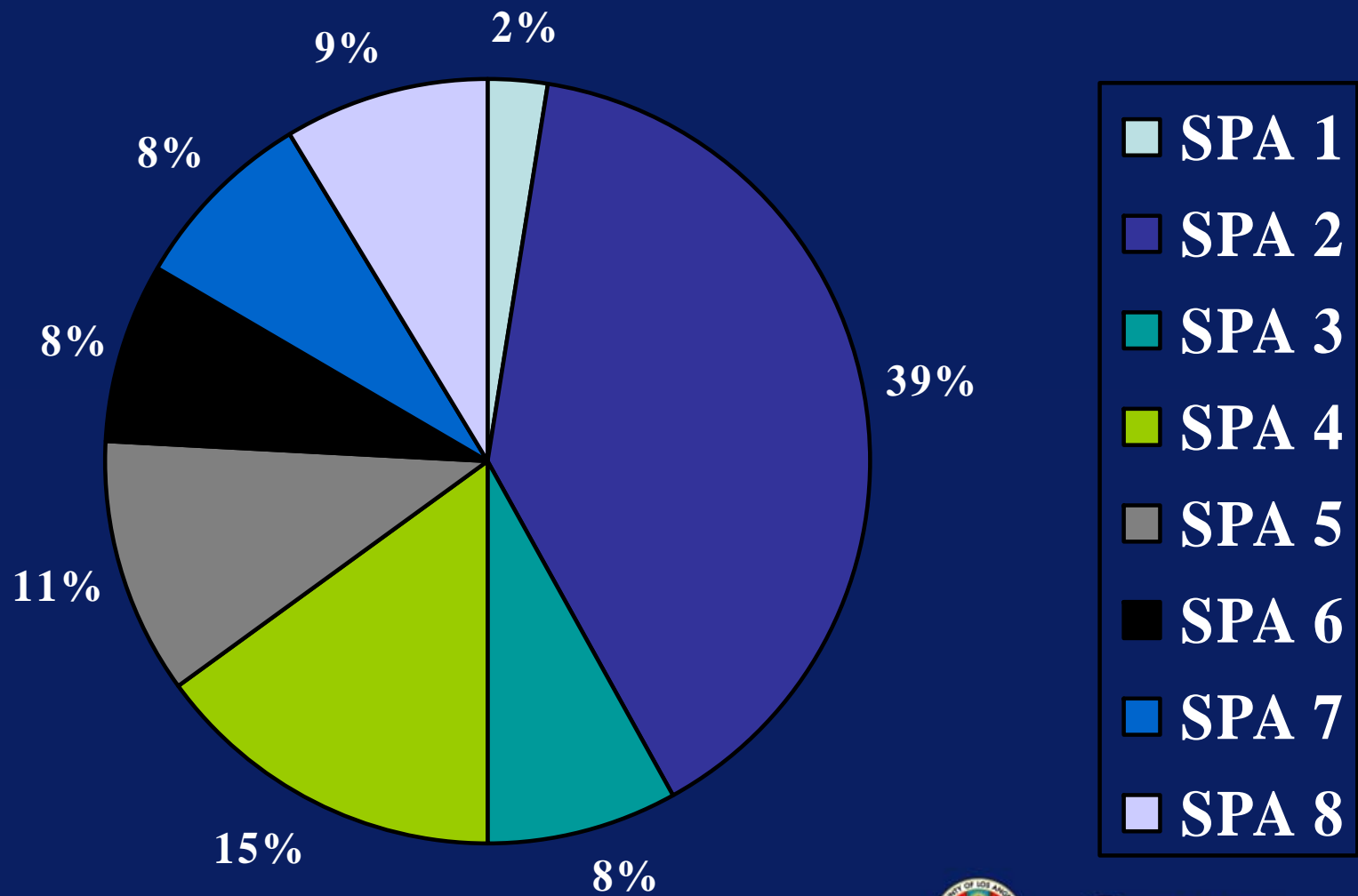
## Giardiasis



## Cyclosporiasis

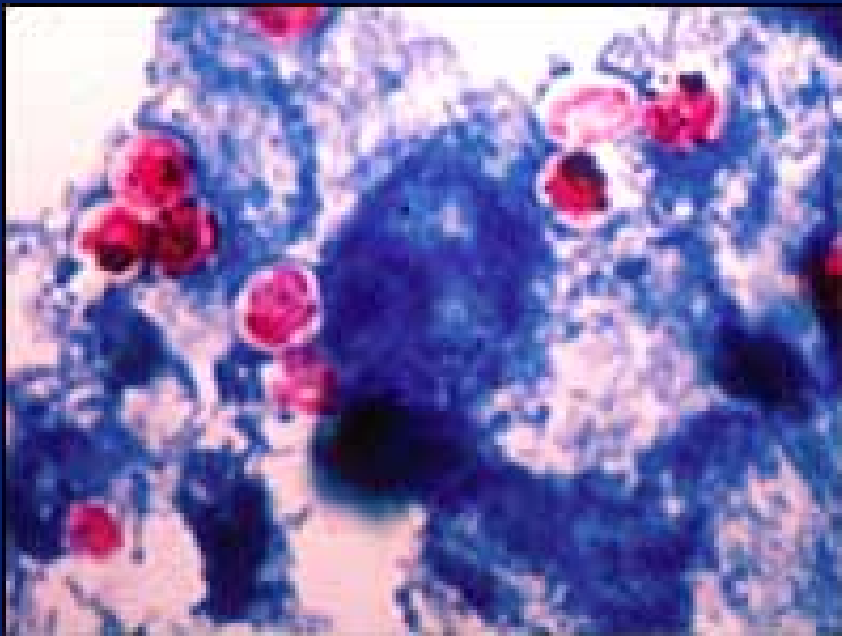


# 2009 Parasite Cases by SPA



# Parasite Outbreaks in LA County

- Cryptosporidiosis outbreak 1988
- Giardiasis outbreak 2005



# Questions?

