



# INFLUENZA WATCH LOS ANGELES COUNTY

## Los Angeles County (LAC) Starting this week, Influenza Watch will be published every 2 weeks.

Respiratory activity, including influenza and RSV, decreased during week 12. Two additional severe pediatric influenza cases were reported this week but occurred earlier in March for a total of 7 children who were admitted to the ICU with influenza this season. We suspect that this may be an underestimate of the total number of children that have been severely affected by flu this year.

### Surveillance System Overview

SURVEILLANCE SYSTEM*	Week 12	2008-2009 YTD
Percent Positive Influenza Tests <sup>±</sup>	5.0	5.1
Percent Positive RSV Tests <sup>‡</sup>	4.6	17.9
Percent Flu A / Flu B <sup>±</sup>	65 / 35	83 / 17
Severe Pediatric Influenza Cases <sup>†</sup>	0	7 (0)
Respiratory Outbreaks	0	7
Influenza Vaccines Administered (PH)	--	62,056

\*See <http://lapublichealth.org/acd/flu.htm> for a description of surveillance methods.

± Sentinel sites (9 participating facilities).

‡ Sentinel sites (4 participating facilities).

†The number of deaths is indicated by the parenthesis.

### California

During week 11 (March 15-March 21) influenza activity in California was upgraded to **widespread** due to increased hospitalizations and lab detections in Central California. However, antiviral prescriptions continued to decrease throughout California.

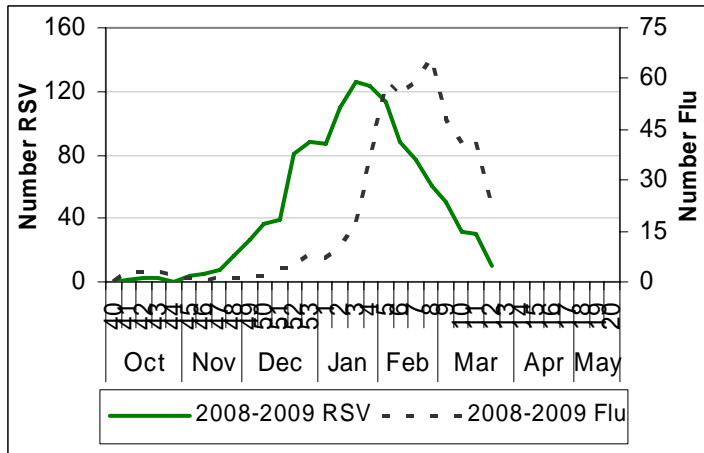
<http://www.cdph.ca.gov/PROGRAMS/VRDL/Pages/CaliforniaInfluenzaSurveillanceProject.aspx>

### United States

Nationally, influenza activity continued to decrease during week 11. During this week, 24 states reported **widespread** activity, 19 states reported **regional** activity, 6 states reported **local** activity, and 1 state reported sporadic activity. Influenza activity is lower compared to the same week last year when 32 states reported widespread activity.

<http://www.cdc.gov/flu/weekly/fluactivity.htm>

Figure 1: Positive Influenza and RSV Tests by Week



RSV data in Figure 1 represent testing completed in four reporting facilities for the 2008-2009 season. Influenza data represent testing completed in nine facilities.

Figure 2: Percent of ED Visits for ILI by Week

